

SWT1 antibody

Product Information

Catalog No.:	FNab01063
Size:	100µg
Form:	liquid
Purification:	Immunogen affinity purified
Purity:	≥95% as determined by SDS-PAGE
Host:	Rabbit
Clonality:	polyclonal
Clone ID:	None
IsoType:	IgG
Storage:	PBS with 0.02% sodium azide and 50% glycerol pH 7.3, -20°C for 12 months(Avoid repeated freeze / thaw cycles.)

Background

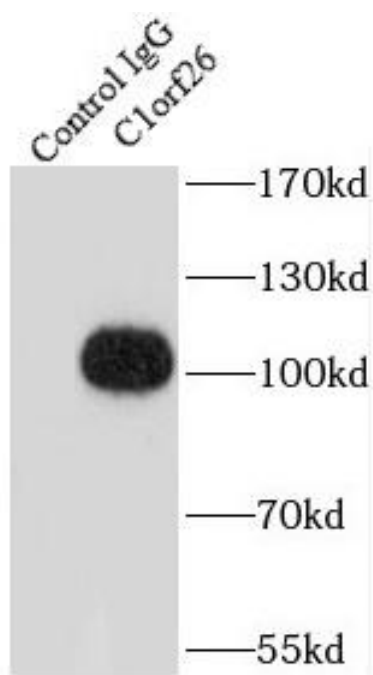
None

Immunogen information

Immunogen:	chromosome 1 open reading frame 26
Synonyms:	Transcriptional protein SWT1 SWT1 C1orf26
Observed MW:	100-105 kDa
Uniprot ID :	Q5T5J6

Application

Reactivity:	Human, Mouse
Tested Application:	ELISA, IP
Recommended dilution:IP:	1:500-1:1000
Image:	



IP Result of anti-C1orf26 (IP:FNab01063, 5ug;
Detection:FNab01063 1:500) with mouse testis
tissue lysate 8000ug.