

C4(alpha chain) antibody

Product Information

Catalog No.:	FNab01111
Size:	100µg
Form:	liquid
Purification:	Immunogen affinity purified
Purity:	≥95% as determined by SDS-PAGE
Host:	Rabbit
Clonality:	polyclonal
Clone ID:	None
IsoType:	IgG
Storage:	PBS with 0.02% sodium azide and 50% glycerol pH 7.3, -20°C for 12 months(Avoid repeated freeze / thaw cycles.)

Background

Complement C4, a component of the classical complement pathway, has an important role in innate immune function. C4 protein is expressed as a single chain precursor which is proteolytically cleaved into a trimer of alpha, beta, and gamma chains (molecular weights 95, 78, and 31 kDa) prior to secretion. The alpha chain is cleaved to release C4 anaphylatoxin, an antimicrobial peptide and a mediator of local inflammation. This antibody can recognize C4 precursor, C4 alpha chain, C4b, and C4d.

Immunogen information

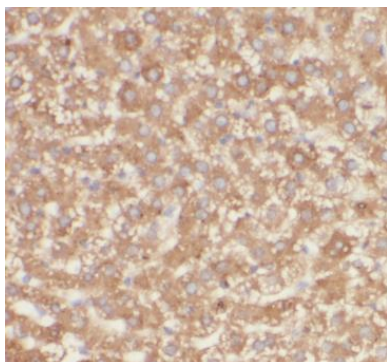
Immunogen:	complement component 4A(Rodgers blood group)
Synonyms:	Complement C4-A Acidic complement C4 C3 and PZP-like alpha-2-macroglobulin domain-containing protein 2 Complement C4 beta chain Complement C4-A alpha chain C4a anaphylatoxin C4b-A C4d-A Complement C4 gamma chain C4A CO4 CPAMD2
Observed MW:	95 kDa
Uniprot ID :	P0C0L4

Application

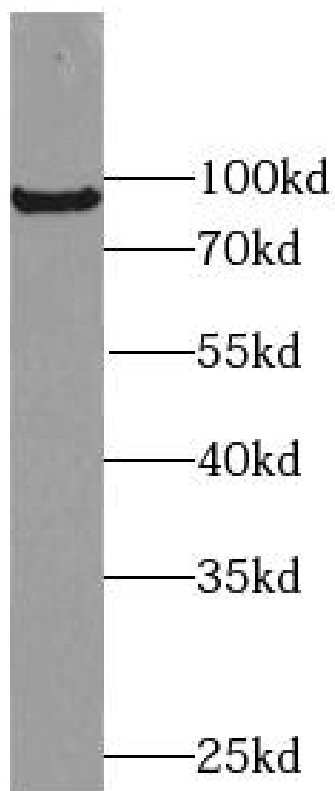
Reactivity:	Human
Tested Application:	ELISA, WB, IHC

Recommended dilution: WB: 1:1000-1:6000; IHC: 1:50-1:500

Image:



Immunohistochemistry of paraffin-embedded human liver tissue slide using FNab01111(C4 (alpha chain) antibody at dilution of 1:200



human blood tissue were subjected to SDS PAGE followed by western blot with FNab01111(C4 (alpha chain) antibody at dilution of 1:3000