

C4BPA antibody

Product Information

Catalog No.:	FNab01113
Size:	100µg
Form:	liquid
Purification:	Immunogen affinity purified
Purity:	≥95% as determined by SDS-PAGE
Host:	Rabbit
Clonality:	polyclonal
Clone ID:	None
IsoType:	IgG
Storage:	PBS with 0.02% sodium azide and 50% glycerol pH 7.3, -20°C for 12 months(Avoid repeated freeze / thaw cycles.)

Background

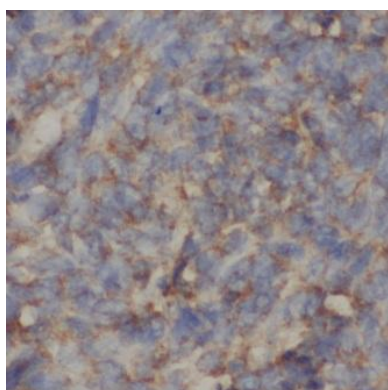
Controls the classical pathway of complement activation. It binds as a cofactor to C3b/C4b inactivator(C3bINA), which then hydrolyzes the complement fragment C4b. It also accelerates the degradation of the C4bC2a complex(C3 convertase) by dissociating the complement fragment C2a. Alpha chain binds C4b. It interacts also with anticoagulant protein S and with serum amyloid P component.

Immunogen information

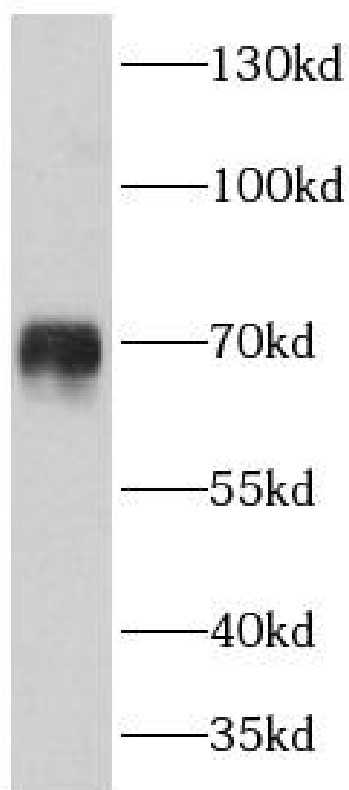
Immunogen:	complement component 4 binding protein, alpha
Synonyms:	C4b-binding protein alpha chain (C4bp) Proline-rich protein (PRP) C4BPA C4BP
Observed MW:	70 kDa
Uniprot ID :	P04003

Application

Reactivity:	Human
Tested Application:	ELISA, WB, IHC
Recommended dilution:	WB: 1:500-1:2000; IHC: 1:20-1:200
Image:	



Immunohistochemistry of paraffin-embedded human liver cancer tissue slide using FNab01113(C4BPA Antibody) at dilution of 1:50



human blood tissue were subjected to SDS PAGE followed by western blot with FNab01113(C4BPA Antibody) at dilution of 1:600