

CADM1 antibody

Product Information

Catalog No.:	FNab01190
Size:	100µg
Form:	liquid
Purification:	Immunogen affinity purified
Purity:	≥95% as determined by SDS-PAGE
Host:	Rabbit
Clonality:	polyclonal
Clone ID:	None
IsoType:	IgG
Storage:	PBS with 0.02% sodium azide and 50% glycerol pH 7.3, -20°C for 12 months(Avoid repeated freeze / thaw cycles.)

Background

Mediates homophilic cell-cell adhesion in a Ca(2+)-independent manner. Also mediates heterophilic cell-cell adhesion with CADM3 and NECTIN3 in a Ca(2+)-independent manner. Acts as a tumor suppressor in non-small-cell lung cancer(NSCLC) cells. Interaction with CRTAM promotes natural killer(NK) cell cytotoxicity and interferon-gamma(IFN-gamma) secretion by CD8+ cells in vitro as well as NK cell-mediated rejection of tumors expressing CADM3 in vivo. May contribute to the less invasive phenotypes of lepidic growth tumor cells. In mast cells, may mediate attachment to and promote communication with nerves. CADM1, together with MITF, is essential for development and survival of mast cells in vivo. Acts as a synaptic cell adhesion molecule and plays a role in the formation of dendritic spines and in synapse assembly. May be involved in neuronal migration, axon growth, pathfinding, and fasciculation on the axons of differentiating neurons. May play diverse roles in the spermatogenesis including in the adhesion of spermatocytes and spermatids to Sertoli cells and for their normal differentiation into mature spermatozoa.

Immunogen information

Immunogen:	cell adhesion molecule 1
Synonyms:	Cell adhesion molecule 1 Immunoglobulin superfamily member 4 (IgSF4) Nectin-like protein 2 (NECL-2) Spermatogenic immunoglobulin superfamily (SgIgSF) Synaptic cell adhesion molecule (SynCAM) Tumor suppressor in lung cancer 1 (TSLC-1) CADM1 IGSF4 IGSF4A NECL2 SYNCAM TSLC1

Observed MW: 49-60 kDa

Uniprot ID : Q9BY67

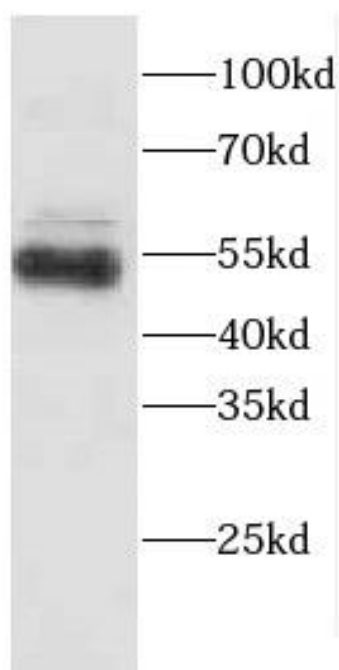
Application

Reactivity: Mouse

Tested Application: ELISA, WB

Recommended dilution: WB: 1:500-1:2000

Image:



mouse liver tissue were subjected to SDS PAGE followed by western blot with FNab01190(CADM1 antibody) at dilution of 1:1000