

CARTPT antibody

Product Information

Catalog No.:	FNab01278
Size:	100µg
Form:	liquid
Purification:	Immunogen affinity purified
Purity:	≥95% as determined by SDS-PAGE
Host:	Rabbit
Clonality:	polyclonal
Clone ID:	None
IsoType:	IgG
Storage:	PBS with 0.02% sodium azide and 50% glycerol pH 7.3, -20°C for 12 months(Avoid repeated freeze / thaw cycles.)

Background

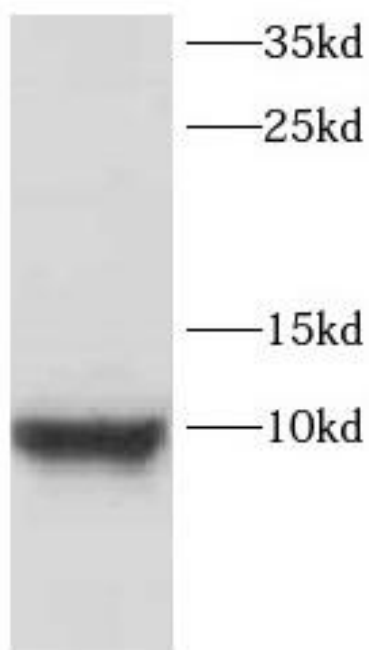
Satiety factor closely associated with the actions of leptin and neuropeptide y; this anorectic peptide inhibits both normal and starvation-induced feeding and completely blocks the feeding response induced by neuropeptide Y and regulated by leptin in the hypothalamus. It promotes neuronal development and survival in vitro.

Immunogen information

Immunogen:	CART prepropeptide
Synonyms:	Cocaine- and amphetamine-regulated transcript protein CART(1-39) CART(42-89) CARTPT CART
Observed MW:	4-14 kDa
Uniprot ID :	Q16568

Application

Reactivity:	Human, Mouse, Rat
Tested Application:	ELISA, WB
Recommended dilution: WB:	1:500-1:2000
Image:	



SH-SY5Y cells were subjected to SDS PAGE followed by western blot with FNab01278(CARTPT antibody) at dilution of 1:800