

## PECAM1 antibody

### Product Information

Catalog No.:	FNab01463
Size:	100µg
Form:	liquid
Purification:	Immunogen affinity purified
Purity:	≥95% as determined by SDS-PAGE
Host:	Rabbit
Clonality:	polyclonal
Clone ID:	None
IsoType:	IgG
Storage:	PBS with 0.02% sodium azide and 50% glycerol pH 7.3, -20°C for 12 months (Avoid repeated freeze / thaw cycles.)

### Background

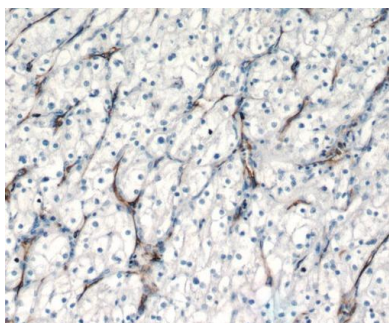
The protein encoded by this gene is found on the surface of platelets, monocytes, neutrophils, and some types of T-cells, and makes up a large portion of endothelial cell intercellular junctions. The encoded protein is a member of the immunoglobulin superfamily and is likely involved in leukocyte migration, angiogenesis, and integrin activation.

### Immunogen information

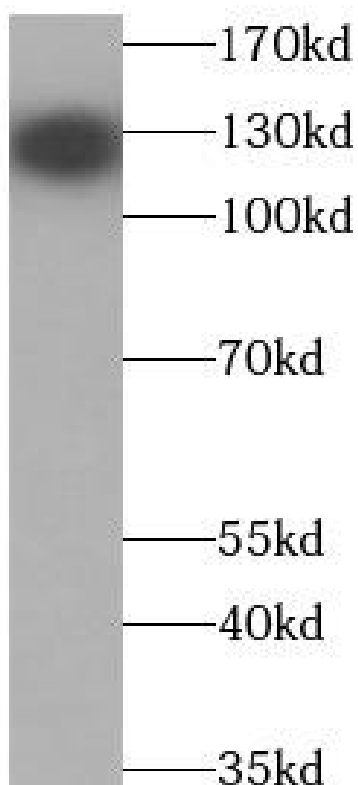
Immunogen:	platelet/endothelial cell adhesion molecule
Synonyms:	Platelet endothelial cell adhesion molecule (PECAM-1) EndoCAM GPIIA' PECA1 PECAM1
Observed MW:	130 kDa
Uniprot ID :	P16284

### Application

Reactivity:	Human, Mouse, Rat
Tested Application:	ELISA, WB, IHC
Recommended dilution:	WB: 1:500 - 1:2000; IHC: 1:50 - 1:200
Image:	



Immunohistochemistry of paraffin-embedded human renal cell carcinoma tissue slide using FNab01463( CD31 Antibody) at dilution of 1:100



Jurkat cells were subjected to SDS PAGE followed by western blot with FNab01463( CD31 Antibody) at dilution of 1:1000