

EML2 antibody

Product Information

Catalog No.:	FNab02757
Size:	100µg
Form:	liquid
Purification:	Immunogen affinity purified
Purity:	≥95% as determined by SDS-PAGE
Host:	Rabbit
Clonality:	polyclonal
Clone ID:	None
IsoType:	IgG
Storage:	PBS with 0.02% sodium azide and 50% glycerol pH 7.3, -20°C for 12 months(Avoid repeated freeze / thaw cycles.)

Background

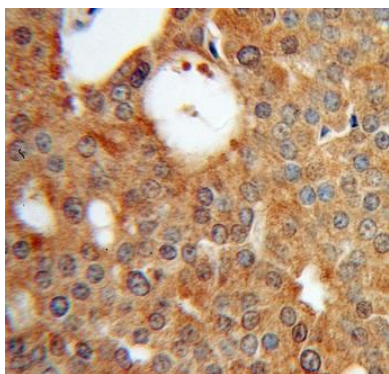
Tubulin binding protein that inhibits microtubule nucleation and growth, resulting in shorter microtubules.

Immunogen information

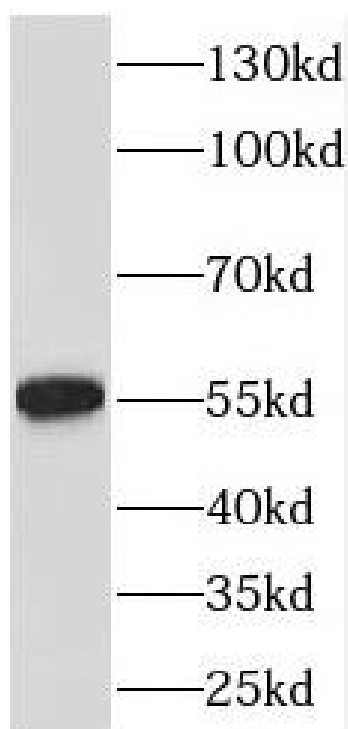
Immunogen:	echinoderm microtubule associated protein like 2
Synonyms:	Echinoderm microtubule-associated protein-like 2 (EMAP-2, HuEMAP-2) EML2 EMAP2 EMAPL2
Observed MW:	55 kDa
Uniprot ID :	O95834

Application

Reactivity:	Human, Mouse, Rat
Tested Application:	ELISA, WB, IHC
Recommended dilution:	WB: 1:500-1:2000; IHC: 1:20-1:200
Image:	



Immunohistochemistry of paraffin-embedded human prostate cancer using FNab02757(EML2 antibody) at dilution of 1:100



PC-3 cells were subjected to SDS PAGE followed by western blot with FNab02757(EML2 antibody) at dilution of 1:400