

## KRI1 antibody

### Product Information

Catalog No.:	FNab04646
Size:	100µg
Form:	liquid
Purification:	Immunogen affinity purified
Purity:	≥95% as determined by SDS-PAGE
Host:	Rabbit
Clonality:	polyclonal
Clone ID:	None
IsoType:	IgG
Storage:	PBS with 0.02% sodium azide and 50% glycerol pH 7.3, -20°C for 12 months(Avoid repeated freeze / thaw cycles.)

### Background

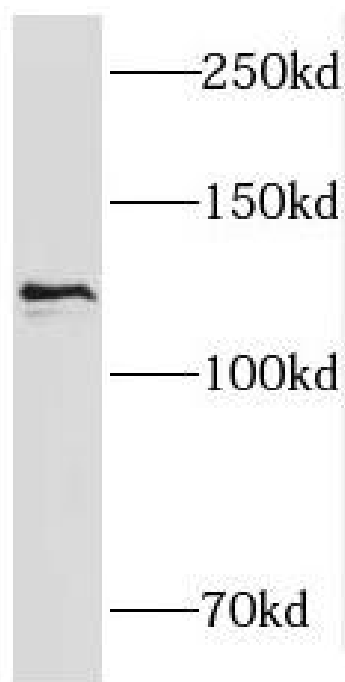
None

### Immunogen information

Immunogen:	KRI1 homolog
Synonyms:	Protein KRI1 homolog KRI1
Observed MW:	120 kDa
Uniprot ID :	Q8N9T8

### Application

Reactivity:	Human, Mouse, Rat
Tested Application:	ELISA, WB, IF
Recommended dilution:	WB: 1:500-1:2000; IF: 1:20-1:200
Image:	



HEK-293 cells were subjected to SDS PAGE followed by western blot with FNab04646( KRI1 Antibody) at dilution of 1:600