

## NAPB antibody

### Product Information

Catalog No.:	FNab05546
Size:	100µg
Form:	liquid
Purification:	Immunogen affinity purified
Purity:	≥95% as determined by SDS-PAGE
Host:	Rabbit
Clonality:	polyclonal
Clone ID:	None
IsoType:	IgG
Storage:	PBS with 0.02% sodium azide and 50% glycerol pH 7.3, -20°C for 12 months(Avoid repeated freeze / thaw cycles.)

### Background

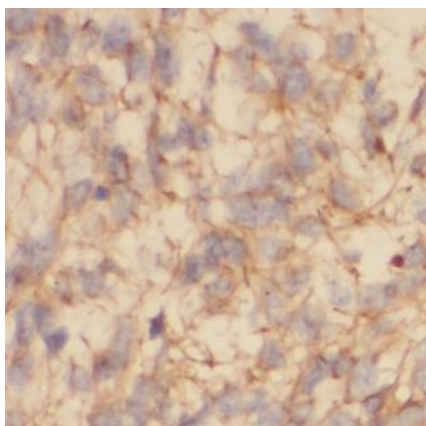
Required for vesicular transport between the endoplasmic reticulum and the Golgi apparatus.

### Immunogen information

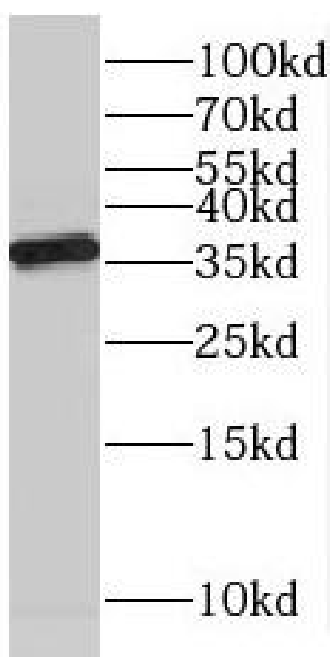
Immunogen:	N-ethylmaleimide-sensitive factor attachment protein, beta
Synonyms:	Beta-soluble NSF attachment protein (SNAP-beta) N-ethylmaleimide-sensitive factor attachment protein beta NAPB SNAPB
Observed MW:	35-38 kDa
Uniprot ID :	Q9H115

### Application

Reactivity:	Human, Mouse, Rat
Tested Application:	ELISA, WB, IHC, IF
Recommended dilution:	WB: 1:500-1:2000; IHC: 1:20-1:200; IF: 1:20-1:200
Image:	



Immunohistochemistry of paraffin-embedded human gliomas using FNab05546(NAPB antibody) at dilution of 1:100



mouse brain tissue were subjected to SDS PAGE followed by western blot with FNab05546(NAPB antibody) at dilution of 1:1200