

## PREP antibody

### Product Information

Catalog No.:	FNab06767
Size:	100µg
Form:	liquid
Purification:	Immunogen affinity purified
Purity:	≥95% as determined by SDS-PAGE
Host:	Rabbit
Clonality:	polyclonal
Clone ID:	None
IsoType:	IgG
Storage:	PBS with 0.02% sodium azide and 50% glycerol pH 7.3, -20°C for 12 months(Avoid repeated freeze / thaw cycles.)

### Background

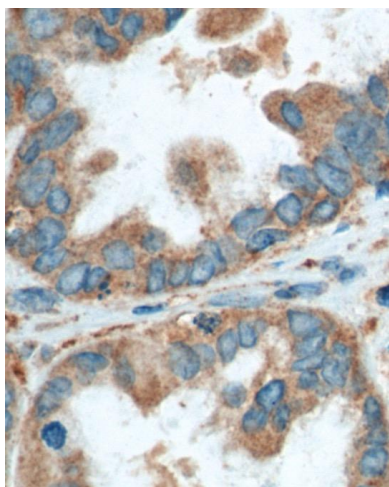
Cleaves peptide bonds on the C-terminal side of prolyl residues within peptides that are up to approximately 30 amino acids long.

### Immunogen information

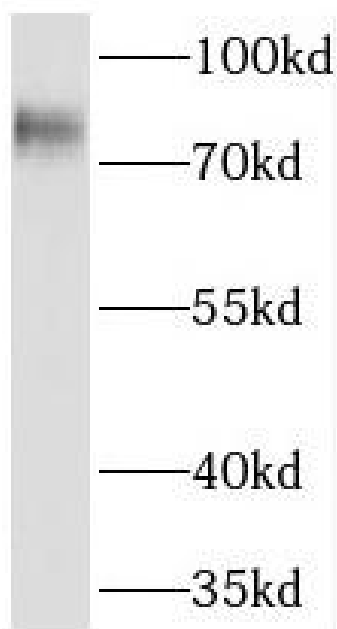
Immunogen:	prolyl endopeptidase
Synonyms:	Prolyl endopeptidase (PE) Post-proline cleaving enzyme PREP PEP
Observed MW:	81 kDa
Uniprot ID :	P48147

### Application

Reactivity:	Human, Mouse, Rat
Tested Application:	ELISA, WB, IHC
Recommended dilution:	WB: 1:500-1:2000; IHC: 1:20-1:200
Image:	



Immunohistochemistry of paraffin-embedded human ovary tumor tissue slide using FNab06767(PREP Antibody) at dilution of 1:200 heat mediated antigen retrieved with Tris-EDTA buffer(pH9).



human lung tissue were subjected to SDS PAGE followed by western blot with FNab06767(PREP antibody) at dilution of 1:400