

SH2D2A antibody

Product Information

Catalog No.:	FNab07821
Size:	100µg
Form:	liquid
Purification:	Immunogen affinity purified
Purity:	≥95% as determined by SDS-PAGE
Host:	Rabbit
Clonality:	polyclonal
Clone ID:	None
IsoType:	IgG
Storage:	PBS with 0.02% sodium azide and 50% glycerol pH 7.3, -20°C for 12 months(Avoid repeated freeze / thaw cycles.)

Background

Could be a T-cell-specific adapter protein involved in the control of T-cell activation. May play a role in the CD4-p56-LCK-dependent signal transduction pathway. Could also play an important role in normal and pathological angiogenesis. Could be an adapter protein that facilitates and regulates interaction of KDR with effector proteins important to endothelial cell survival and proliferation.

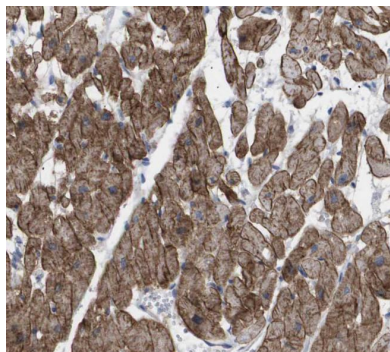
Immunogen information

Immunogen:	SH2 domain protein 2A
Synonyms:	SH2 domain-containing protein 2A SH2 domain-containing adapter protein T cell-specific adapter protein (TSAd) VEGF receptor-associated protein SH2D2A SCAP TSAD VRAP
Observed MW:	48-52 kDa
Uniprot ID :	Q9NP31

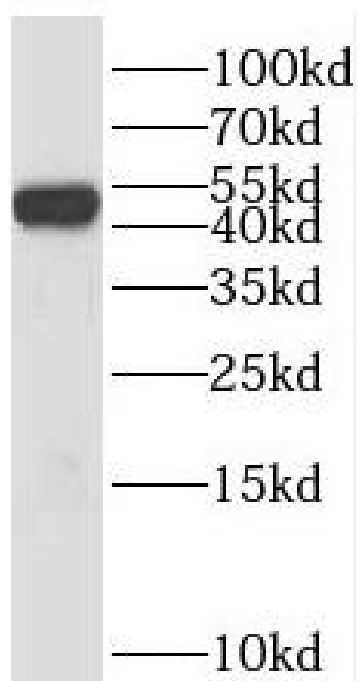
Application

Reactivity:	Human, Mouse, Rat
Tested Application:	ELISA, WB, IHC, FC
Recommended dilution:	WB: 1:500-1:2000; IHC: 1:20-1:200

Image:



Immunohistochemistry of paraffin-embedded human heart using FNab07821(SH2D2A antibody) at dilution of 1:50



K-562 cells were subjected to SDS PAGE followed by western blot with FNab07821(SH2D2A antibody) at dilution of 1:800