

SMCHD1 antibody

Product Information

Catalog No.:	FNab08021
Size:	100µg
Form:	liquid
Purification:	Immunogen affinity purified
Purity:	≥95% as determined by SDS-PAGE
Host:	Rabbit
Clonality:	polyclonal
Clone ID:	None
IsoType:	IgG
Storage:	PBS with 0.02% sodium azide and 50% glycerol pH 7.3, -20°C for 12 months(Avoid repeated freeze / thaw cycles.)

Background

Required for maintenance of X inactivation in females and hypermethylation of CpG islands associated with inactive X. Involved in a pathway that mediates the methylation of a subset of CpG islands slowly and requires the de novo methyltransferase DNMT3B(By similarity). Required for DUX4 silencing in somatic cells.

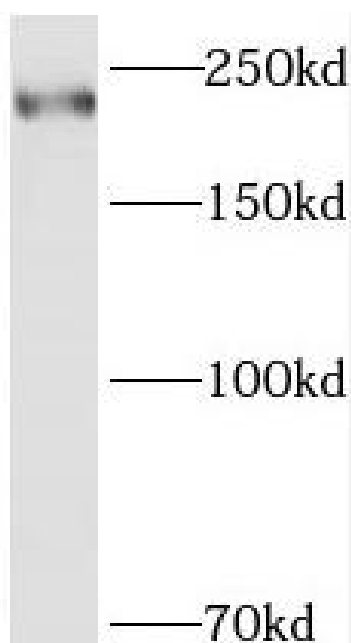
Immunogen information

Immunogen:	structural maintenance of chromosomes flexible hinge domain containing 1
Synonyms:	Structural maintenance of chromosomes flexible hinge domain-containing protein 1 (SMC hinge domain-containing protein 1) SMCHD1 KIAA0650
Observed MW:	220 kDa
Uniprot ID :	A6NHR9

Application

Reactivity:	Human
Tested Application:	ELISA, WB
Recommended dilution:WB:	1:500-1:2000

Image:



HeLa cells were subjected to SDS PAGE followed by western blot with FNab08021(SMCHD1 Antibody) at dilution of 1:600