

STAT3 antibody

Product Information

Catalog No.:	FNab08300
Size:	100µg
Form:	liquid
Purification:	Protein A+G purification
Purity:	≥95% as determined by SDS-PAGE
Host:	Mouse
Clonality:	monoclonal
Clone ID:	6A9
IsoType:	IgG2a
Storage:	PBS with 0.02% sodium azide and 50% glycerol pH 7.3, -20°C for 12 months(Avoid repeated freeze / thaw cycles.)

Background

Signal transducer and transcription activator that mediates cellular responses to interleukins, KITLG/SCF, LEP and other growth factors. Once activated, recruits coactivators, such as NCOA1 or MED1, to the promoter region of the target gene(PubMed:17344214). May mediate cellular responses to activated FGFR1, FGFR2, FGFR3 and FGFR4. Binds to the interleukin-6(IL-6)-responsive elements identified in the promoters of various acute-phase protein genes. Activated by IL31 through IL31RA. Involved in cell cycle regulation by inducing the expression of key genes for the progression from G1 to S phase, such as CCND1(PubMed:17344214). Mediates the effects of LEP on melanocortin production, body energy homeostasis and lactation(By similarity). May play an apoptotic role by transactivating BIRC5 expression under LEP activation(PubMed:18242580). Cytoplasmic STAT3 represses macroautophagy by inhibiting EIF2AK2/PKR activity. This antibody is a mouse monoclonal antibody raised against residues near the N terminus of human STAT3.

Immunogen information

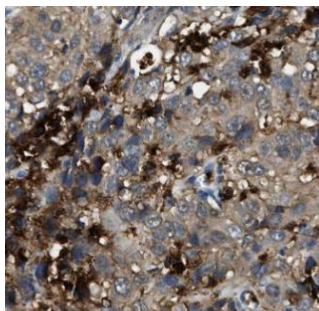
Immunogen:	signal transducer and activator of transcription 3(acute-phase response factor)
Synonyms:	Signal transducer and activator of transcription 3 Acute-phase response factor STAT3 APRF
Observed MW:	88 kDa
Uniprot ID :	P40763

Application

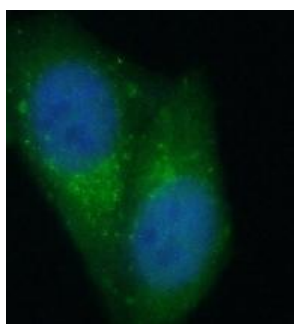
Reactivity:	Human, Mouse, Rat
Tested Application:	ELISA, WB, IHC, IF, IP

Recommended dilution: WB: 1:2000-1:20000; IP: 1:1000-1:10000; IHC: 1:50-1:500; IF: 1:50-1:500

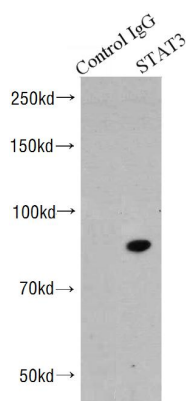
Image:



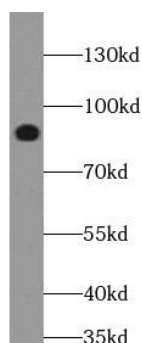
Immunohistochemistry of paraffin-embedded human cervical cancer tissue slide using FNab08300(STAT3 Antibody) at dilution of 1:300



Immunofluorescent analysis of (10% Formaldehyde) fixed HepG2 cells using FNab08300 (STAT3 Antibody) at dilution of 1:100 and Alexa Fluor 488-conjugated AffiniPure Goat Anti-Mouse IgG(H+L)



IP Result of anti-STAT3 (IP: FNab08300, 4ug; Detection: FNab08300 1:2000) with HeLa cells lysate 1500ug.



HeLa cells were subjected to SDS PAGE followed by western blot with FNab08300(STAT3 antibody) at dilution of 1:4000