

## THRAP3 antibody

### Product Information

Catalog No.:	FNab08673
Size:	100µg
Form:	liquid
Purification:	Immunogen affinity purified
Purity:	≥95% as determined by SDS-PAGE
Host:	Rabbit
Clonality:	polyclonal
Clone ID:	None
IsoType:	IgG
Storage:	PBS with 0.02% sodium azide and 50% glycerol pH 7.3, -20°C for 12 months(Avoid repeated freeze / thaw cycles.)

### Background

Involved in pre-mRNA splicing. Remains associated with spliced mRNA after splicing which probably involves interactions with the exon junction complex(EJC). Can trigger mRNA decay which seems to be independent of nonsense-mediated decay involving premature stop codons(PTC) recognition. May be involved in nuclear mRNA decay. Involved in regulation of signal-induced alternative splicing. During splicing of PTPRC/CD45 is proposed to sequester phosphorylated SFPQ from PTPRC/CD45 pre-mRNA in resting T-cells. Involved in cyclin-D1/CCND1 mRNA stability probably by acting as component of the SNARP complex which associates with both the 3'end of the CCND1 gene and its mRNA. Involved in response to DNA damage. Is excluded from DNA damage sites in a manner that parallels transcription inhibition; the function may involve the SNARP complex. Initially thought to play a role in transcriptional coactivation through its association with the TRAP complex; however, it is not regarded as a stable Mediator complex subunit. Cooperatively with HELZ2, enhances the transcriptional activation mediated by PPARG, maybe through the stabilization of the PPARG binding to DNA in presence of ligand. May play a role in the terminal stage of adipocyte differentiation. Plays a role in the positive regulation of the circadian clock. Acts as a coactivator of the CLOCK-ARNTL/BMAL1 heterodimer and promotes its transcriptional activator activity and binding to circadian target genes(PubMed:24043798).

### Immunogen information

Immunogen:	thyroid hormone receptor associated protein 3
Synonyms:	Thyroid hormone receptor-associated protein 3 BCLAF1 and THRAP3 family member 2 Thyroid hormone receptor-associated protein complex 150 kDa component (Trap150) THRAP3 BCLAF2 TRAP150
Observed MW:	109-130 kDa
Uniprot ID :	Q9Y2W1

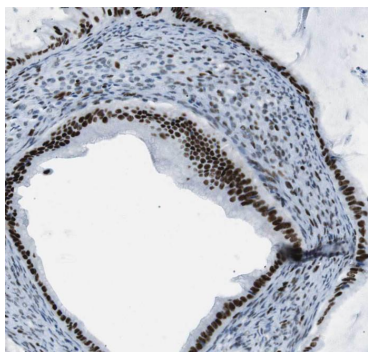
## Application

Reactivity: Human

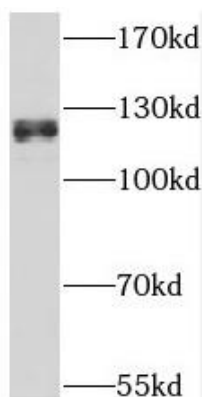
Tested Application: ELISA, WB, IHC

Recommended dilution: WB: 1:500-1:2000; IHC: 1:20-1:200

Image:



Immunohistochemistry of paraffin-embedded human ovary tumor tissue slide using FNab08673(THRAP3 Antibody) at dilution of 1:50



HeLa cells were subjected to SDS PAGE followed by western blot with FNab08673(THRAP3 antibody) at dilution of 1:500