

## UBE2D1 antibody

### Product Information

|               |   |
|---------------|---|
| Catalog No.:  | FNab09167   |
| Size:         | 100µg   |
| Form:         | liquid  |
| Purification: | Immunogen affinity purified   |
| Purity:       | ≥95% as determined by SDS-PAGE  |
| Host:         | Rabbit  |
| Clonality:    | polyclonal  |
| Clone ID:     | None  |
| IsoType:      | IgG   |
| Storage:      | PBS with 0.02% sodium azide and 50% glycerol pH 7.3, -20°C for 12 months (Avoid repeated freeze / thaw cycles.) |

### Background

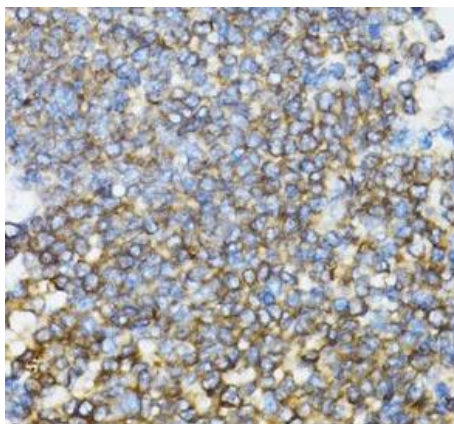
This antibody can recognize all the four members of UBE2D due to the high homology.

### Immunogen information

|              |   |
|--------------|---|
| Immunogen:   | ubiquitin-conjugating enzyme E2D 1  |
| Synonyms:    | Ubiquitin-conjugating enzyme E2 D1 (E3-independent) E2 ubiquitin-conjugating enzyme D1 E2 ubiquitin-conjugating enzyme D1 Stimulator of Fe transport (SFT) UBC4/5 homolog UbcH5 Ubiquitin carrier protein D1 Ubiquitin-conjugating enzyme E2(17)KB 1 Ubiquitin-conjugating enzyme E2-17 kDa 1 Ubiquitin-protein ligase D1 UBE2D1 SFT UBC5A UBCH5 UBCH5A |
| Observed MW: | 14 kDa  |
| Uniprot ID : | P51668  |

### Application

|                       |                                       |
|-----------------------|---------------------------------------|
| Reactivity:           | Human, Mouse, Rat                     |
| Tested Application:   | ELISA, WB, IHC                        |
| Recommended dilution: | WB: 1:500 - 1:2000; IHC: 1:50 - 1:200 |
| Image:                |                                       |



Immunohistochemistry of paraffin-embedded rat spleen using FNab09167(UBE2D1 antibody) at dilution of 1:50



mouse thymus tissue were subjected to SDS PAGE followed by western blot with FNab09167(UBE2D1 antibody) at dilution of 1:1000