

WTAP antibody

Product Information

Catalog No.:	FNab09530
Size:	100µg
Form:	liquid
Purification:	Protein A+G purification
Purity:	≥95% as determined by SDS-PAGE
Host:	Mouse
Clonality:	monoclonal
Clone ID:	9D4
IsoType:	IgG1
Storage:	PBS with 0.02% sodium azide and 50% glycerol pH 7.3, -20°C for 12 months(Avoid repeated freeze / thaw cycles.)

Background

Regulatory subunit of the WMM N6-methyltransferase complex, a multiprotein complex that mediates N6-methyladenosine(m6A) methylation of some adenosine residues of some mRNAs and plays a role in the efficiency of mRNA splicing, processing and mRNA stability. Required for accumulation of METTL3 and METTL14 to nuclear speckle(PubMed:24316715, PubMed:24407421, PubMed:24981863). Acts as a mRNA splicing regulator(PubMed:12444081). Regulates G2/M cell-cycle transition by binding to the 3' UTR of CCNA2, which enhances its stability(PubMed:17088532). Impairs WT1 DNA-binding ability and inhibits expression of WT1 target genes(PubMed:17095724).

Immunogen information

Immunogen:	Wilms tumor 1 associated protein
Synonyms:	Pre-mRNA-splicing regulator WTAP Female-lethal(2)D homolog (hFL(2)D) WT1-associated protein Wilms tumor 1-associating protein WTAP KIAA0105
Observed MW:	49 kDa
Uniprot ID :	Q15007

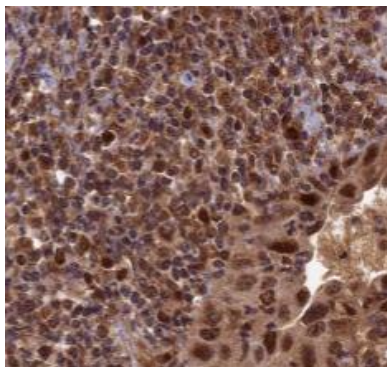
Application

Reactivity:	Human, Mouse, Rat
-------------	-------------------

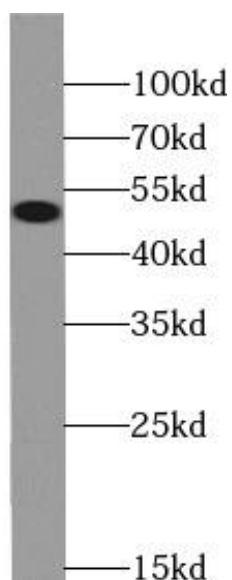
Tested Application: ELISA, WB, IHC

Recommended dilution: WB: 1:1000-1:10000; IHC: 1:50-1:500

Image:



Immunohistochemistry of paraffin-embedded human cervical cancer using FNab09530(WTAP antibody) at dilution of 1:50



HEK-293 cells were subjected to SDS PAGE followed by western blot with FNab09530(WTAP Antibody) at dilution of 1:2000