

Human TSH Antibody, mAb, Mouse

Host: Mouse

Immunogen: purified TSH from human pituitary

Purification: Protein A affinity column

Conjugation: Unconjugated

Version: 03/04/2011

PRODUCT INFORMATION

Cat.No	Clone	Ig Subclass	Size
A01709	1H4G9	IgG1, k	1 mg
A01710	2D10F6	IgG1, k	1 mg
A01711	2B9H4	IgG2a, k	1 mg
A01712	26A7D2	IgG1, k	1 mg
A01713	28F7B8	IgG2b, k	1 mg
A01714	3B12D11	IgG1, k	1 mg

Description

Thyrotropin-stimulating hormone (TSH) is a noncovalently linked glycoprotein heterodimer and is part of a family of pituitary hormones containing a common alpha subunit and a unique beta subunit that confers specificity. Free alpha and beta subunits have essentially no biological activity. TSH is secreted from cells in the anterior pituitary and it is indispensable for the control of thyroid structure and metabolism.

GenScript Human TSH Antibody, mAb, Mouse is produced from the hybridoma resulting from fusion of Sp2/0 myeloma and lymphocytes obtained from mouse immunized with purified TSH from human pituitary.

Species Reactivity

TSH monoclonal antibodies (1H4G9, 2D10F6, 2B9H4, 26A7D2, 28F7B8 and 3B12D11) recognize TSH. They have no cross-reactivity with human HCG.

Product Buffer

PBS, pH 7.4, containing 0.02% sodium azide.

Storage

GenScript Human TSH Antibody, mAb, Mouse should be stored at -20°C or below until use. Avoid repeated freezing and thawing cycles.

Applications

These antibodies are perfect choice for *in vitro* diagnostic assay development. And they are prepared for non-clinical research use only. The recommended pairs are based on our laboratory results.

Capture \ Detection	A01709 (1H4G9)	A01710 (2D10F6)	A01711 (2B9H4)	A01712 (26A7D2)	A01713 (28F7B8)	A01714 (3B12D11)
A01709 (1H4G9)	-	-	-	+++	-	-
A01710 (2D10F6)	-	-	-	++	-	-
A01711 (2B9H4)	-	-	-	-	+	-
A01712 (26A7D2)	+	+	+	-	-	++
A01713 (28F7B8)	-	-	+++	-	-	-
A01714 (3B12D11)	-	-	-	-	-	-

Example

** For non-clinical research use only. **

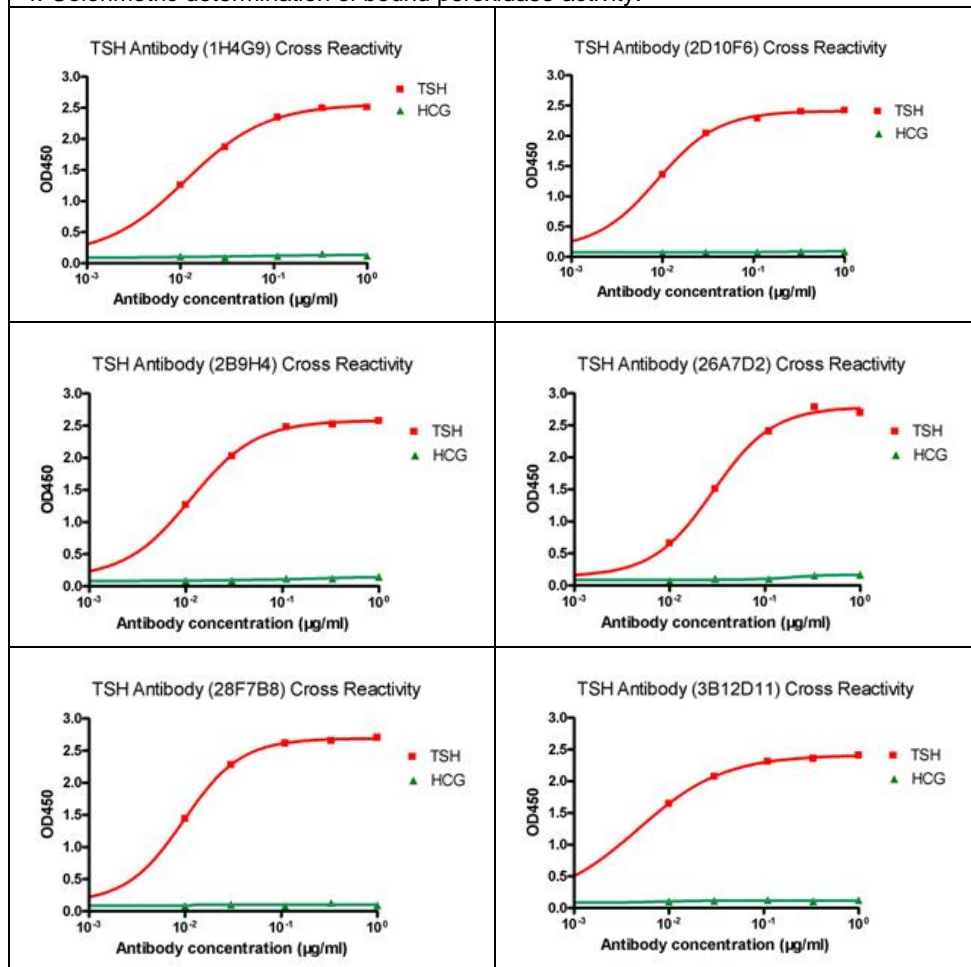
860 Centennial Ave., Piscataway, NJ 08854, USA

Toll-Free: 1-877-436-7274 Tel: 1-732-885-9188 Fax: 1-732-210-0262 Email: product@genscript.com Web: www.genscript.com

Cross-reactivity of TSH monoclonal antibodies by Indirect ELISA:

General conditions:

1. Microplate was incubated with human TSH, or human HCG respectively, followed by 3 washing cycles.
2. Incubation with mouse anti-TSH antibody followed by 3 washing cycles.
3. Incubation with goat anti-mouse IgG conjugated to peroxidase, followed by 3 washing cycles.
4. Colorimetric determination of bound peroxidase activity.



Antibody pairs analysis of TSH monoclonal antibodies by Sandwich ELISA:

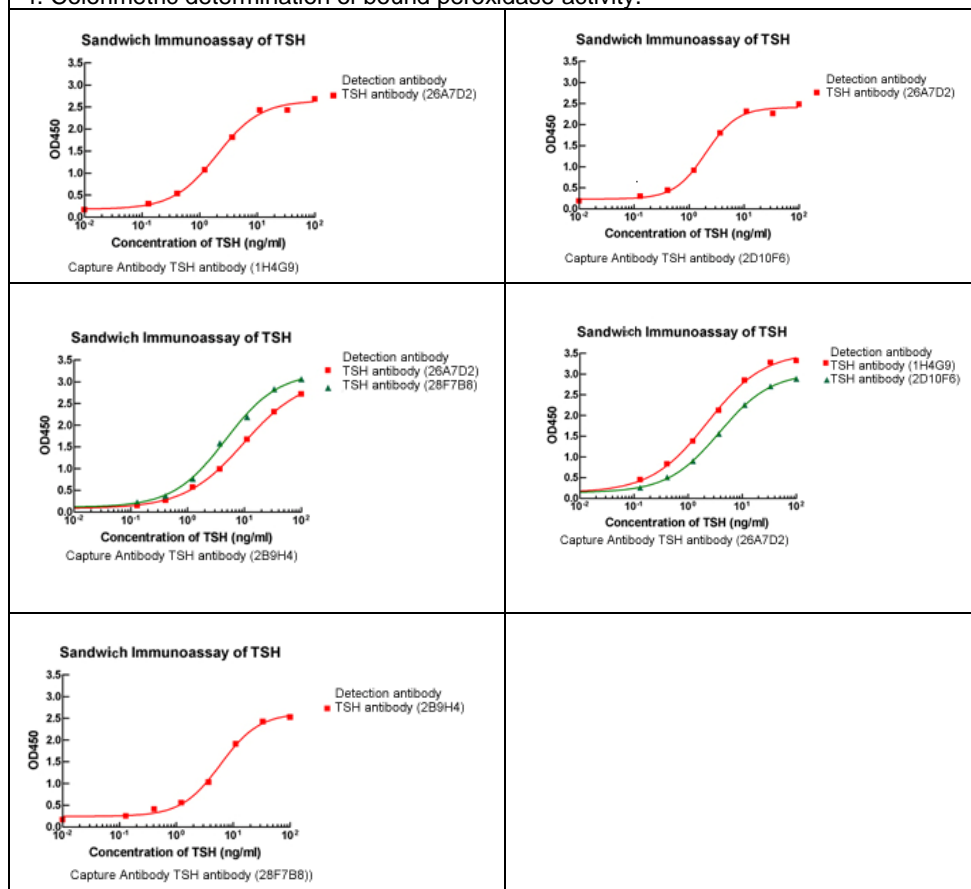
General conditions:

** For non-clinical research use only. **

860 Centennial Ave., Piscataway, NJ 08854, USA

Toll-Free: 1-877-436-7274 Tel: 1-732-885-9188 Fax: 1-732-210-0262 Email: product@genscript.com Web: www.genscript.com

1. Microplate was incubated with a capture antibody against TSH, followed by 3 washing cycles.
2. Incubation with TSH followed by 3 washing cycles.
3. Incubation with peroxidase conjugated detection antibody against TSH, followed by 3 washing cycles.
4. Colorimetric determination of bound peroxidase activity.



** For non-clinical research use only. **

860 Centennial Ave., Piscataway, NJ 08854, USA

Toll-Free: 1-877-436-7274 Tel: 1-732-885-9188 Fax: 1-732-210-0262 Email: product@genscript.com Web: www.genscript.com