

## Human CD38 Antibody (38.H1), mAb, Mouse

### PRODUCT INFORMATION

#### Description

CD38 glycoprotein is a particularly attractive target on malignant plasma cells at all stages of disease and in Chronic lymphocytic leukemia (also called CLL) patients with a poor clinical prognosis. It is highly expressed in lymphoid tumors including multiple myeloma, AIDS-associated lymphomas, and post-transplant lymphoproliferation. In contrast, the molecule is detectable only at very low levels in mature lymphocytes or in nonhematopoietic tissues. Therapeutic Anti-CD38 antibodies (e.g. Daratumumab) can induce strong antibody-dependent cellular cytotoxicity and complement-dependent cytotoxicity to kill tumors.

**GenScript Human CD38 Antibody (38.H1), mAb, Mouse** is produced from a hybridoma resulting from the fusion of SP2/0 myeloma and B-lymphocytes obtained from a mouse immunized with recombinant human CD38.

#### Specificity

The product is specific for human CD38. This antibody binds with recombinant CD38 protein in ELISA and human CD38 expressing cell line in flow cytometry assay.

#### Concentration

0.5 mg/ml, lyophilized with PBS, pH 7.4, containing 0.02% sodium azide. (It could be customized for bulk order.)

#### Note

GenScript can customize this product per customer's request including product size, buffer components, etc.

#### Reconstitution

Reconstitute the lyophilized antibody with deionized water (or equivalent) to a final concentration of 0.5 mg/ml.

#### Storage

The lyophilized product remains stable up to 1 year at -20 °C from date of receipt. Upon reconstitution, it can be stored for 2-3 weeks at 2-8 °C or for up to 12 months at -20 °C or below. Avoid repeated freezing and thawing cycles.

#### Applications

Working concentrations for specific applications should be determined by the investigators. The appropriate concentrations may be affected by secondary antibody affinity, antigen concentration, the sensitivity of the method of detection, temperature, the length of the incubations, and other factors. The suitability of this antibody for applications other than those listed below has not been determined. The following concentration ranges are recommended starting points for this product.

ELISA detection: 0.01-0.1 µg/ml

Flow cytometry: 2-10 µg/ml

Other applications: user-optimized

**Cat. No.:** A01873-40

**Host:** Mouse

**Size:** 40 µg

**Ig Subclass:** IgG2b,k

**Clone:** 38.H1

**Immunogen:** Recombinant human CD38

**UniProt Accession:** P28907

**Gene ID:** 952

**Purification:** Protein A affinity column

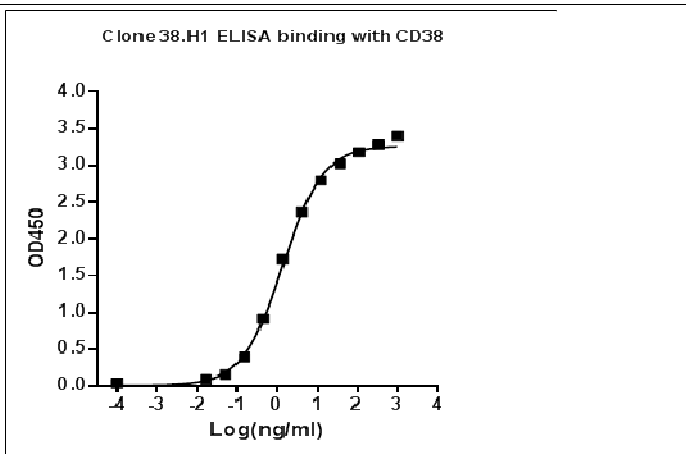
**Conjugation:** Unconjugated

**Version:** 06/13/2017

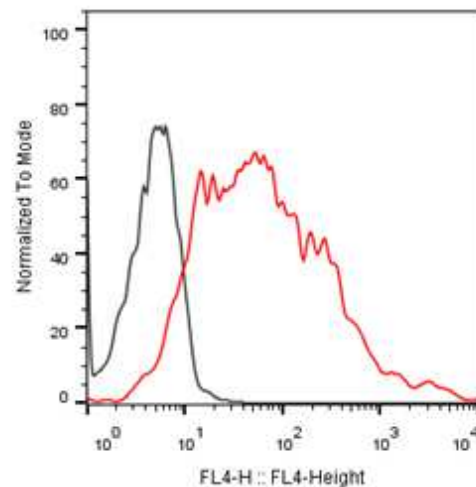
\*\* For non-clinical research use only. \*\*

**860 Centennial Ave., Piscataway, NJ 08854, USA**

### Example



ELISA binding of **Human CD38 antibody (38.H1)** (GenScript, A01873-40) with Human CD38 recombinant protein,  
Coating antigen: Human CD38 recombinant protein, 1 µg/ml,  
CD38 antibody dilution start from 1000 ng/ml,  
EC<sub>50</sub>= 1.38 ng/ml.



Flow cytometric analysis of CHO-K1/Human CD38 stable cell line expressing CD38 (GenScript, M00553, Red) and CHO negative control cell (Black) binding with **Human CD38 Antibody (38.H1)** (GenScript, A01873-40),  
Antibody working concentration: 5 µg/ml, 2.5x10<sup>5</sup> cells/reaction,  
The signal was developed with iFluor647 conjugated Goat Anti-Mouse IgG.

\*\* For non-clinical research use only. \*\*

**860 Centennial Ave., Piscataway, NJ 08854, USA**