

# Human LAG3 Antibody (LG.B5) , mAb, Mouse

## PRODUCT INFORMATION

### Description

LAG-3 (Lymphocyte activation gene-3), designated CD223, is a 70 kDa type I transmembrane protein that is a member of the immunoglobulin superfamily (IgSF). LAG-3 is expressed on activated CD4+ and CD8+ T cells, NK cells, and plasmacytoid dendritic cells (pDC), but not on resting T cells. LAG-3 on activated CD4+CD25+ Treg cells plays a role in their suppressive activity. LAG-3 limits the expansion of activated T cells and pDC in response to selected stimuli. In mice, deletion of LAG-3 and another negative regulator, PD-1, facilitates anti-cancer response but also blocks self-tolerance and increases susceptibility to autoimmune diseases. In humans, antibody-mediated down-regulation of LAG-3 and PD-1 allows more effective control of chronic malaria, while in NOD (non-obese diabetic) mice, deletion of LAG-3 alone accelerates diabetes.

**GenScript Human LAG3 Antibody (LG.B5), mAb, Mouse** is produced from a hybridoma resulting from the fusion of SP2/0 myeloma and B-lymphocytes obtained from a mouse immunized with Recombinant human LAG3-Fc (R&D, 2319-L3).

### Specificity

The product is specific for human LAG3. This antibody binds human LAG3 recombinant protein and cell surface-expressing LAG3.

### Concentration

0.5 mg/ml, lyophilized with PBS, pH 7.4, containing 0.02% sodium azide. (It could be customized for bulk order.)

### Note

GenScript can customize this product per customer's request including product size, buffer components, etc.

### Reconstitution

Reconstitute the lyophilized antibody with deionized water (or equivalent) to a final concentration of 0.5 mg/ml.

### Storage

The lyophilized product remains stable up to 1 year at -20 °C from date of receipt. Upon reconstitution, it can be stored for 2-3 weeks at 2-8 °C or for up to 12 months at -20 °C or below. Avoid repeated freezing and thawing cycles.

### Applications

Working concentrations for specific applications should be determined by the investigators. The appropriate concentrations may be affected by secondary antibody affinity, antigen concentration, the sensitivity of the method of detection, temperature, the length of the incubations, and other factors. The suitability of this antibody for applications other than those listed below has not been determined. The following concentration ranges are recommended

**Cat. No.:** A01876-40

**Host:** Mouse

**Size:** 40 µg

**Ig Subclass:** IgG1,κ

**Clone:** LG.B5

**Immunogen:** Recombinant human LAG3-Fc (R&D, 2319-L3)

**UniProt Accession:** P18627

**Gene ID:** 3902

**Purification:** Protein A affinity column

**Conjugation:** Unconjugated

**Version:** 06/15/2017

\*\* For non-clinical research use only. \*\*

**860 Centennial Ave., Piscataway, NJ 08854, USA**

Toll-Free: 1-877-436-7274 Tel: 1-732-885-9188 Fax: 1-732-210-0262 Email: [product@genscript.com](mailto:product@genscript.com) Web: [www.genscript.com](http://www.genscript.com)

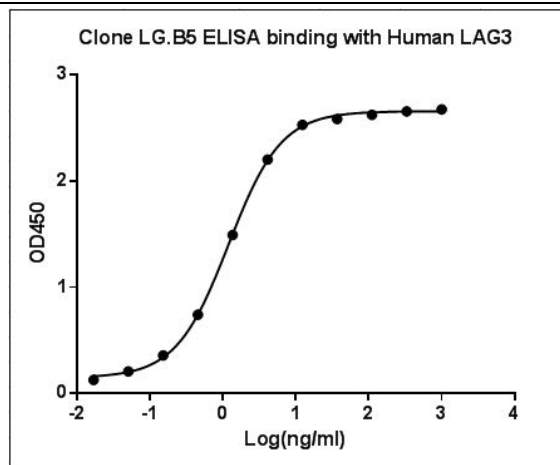
starting points for this product.

ELISA detection: 0.01-0.1 µg/ml

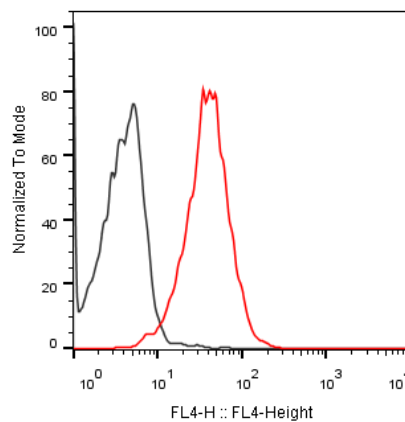
Flow cytometry: 2-10 µg/ml

Other applications: user-optimized

### Example



ELISA binding of **Human LAG3 Antibody (LG.B5)** (GenScript, A01876-40) with Recombinant human LAG3-Fc (R&D, 2319-L3),  
Coating antigen: Recombinant human LAG3-Fc, 0.5 µg/ml,  
LAG3 antibody dilution start from 1000 ng/ml,  
EC<sub>50</sub>= 1.203 ng/ml.



Flow cytometric analysis of CHO-K1/LAG3 stable cell expressing LAG3 (GenScript, M00532) binding with **Human LAG3 Antibody (LG.B5)** (GenScript, A01876-40),  
Antibody concentration: 5 µg/ml, 2.5x10<sup>5</sup> cells/reaction,  
The signal was developed with iFluor647 conjugated Goat Anti-Mouse IgG.

\*\* For non-clinical research use only. \*\*

**860 Centennial Ave., Piscataway, NJ 08854, USA**

Toll-Free: 1-877-436-7274 Tel: 1-732-885-9188 Fax: 1-732-210-0262 Email: [product@genscript.com](mailto:product@genscript.com) Web: [www.genscript.com](http://www.genscript.com)