

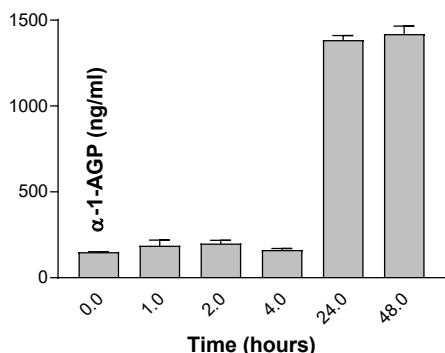
MOUSE ALPHA-1-ACID GLYCOPROTEIN (AGP) ELISA

Life Diagnostics, Inc., Catalog Number: AGP-1

INTRODUCTION

AGP is an acute phase protein that is elevated in serum due to injury, infection, or disease. Studies performed at Life Diagnostics Inc., have demonstrated a ten-fold increase of AGP in BALB/c mice after injection with lipopolysaccharide (Figure below).

LPS Induced AGP Levels in BALB/c Mice



PRINCIPLE OF THE ASSAY

The assay uses affinity purified mouse AGP antibodies for solid phase (microtiter wells) immobilization and horseradish peroxidase (HRP) conjugated mouse AGP antibodies for detection. Standards and diluted samples are incubated in the microtiter wells for 45 minutes. The wells are subsequently washed. HRP conjugate is added and incubated for 45 minutes. This results in AGP molecules being sandwiched between the immobilization and detection antibodies. The wells are then washed to remove unbound HRP-conjugate and TMB is added and incubated for 20 minutes. If AGP is present a blue color develops. Color development is stopped by the addition of Stop solution, changing the color to yellow. Absorbance is measured at 450 nm. The concentration of AGP is proportional to absorbance and is derived from a standard curve.

MATERIALS AND COMPONENTS

Materials provided with the kit:

- AGP antibody coated 96-well plate (12 x 8-well strips)
- HRP Conjugate, 11 ml
- AGP stock (lyophilized)
- 20x Wash solution: TBS50-20, 50 ml
- 10x Diluent: YD25-10, 25 ml
- TMB: TMB11-1, 11 ml
- Stop solution: SS11-1, 11 ml

Materials required but not provided:

- Pipettors and tips
- Distilled or deionized water
- Polypropylene or glass tubes
- Vortex mixer
- Absorbent paper or paper towels
- Plate incubator/shaker
- Plate washer
- Plate reader capable of measuring absorbance at 450 nm.
- Curve fitting software

STORAGE

The unused kit should be stored at 4°C and the microtiter plate should be kept in a sealed bag with desiccant. Kits will remain stable for six months from the date of purchase.

GENERAL INSTRUCTIONS

1. All reagents should be allowed to reach room temperature before use.
2. Reliable and reproducible results will be obtained when the assay is carried out with a complete understanding of the instructions and with adherence to good laboratory practice.
3. The wash procedure is critical. Insufficient washing will result in poor precision and falsely elevated absorbance readings.
4. Laboratory temperature will influence absorbance readings. Our ELISA kits are calibrated using shaking incubators set at 150 rpm and 25°C. Performance of the assay at lower temperatures will result in lower absorbance values.

DILUENT PREPARATION

The diluent is provided as a 10x stock. Prior to use estimate the final volume of diluent required for your assay and dilute one volume of the 10x stock with nine volumes of distilled or deionized water.

WASH SOLUTION PREPARATION

The wash solution is provided as a 20x stock. Prior to use dilute the contents of the bottle (50 ml) with 950 ml of distilled or deionized water.

STANDARD PREPARATION

1. The mouse AGP stock is provided lyophilized. Add the volume of distilled or de-ionized water indicated on the vial label and mix gently until dissolved (**the reconstituted standard remains stable for at least 10 days at 4°C but should be aliquoted and frozen at -20°C after reconstitution if use beyond this time is intended**).
2. Label 7 polypropylene or glass tubes as 300, 150, 75, 37.5, 18.8, 9.4 and 4.7 ng/ml.
3. In the tube labeled 300 ng/ml prepare the 300 ng/ml standard as detailed on the stock vial label.
4. Dispense 250 μ l of diluent into the tubes labeled 150, 75, 37.5, 18.8, 9.4 and 4.7 ng/ml.
5. Prepare the 150 ng/ml standard by mixing 250 μ l of the 300 ng/ml standard with 250 μ l of diluent in the tube labeled 150 ng/ml.
6. Similarly prepare the remaining standards by two-fold serial dilution.

SAMPLE PREPARATION

We found that AGP is present in BALB/c mouse serum at concentrations of 0.16 to 1.4 mg/ml. To obtain values within the range of the standard curve we suggest that samples initially be diluted 15,000-fold using the following procedure for each sample to be tested:

1. Dispense 998 μ l and 290 μ l of 1x diluent into separate tubes.

- Pipette and mix 2 μl of the serum/plasma sample into the tube containing 998 μl of diluent. This provides a 500-fold diluted sample.
- Mix 10 μl of the 500-fold diluted sample with the 290 μl of diluent in the second tube. This provides a 15,000-fold dilution of the sample.

AGP levels may vary with mouse strain, animal husbandry and study protocol. Therefore, please be aware that optimal serum or plasma dilutions should be determined empirically.

ASSAY PROCEDURE

- Secure the desired number of 8-well strips in the holder. Unused strips should be stored in the re-sealed bag with desiccant at 4°C for future use.
- Dispense 100 μl of standards and samples into the wells (we recommend that standards and samples be run in duplicate).
- Incubate on an orbital micro-plate shaker at 150 rpm and 25°C for 45 minutes.
- Empty and wash the microtiter wells 5x with 1x wash solution using a plate washer (400 μl /well).
- Strike the wells sharply onto absorbent paper or paper towels to remove all residual droplets.
- Add 100 μl of HRP-conjugate into each well.
- Incubate on a plate shaker at 150 rpm and 25°C for 45 minutes.
- Wash as detailed above.
- Strike the wells sharply onto absorbent paper or paper towels to remove residual droplets.
- Dispense 100 μl of TMB into each well.
- Incubate on an orbital micro-plate shaker at 150 rpm at 25°C for 20 minutes.
- After 20-minutes, stop the reaction by adding 100 μl of Stop solution to each well.
- Gently mix. It is important to make sure that all the blue color changes to yellow.
- Read absorbance at 450 nm with a plate reader within 5 minutes.

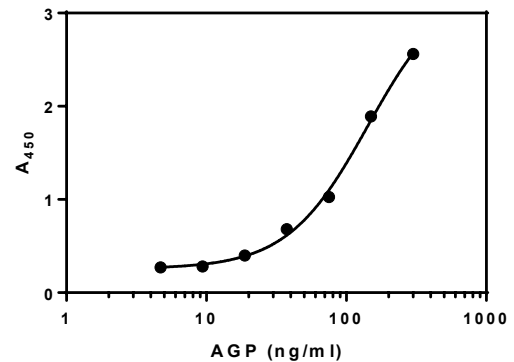
CALCULATION OF RESULTS

- Using curve fitting software, construct a standard curve by plotting absorbance values of the standards versus \log_{10} of the concentration.
- Fit the standard curve to a four-parameter logistic regression (4PL) equation (x axis = \log_{10} concentration) and determine the concentration of the samples from the standard curve (remember to derive the concentration from the antilog).
- Multiply the derived concentration by the dilution factor to determine the actual concentration in the serum or plasma sample.
- If the A_{450} values of samples fall outside the standard curve, samples should be diluted appropriately and re-tested.

TYPICAL STANDARD CURVE

A typical standard curve is shown below. This curve is for illustration only and should not be used to calculate unknowns. Each user should obtain his or her data and standard curve in each experiment.

AGP (ng/ml)	Absorbance (450 nm)
300	2.561
150	1.890
75	1.026
37.5	0.680
18.8	0.399
9.4	0.281
4.7	0.270



Rev 11022020

For technical assistance please email us at techsupport@lifediagnosics.com