

RayBio[®] Human/Mouse/Rat Neuropeptide Y Enzyme Immunoassay Kit

Catalog #: EIA-NPY, EIAM-NPY, EIAR-NPY

User Manual
Last revised August 7, 2017

Caution:
Extraordinarily useful information enclosed



ISO 13485 Certified

3607 Parkway Lane, Suite 100
Norcross, GA 30092

Tel: 1-888-494-8555 (Toll Free) or 770-729-2992, Fax: 770-206-2393
Web: www.RayBiotech.com, Email: info@raybiotech.com

Table of Contents

Section	Page #
I.	Introduction
II.	General Description
III.	How It Works
IV.	Storage
V.	Reagents
VI.	Additional Materials Required
VII.	Reagent Preparation
	A. Preparation of Plate and Anti-NPY Antibody
	B. Preparation of Biotinylated Peptide (Item F)
	C. Preparation of Standards
	D. Preparation of Positive Control
	E. Preparation of Samples
	F. Preparation of Wash Buffer and HRP-Strep
VIII.	Assay Procedure
IX.	Assay Procedure Summary
X.	Calculation of Results
	A. Typical Data
	B. Sensitivity
	C. Standard Curve Range
	D. Reproducibility
	E. Assay Diagram
XI.	Specificity
XII.	Select Publications
XIII.	Troubleshooting Guide

Please read the entire manual carefully before starting your experiment

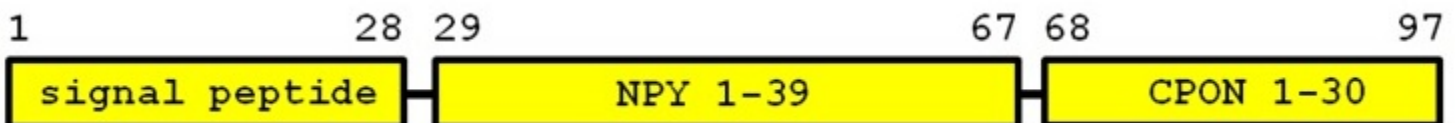
I. Introduction

Neuropeptide Y (NPY) is a 36 amino acid peptide hormone found in the neural system and has an important role in obesity.

The main effect of Neuropeptide Y is increased food intake and decreased physical activity. It also increases the proportion of energy stored as fat and blocks nociceptive signals to the brain. In addition to its role in obesity, Neuropeptide Y has been associated with a number of other physiologic processes in the brain, including the regulation of energy balance, memory and learning, and epilepsy.

Animal studies strongly demonstrate that the stimulation of Neuropeptide Yergic activity via the administration of certain Neuropeptide Y agonists increases food intake compared to control animals. The effects of Neuropeptide Yergic activity on food intake is also demonstrated by the blockade of certain Neuropeptide Y receptors (Y1 and Y5 receptors), which expectedly inhibited Neuropeptide Yergic activity; thus, decreases food intake. For its role in obesity, an increase in Neuropeptide Y is caused by high levels of glucocorticosteroids through directly activating type II glucocorticosteroids receptors and indirectly, by abolishing the negative feedback of CRF on Neuropeptide Y synthesis and release. Meanwhile, obesity-induced insulin resistance and the mutation of the leptin receptor (ObRb) results in the abolishment of other negative feedback mechanisms to regulate Neuropeptide Yergic activity and ultimately food intake. High levels of Neuropeptide Y were also found in the cerebrospinal fluid of patients with anorexia nervosa.

The 291 bp coding sequence of the NPY gene synthesizes the pre-pro form of NPY, a 97 aa precursor peptide (see diagram below). Cleavage of the n-terminal 29 aa results in pro-NPY (69 aa), which then undergoes a further cleavage, yielding NPY 1-39 along with the 30-aa C-terminal peptide known as C-flanking peptide of NPY (CPON). NPY 1-39 is further processed to the mature form (NPY 1-36). The function of CPON is not currently understood. This EIA kit is designed to detect active NPY (1-36).

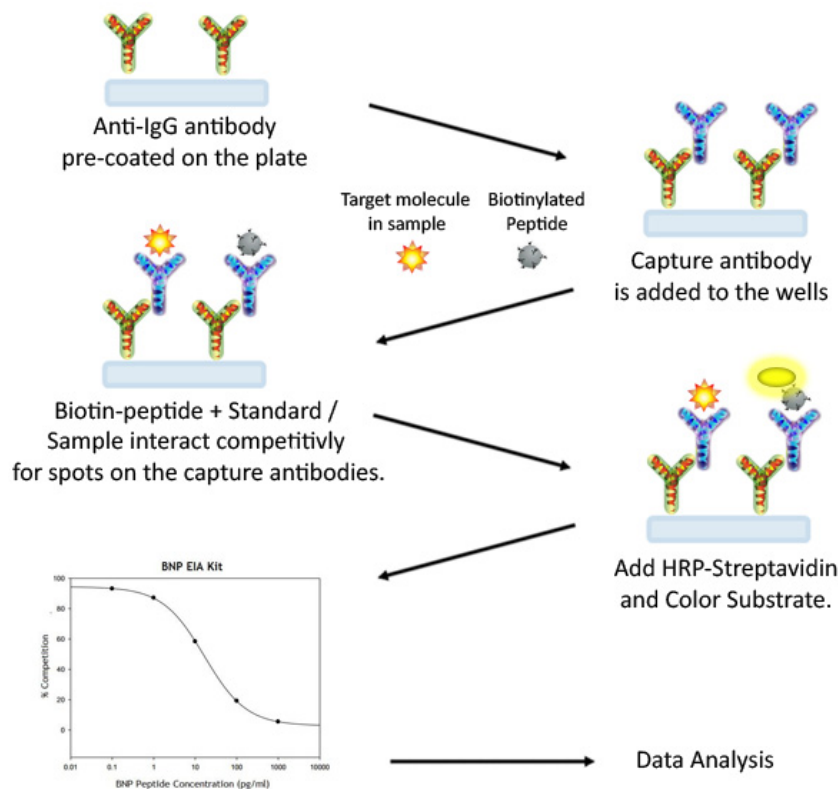


II. General Description

The RayBio® NPY Enzyme Immunoassay (EIA) Kit is an in vitro quantitative assay for detecting NPY peptide based on the competitive enzyme immunoassay principle.

In this assay, a biotinylated NPY peptide is spiked into the samples and standards. The samples and standards are then added to the plate, where the biotinylated NPY peptide competes with endogenous (unlabeled) NPY for binding to the anti-NPY antibody. After a wash step, any bound biotinylated NPY then interacts with horseradish peroxidase (HRP)-streptavidin, which catalyzes a color development reaction. The intensity of the colorimetric signal is directly proportional to the amount of captured biotinylated NPY peptide and inversely proportional to the amount of endogenous NPY in the standard or samples. A standard curve of known concentration of NPY peptide can be established and the concentration of NPY peptide in the samples can be calculated accordingly.

III. How It Works



IV. Storage

The entire kit may be stored at -20°C to -80°C for up to 6 months from the date of shipment. For extended storage, it is recommended to store at -80°C. **Avoid repeated freeze-thaw cycles.** For prepared reagent storage, see table below.

V. Reagents

Component	Size / Description	Storage / Stability After Preparation
EIA Microplate (Item A)	96 wells (12 strips x 8 wells) coated with secondary antibody.	1 month at 4°C*
Wash Buffer Concentrate (20X) (Item B)	25 ml of 20X concentrated solution.	1 month at 4°C
Standard NPY Peptide (Item C)	2 vials of Lyophilized NPY Peptide. 1 vial is enough to run each standard in duplicate.	Do not store and reuse
Anti-NPY Polyclonal Antibody (Item N)	2 vials of Lyophilized anti-NPY.	Do not store and reuse
5X Assay Diluent B (Item E)	15 ml of 5X concentrated buffer. Diluent for both standards and samples including serum, plasma, cell culture media or other sample types.	1 month at 4°C
Biotinylated NPY Peptide (Item F)	2 vials of Lyophilized Biotinylated NPY Peptide, 1 vial is enough to assay the whole plate.	Do not store and reuse
HRP-Streptavidin Concentrate (Item G)	600 µl 200X concentrated HRP-conjugated streptavidin.	Do not store and reuse
Positive Control (Item M)	1 vial of Lyophilized Positive Control.	Do not store and reuse
TMB One-Step Substrate Reagent (Item H)	12 ml of 3,3',5,5'-tetramethylbenzidine (TMB) in buffer solution.	N/A
Stop Solution (Item I)	8 ml of 0.2 M sulfuric acid.	N/A

*Return unused wells to the pouch containing desiccant pack, reseal along entire edge.

VI. Additional Materials Required

1. Microplate reader capable of measuring absorbance at 450 nm
2. Precision pipettes to deliver 2 μ l to 1 ml volumes
3. Adjustable 1-25 ml pipettes for reagent preparation
4. 100 ml and 1 liter graduated cylinders
5. Absorbent paper
6. Distilled or deionized water
7. SigmaPlot software (or other software which can perform four-parameter logistic regression models)
8. Tubes to prepare standard or sample dilutions
9. Orbital shaker
10. Aluminum foil
11. Plastic wrap

VII. Reagent Preparation

Keep kit reagents on ice during reagent preparation steps.

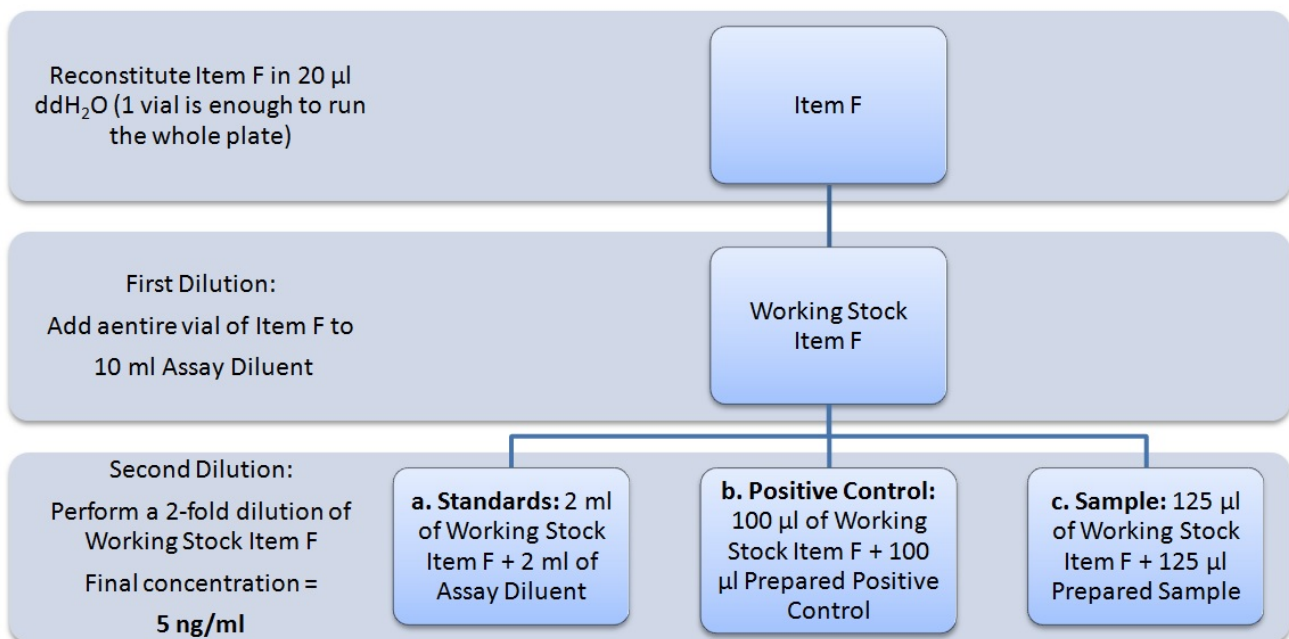
A. Preparation of Plate and Anti-NPY Antibody

1. Equilibrate plate to room temperature before opening the sealed pouch.
2. Label removable 8-well strips as appropriate for your experiment.
3. 5X Assay Diluent B (Item E) should be diluted 5-fold with deionized or distilled water.
4. Briefly centrifuge the anti-NPY antibody vial (Item N) and reconstitute with 55 μ l of 1X Assay Diluent B to prepare the antibody concentrate. Pipette up and down to mix gently.
5. The antibody concentrate should then be diluted 100-fold with 1X Assay Diluent B. This is your anti-NPY antibody working solution, which will be used in step 2 of Assay Procedure (Section VIII).

Note: The following steps may be done during the antibody incubation procedure (step 2 of Assay Procedure)

B. Preparation of Biotinylated NPY (Item F)

6. Briefly centrifuge the vial of Biotinylated NPY (Item F) and reconstitute with 20 μ l of ddH₂O before use.
7. See the image below for proper preparation of Item F. Transfer the entire contents of the Item F vial into a tube containing 10 ml of 1X Assay Diluent B. This is your Working Stock of Item F. Pipette up and down to mix gently.
The final concentration of biotinylated NPY will be 10 ng/ml.
 - a. Second Dilution of Item F for Standards: Add 2 ml of Working Stock Item F to 2 ml of 1X Assay Diluent B. The final concentration of biotinylated NPY will be **5 ng/ml**.
 - b. Second Dilution of Item F for Positive Control: Add 100 μ l of Working Stock Item F to 100 μ l of the prepared Positive Control (Item M). (See section D for Positive Control preparation) The final concentration of biotinylated NPY will be **5 ng/ml**.
 - c. Second Dilution of Item F for samples: Add 125 μ l of Working Stock Item F to 125 μ l of prepared sample (see section E for sample preparation). This is a 2-fold dilution of your sample. The final concentration of biotinylated NPY will be **5 ng/ml**.

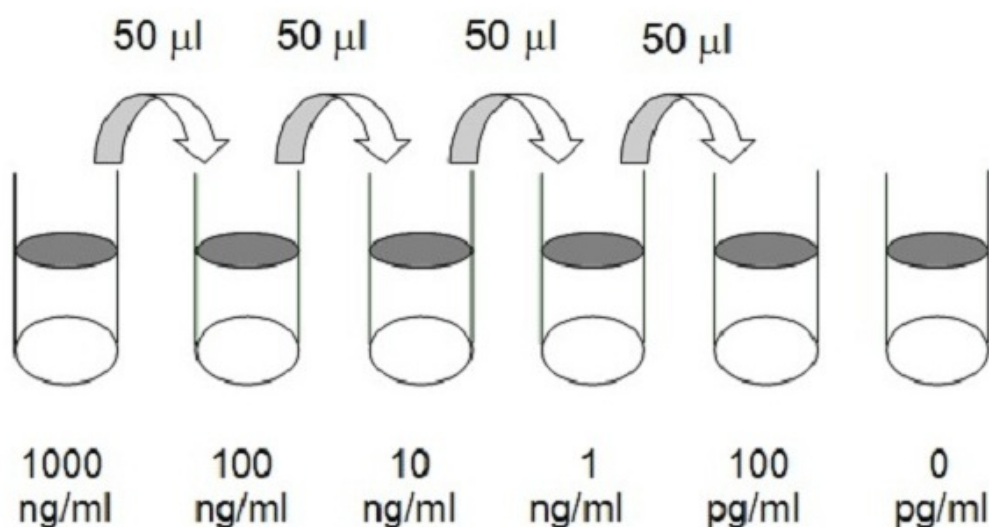


C. Preparation of Standards

8. Label 6 microtubes with the following concentrations: 1,000 ng/ml, 100 ng/ml, 10 ng/ml, 1 ng/ml, 100 pg/ml and 0 pg/ml. Pipette 450 μ l of biotinylated NPY Item F working solution (prepared in step 7a) into each tube, except the 1,000 ng/ml (leave this one empty).

It is very important to make sure the concentration of biotinylated NPY is 5 ng/ml in all standards.

9. Briefly centrifuge the vial of NPY Standard (Item C). Reconstitute with 10 μ l of ddH₂O and briefly vortex if desired. Pipette 8 μ l of Item C and 792 μ l of 5 ng/ml biotinylated NPY working solution (prepared in step 7a) into the tube labeled 1000 ng/ml. Mix thoroughly. This solution serves as the first standard (1,000 ng/ml NPY standard, 5 ng/ml biotinylated NPY).
10. To make the 100 ng/ml standard, pipette 50 μ l of the 1000 ng/ml NPY standard into the tube labeled 100 ng/ml. Mix thoroughly.
11. Repeat this step with each successive concentration, preparing a dilution series as shown in the illustration below. Each time, use 450 μ l of biotinylated NPY and 50 μ l of the prior concentration until the 100 pg/ml is reached. Mix each tube thoroughly before the next transfer.



D. Positive Control Preparation

12. Briefly centrifuge the Positive Control vial (Item M) and reconstitute with 100 μ l of ddH₂O.
13. Refer to step 7b. This is a 2-fold dilution of the Positive Control. The final concentration of biotinylated NPY should still be 5 ng/ml.

The Positive Control is a mouse serum sample that serves as a system control to verify that the kit components are working. The resulting OD will not be used in any calculations; if no positive competition is observed please contact RayBiotech Technical Support. The Positive Control may be diluted further if desired, but be sure the final concentration of biotinylated NPY is 5 ng/ml.

E. Sample Preparation

14. If you wish to perform a 2-fold dilution of your sample, proceed to step 7c. If you wish to perform a higher dilution of your sample, dilute your sample with 1X Assay Diluent B before performing step 7c.
EXAMPLE (to make a 4-fold dilution of sample):
 - a. Dilute sample 2-fold (62.5 μ l of sample + 62.5 μ l of 1X Assay Diluent B.).
 - b. Perform step 7c (125 μ l of working solution Item F + 125 μ l of sample prepared above).

The total volume is 250 μ l, enough for duplicate wells on the microplate. It is very important to make sure the final concentration of the biotinylated NPY is **5 ng/ml**.

Note: Optimal sample dilution factors should be determined empirically, however you may reference below for recommended dilution factors for serum:

Human=2X Mouse=2X Rat=8X.

If you have any questions regarding the recommended dilutions you may contact technical support at 888-494-8555 or techsupport@raybiotech.com.

F. Preparation of Wash Buffer and HRP

15. If Item B (20X Wash Concentrate) contains visible crystals, warm to room temperature and mix gently until dissolved.
16. Dilute 20 ml of Wash Buffer Concentrate into deionized or distilled water to yield 400 ml of 1X Wash Buffer.
17. Briefly centrifuge the HRP-Streptavidin vial (Item G) before use.
18. Dilute the HRP-Streptavidin concentrate 200-fold with 1X Assay Diluent B.

VIII. Assay Procedure

1. Keep kit reagents on ice during reagent preparation steps. It is recommended that all standards and samples be run at least in duplicate.
2. Add 100 µl of Anti-NPY Antibody (Item N) (See Reagent Preparation step 5) to each well. Incubate for 1.5 hours at room temperature with gentle shaking (1-2 cycle/sec). You may also incubate overnight at 4°C.
3. Discard the solution and wash wells 4 times with 1X Wash Solution Buffer (200-300 µl each). Washing may be done with a multichannel pipette or an automated plate washer. Complete removal of liquid at each step is essential to good assay performance. After the last wash, remove any remaining Wash Buffer by aspirating or decanting. Invert the plate and blot it against clean paper towels.
4. Add 100 µl of each standard (see Reagent Preparation Section C), Positive Control (see Reagent Preparation Section D) and sample (see Reagent Preparation Section E) to appropriate wells. Be sure to include a blank well (Assay Diluent only). Cover wells and incubate for 2.5 hours at room temperature with gentle shaking (1-2 cycles/sec) overnight or at 4°C.
5. Discard the solution and wash 4 times as directed in Step 3.
6. Add 100 µl of prepared HRP-Streptavidin solution (see Reagent Preparation step 18) to each well. Incubate for 45 minutes at room temperature with gentle shaking. It is recommended that incubation time should not be shorter or longer than 45 minutes.

7. Discard the solution and wash 4 times as directed in Step 3.
8. Add 100 µl of TMB One-Step Substrate Reagent (Item H) to each well. Incubate for 30 minutes at room temperature in the dark with gentle shaking (1-2 cycles/sec).
9. Add 50 µl of Stop Solution (Item I) to each well. Read at 450 nm immediately.

IX. Assay Procedure Summary

1. Prepare all reagents, samples and standards as instructed.
2. Add 100 µl anti-NPY to each well. Incubate 1.5 hours at room temperature or overnight at 4°C.
3. Add 100 µl standard or sample to each well. Incubate 2.5 hours at room temperature or overnight at 4°C.
4. Add 100 µl prepared Streptavidin solution. Incubate 45 minutes at room temperature.
5. Add 100 µl TMB One-Step Substrate Reagent to each well. Incubate 30 minutes at room temperature.
6. Add 50 µl Stop Solution to each well. Read at 450 nm immediately.

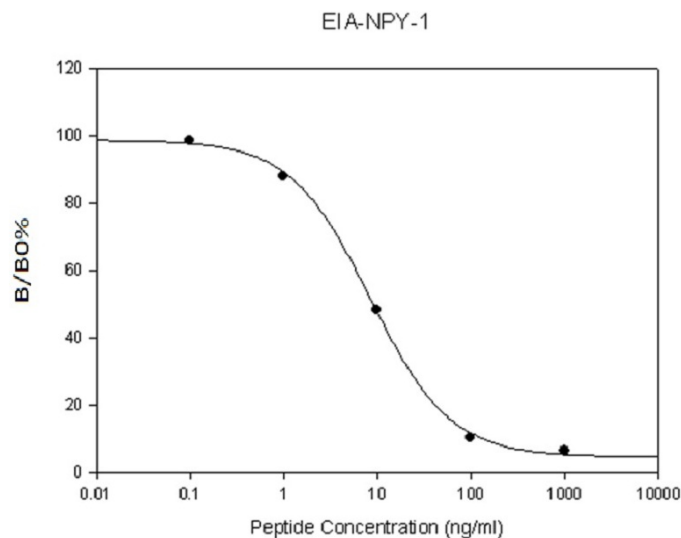
X. Calculation of Results

Calculate the mean absorbance for each set of duplicate stands, controls, and samples and subtract the blank optical density. Plot the standard curve using SigmaPlot software (or other software which can perform four-parameter logistic regression models), with standard concentration on the x-axis and percentage of absorbance (see calculation below) on the y-axis. Draw the best-fit curve through the standard points.

Percentage absorbance = $(B - \text{blank OD}) / (B_0 - \text{blank OD})$ where
B = OD of sample or standard and
 B_0 = OD of zero standard (total binding)

A. Typical Data

These standard curves are for demonstration only. A standard curve must be run with each assay.



B. Sensitivity

The minimum detectable concentrations of NPY is 0.2 ng/ml.

C. Standard Curve Range

0.1-1,000 ng/ml

D. Reproducibility

Intra-Assay: CV<10%

Inter-Assay: CV<15%

E. Assay Diagram

Recommended Plate Layout:

Blank	Blank	SA1	SA1	SA9	SA9	SA17	SA17	SA25	SA25	SA33	SA33
Total Binding	Total Binding	SA2	SA2	SA10	SA10	SA18	SA18	SA26	SA26	SA34	SA34
Standard1	Standard1	SA3	SA3	SA11	SA11	SA19	SA19	SA27	SA27	SA35	SA35
Standard2	Standard2	SA4	SA4	SA12	SA12	SA20	SA20	SA28	SA28	SA36	SA36
Standard3	Standard3	SA5	SA5	SA13	SA13	SA21	SA21	SA29	SA29	SA37	SA37
Standard4	Standard4	SA6	SA6	SA14	SA14	SA22	SA22	SA30	SA30	SA38	SA38
Standard5	Standard5	SA7	SA7	SA15	SA15	SA23	SA23	SA31	SA31	SA39	SA39
Pos Control	Pos Control	SA8	SA8	SA16	SA16	SA24	SA24	SA32	SA32	SA40	SA40

Key:

Blank = Buffer Only

Total Binding = Biotin- NPY only

Standard 1 = 1000 ng/ml

Standard 2 = 100 ng/ml

Standard 3 = 10 ng/ml

Standard 4 = 1 ng/ml

Standard 5 = 100 pg/ml

Pos Control = Biotin with Item M

XI. Specificity

This EIA kit is designed to detect human, mouse, and rat active NPY (1-36).

XIV. Select EIA Publications

1. Plum L, Lin HV, Dutia R, Tanaka J, Aizawa KS, et al. The Obesity Susceptibility Gene Carboxypeptidase E Links FoxO1 Signaling in Hypothalamic Pro-opiomelanocortin Neurons with Regulation of Food Intake. *Nature Med.* 2009;15(10):1195-1201. (Ghrelin EIA, EIA-GHR-1)
2. Hug C, Lodish HF. Visfatin: a new adipokine. *Science.* 2005; 307(5708):366-7.
3. Kim MK. Crystal structure of visfatin/pre-B cell colony-enhancing factor 1/nicotinamide phosphoribosyltransferase, free and in complex with the anti-cancer agent FK-866. *J Mol Biol.* 2006; 362(1):66-77.
4. Revollo, J.R., et al. The NAD biosynthesis pathway mediated by nicotinamide phosphoribosyltransferase regulates Sir2 activity in mammalian cells. *J. Biol. Chem.* 2004; 279: 50754-50763.
5. Oh-I S, Shimizu H, Satoh T, et al. Identification of nesfatin-1 as a satiety molecule in the hypothalamus. *Nature* 2006; 443 (7112): 709-12.
6. Zhang J, Ren P, Avsian-Kretchmer O, Luo C, Rauch R, Klein C, Hsueh A. Obestatin, a peptide encoded by the ghrelin gene, opposes ghrelin's effects on food intake. *Science* 2005; 310 (5750): 996-9.
7. Cummings D, Weigle D, Frayo R, Breen P, Ma M, Dellinger E, Purnell J. Plasma ghrelin levels after diet-induced weight loss or gastric bypass surgery. *N Engl J Med* 2002; 346 (21): 1623-30.
8. Tschop M, Smiley DL, Heiman ML. Ghrelin induces adiposity in rodents. *Nature* 2002; 407 (6806): 908-913. 9. Kojima M, Hosoda H, Date Y, Nakazato M, Matsuo H, Kangawa K. Ghrelin is a growth-hormone-releasing acylated peptide from stomach. *Nature* 1999; 402 (6762): 656-60.

XIII. Troubleshooting Guide

Problem	Cause	Solution
Poor standard curve	<ul style="list-style-type: none"> ○ Inaccurate pipetting ○ Improper standard dilution 	<ul style="list-style-type: none"> ○ Check pipettes ○ Briefly centrifuge Item C and dissolve the powder thoroughly by gently mixing
Low signal	<ul style="list-style-type: none"> ○ Improper preparation of standard and/or biotinylated antibody ○ Too brief incubation times ○ Inadequate reagent volumes or improper dilution 	<ul style="list-style-type: none"> ○ Briefly spin down vials before opening. Dissolve the powder thoroughly. ○ Ensure sufficient incubation time; assay procedure step 2 may be done overnight ○ Check pipettes and ensure correct preparation
Large CV	<ul style="list-style-type: none"> ○ Inaccurate pipetting ○ Air bubbles in wells 	<ul style="list-style-type: none"> ○ Check pipettes ○ Remove bubbles in wells
High background	<ul style="list-style-type: none"> ○ Plate is insufficiently washed ○ Contaminated wash buffer 	<ul style="list-style-type: none"> ○ Review the manual for proper wash. If using a plate washer, ensure that all ports are unobstructed. ○ Make fresh wash buffer
Low sensitivity	<ul style="list-style-type: none"> ○ Improper storage of the ELISA kit ○ Stop solution 	<ul style="list-style-type: none"> ○ Follow storage recommendations in sections IV and V. Keep substrate solution protected from light. ○ Add stop solution to each well before reading plate

RayBio[®] ELISA Kits

Over 3,000 ELISA kits available, visit www.RayBiotech.com/ELISA-Kits.html for details.

This product is for research use only.



©2018 RayBiotech, Inc