

Quantibody[®] Mouse Cytokine Array 10

Quantitative measurement of 40 Mouse cytokines

Catalog #: QAM-CYT-10

User Manual

Last revised July 18, 2019

Caution:
Extraordinarily useful information enclosed



ISO 13485 Certified

3607 Parkway Lane, Suite 100
Norcross, GA 30092

Tel: 1-888-494-8555 (Toll Free) or 770-729-2992, Fax: 770-206-2393

Web: www.RayBiotech.com, Email: info@raybiotech.com

Table of Contents

Section		Page #
I.	Overview	3
II.	Introduction	3
III.	How It Works	5
IV.	Materials Provided	6
V.	Storage	6
VI.	Additional Materials Required	6
VII.	General Considerations	7
	A. Sample Preparation	7
	B. Handling Glass Slides	7
	C. Incubation	7
VIII.	Protocol	8
	A. Completely Air Dry The Glass Slide	8
	B. Prepare Cytokine Standard Dilutions	8
	C. Blocking & Incubation	9
	D. Incubation with Biotinylated Antibody Cocktail & Wash	10
	E. Incubation with Cy3 Equivalent Dye-Streptavidin & Wash	10
	F. Fluorescence Detection	11
	G. Data Analysis	12
IX.	Array Map & Standard Curves	13
X.	Standard Concentrations	14
XI.	Spiking & Recovery	15
XII.	Q-Analyzer: Data Analysis Software	16
XIII.	Troubleshooting Guide	17
XIV.	Select Publications	18
XV.	Experiment Record Form	19
XVI.	How To Choose A Quantibody®	20

Please read the entire manual carefully before starting your experiment

I. Overview

Cytokines Detected (40)	ADAM9, CD14, CD39L3, CDNF, Cripto, CXCL14, Epimorphin, Erythropoietin R, Flt-3, Follistatin, Frizzled-1, Frizzled-4, FSTL1, GDF-3, GDF-7, GFR alpha-3, IFN-gamma R2, IL-1 RI, IL-1 RII, IL-10 R beta, IL-11 R alpha, IL-15 R alpha, IL-17 RA, IL-17 RC, IL-20 R beta, IL-1F8, IL-21 R, IL-23 R, IL-28A, JAM-C, Klotho beta, Layilin, LDL R, LIF, Matrilin-3, Lymphotoxin beta R, Nephrin, Neurocan, NKp46, Laminin alpha 4 <i>See Section IX for Array Map</i>
Format	One standard glass slide is spotted with 16 wells of identical cytokine antibody arrays. Each antibody is arrayed in quadruplicate.
Detection Method	Fluorescence. Go to www.RayBiotech.com/Scanners for a list of compatible laser scanners.
Sample Volume	50 - 100 µl per array
Reproducibility	CV <20%
Assay Duration	6 hours

II. Introduction

Cytokines play an important role in innate immunity, apoptosis, angiogenesis, cell growth and differentiation. They are involved in interactions between different cell types, cellular responses to environmental conditions, and maintenance of homeostasis. In addition, cytokines are also involved in most disease processes, including cancer and cardiac diseases.

The traditional method for cytokine detection and quantification is through the use of an enzyme-linked immunosorbent assay (ELISA). In this method, target protein is immobilized to a solid support. The immobilized protein is then complexed with an antibody that is linked to an enzyme. Detection of the enzyme complex can then be visualized through the use of a substrate that produces a detectable signal. While this traditional method works well for a single protein, the overall procedure is time consuming and requires a relatively high volume of sample. Thus, conservation of precious small sample quantities becomes a challenging task. Innovations in microarray technology over the last decade have addressed

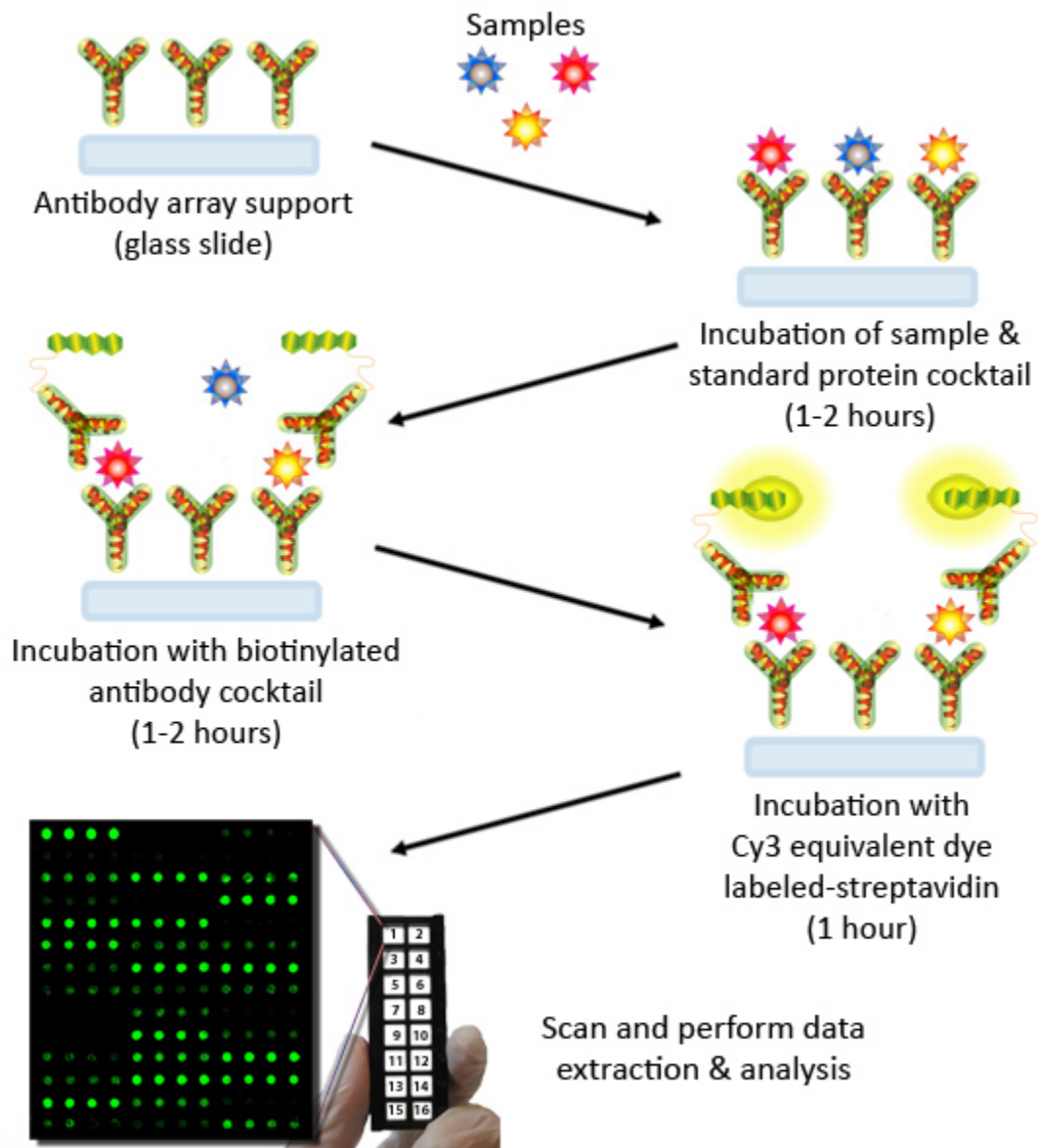
this problem. A long-standing leader in the field, Raybiotech, has pioneered the development of cytokine antibody arrays, which have now been widely applied in the research community with hundreds of peer reviewed publications, including top-tier journals such as *Cell* and *Nature*.

The Quantibody[®] array, our multiplexed sandwich ELISA-based quantitative array platform, enables researchers to accurately determine the concentration of multiple cytokines simultaneously. It combines the advantages of the high detection sensitivity & specificity of ELISA and the high throughput of arrays. Like a traditional sandwich-based ELISA, it uses a pair of cytokine specific antibodies for detection. A capture antibody is first bound to the glass surface. After incubation with the sample, the target cytokine is trapped on the solid surface. A second biotin-labeled detection antibody is then added, which can recognize a different epitope of the target cytokine. The cytokine-antibody-biotin complex can then be visualized through the addition of the streptavidin-conjugated Cy3 equivalent dye, using a laser scanner. Unlike the traditional ELISA, Quantibody products use an array format. By arraying multiple cytokine specific capture antibodies onto a glass support, quantitative, multiplex detection of cytokines in one experiment is made possible.

In detail, one standard glass slide is divided into 16 wells of identical cytokine antibody arrays. Each antibody, together with the positive controls is arrayed in quadruplicate. The slide comes with a 16-well removable gasket which allows for the process of 16 samples on one slide. Four slides can be nested into a tray, which matches a standard microplate footprint and allows for automated robotic high throughput process of 64 arrays simultaneously. For cytokine quantification, the array specific cytokine standards, whose concentration has been predetermined, are provided to generate a standard curve for each cytokine. In a real experiment, standard cytokines and samples will be assayed in each array simultaneously through a sandwich ELISA procedure. By comparing signals from unknown samples to the standard curve, the cytokine concentration in the samples will be determined.

Quantibody[®] array kits have been confirmed to have similar detection sensitivity as traditional ELISA. Our current high density Quantibody kits allow scientists to quantitatively determine the concentration of 1000 human, 200 mouse, and 67 rat cytokines in a single experiment. This is not only one of the most efficient products on the market for cytokine quantification, but makes it more affordable for quantification of large number of proteins. Simultaneous detection of multiple cytokines undoubtedly provides a powerful tool for drug and biomarker discovery.

III. How It Works



IV. Materials Provided

	Catalog #	Component Name	1 Slide Box	2 Slide Box*
1	QAM-CYT-10 S	Mouse Cytokine Array 10 Glass Slide	1	2
2	QA-SDB	Quantibody [®] Sample Diluent	15 ml	
3	AA-WB1-30ML	20X Wash Buffer I	2 x 30 ml	3 x 30 ml
4	AA-WB2-30ML	20X Wash Buffer II	30 ml	
5	QAM-CYT-10 -STD	Mouse Cytokine Array 10 Lyophilized Standard Mix**	1 Vial	
6	QAM-CYT-10 B	Mouse Cytokine Array 10 Biotinylated Antibody Cocktail	1-25 µl	2 x 1-25 µl
7	QA-CY3E	Cy3 equivalent dye-conjugated Streptavidin	5 µl	2 x 5 µl
8	QA-SWD	Slide Washer/Dryer	1 x 30 ml Tube	
9	QA-ADH	Adhesive Film	1	2

* 4 slide kits are comprised of 2 separate 2 slide kits.

** See Section X for detailed cytokine concentrations after reconstitution.

V. Storage

Upon receipt, all components should be stored at -20°C. The kit will retain activity for up to 6 months. Once thawed, the glass slide, standard mix, antibody cocktail and dye-conjugated Streptavidin should be kept at -20°C. All other components may be stored at 4°C. The entire kit should be used within 6 months of purchase.

VI. Additional Materials Required

- Benchtop rocker or orbital rocker
- Laser scanner for fluorescence detection
- Aluminum foil
- Distilled water
- 1.5 ml Polypropylene microcentrifuge tubes

VII. General Considerations

A. Preparation of Samples

- Use serum-free conditioned media if possible.
- If serum-containing conditioned media is required, it is highly recommended that complete medium be used as a control since many types of sera contains cytokines.
- Each array needs 100 µl of total sample volume. To avoid matrix effects, we recommend using a minimum of 2-fold sample dilution of culture media, body fluids, or 0.5-1mg/ml total protein for lysates, after a 5-fold to 10-fold dilution to minimize the effects of any detergent(s). Please be aware, more sample volume is required for combination arrays. For example, the minimum sample volume for a 10-array kit is 500 µl, or 500 µg lysate.
- The suggested serum/plasma dilution for this array is: 2x

B. Handling Glass Slides

- Do not touch the surface of the slides, as the microarray slides are very sensitive. Hold the slides by the edges only.
- Handle all buffers and slides with powder free gloves.
- Handle glass slide/s in clean environment.
- Permanent marker ink can significantly interfere with fluorescent signal detection. To help distinguish one slide from another, you may make a small marking (such as a number or a star) along the top or bottom edge, using a green or blue ultra-fine point Sharpie® brand marker. This can also serve to orient the slide. For best results during scanning, please **DO NOT**:
 - Write anywhere on the front (arrayed) side of the slide
 - Write on the slide while it is wet
 - Use red or black colored ink anywhere on the slide
 - Write over the arrayed well areas of the slide, as this interferes with scanning.

C. Incubation

- Completely cover array area with sample or buffer during incubation.
- Avoid foaming during incubation steps.
- Perform all incubation and wash steps under gentle rocking or rotation.
- Cover the incubation chamber with adhesive film during incubation, particularly when incubation is more than 2 hours or <70 µl of sample or reagent is used.

- Several incubation steps such as step 6 (blocking), step 7 (sample incubation), step 10 (detection antibody incubation), or step 13 (Cy3 equivalent dye-streptavidin incubation) may be done overnight at 4°C. Please make sure to cover the incubation chamber tightly to prevent evaporation.

VIII. Protocol

A. Completely Air Dry The Glass Slide

1. Take out the glass slide from the box, and let it equilibrate to room temperature inside the sealed plastic bag for 20-30 minutes. Remove slide from the plastic bag, peel off the cover film, and let it air dry for another 1-2 hours.

Incomplete drying of slides before use may cause the formation of "comet tails," thin directional smearing of antibody spots.

B. Prepare Cytokine Standard Dilutions

There is only one vial of standard provided in the two-slide kit, which is enough for making two standard curves. Reconstitute the lyophilized standard within one hour of usage. If you must use the standard for two different days, store only the Std1 dilution at -80°C.



2. Reconstitute the Cytokine Standard Mix (lyophilized) by adding 500 µl Sample Diluent to the tube. For best recovery, always quick-spin vial prior to opening. Dissolve the powder thoroughly by a gentle mix. Labeled the tube as Std1.

3. Label 6 clean microcentrifuge tubes as Std2 to Std7. Add 200 μ l Sample Diluent to each of the tubes.
4. Pipette 100 μ l Std1 into tube Std2 and mix gently. Perform 5 more serial dilutions by adding 100 μ l Std2 to tube Std3 and so on.
5. Add 100 μ l Sample Diluent to another tube labeled as CNTRL. Do not add standard cytokines or samples to the CNTRL tube, which will be used as negative control. For best results, include a set of standards in each slide.

Since the starting concentration of each cytokine is different, the serial concentrations from Std1 to Std7 for each cytokine are varied which can be found in Section X.

C. Blocking & Incubation

6. Add 100 μ l Sample Diluent into each well and incubate at room temperature for 30 minutes to block slides.
7. Decant buffer from each well. Add 100 μ l standard cytokines or samples to each well. Incubate arrays at room temperature for 1-2 hour.

Longer incubation time is preferable for higher signals. This step may be done overnight at 4°C.

We recommend using 50 to 100 μ l of original or diluted serum, plasma, conditioned media, or other body fluid, or 250 μ g/ml-1 mg/ml of protein for cell and tissue lysates. Cover the incubation chamber with adhesive film during incubation, especially if less than 70 μ l of sample or reagent is used.

8. Wash:
 - Decant the samples from each well, and wash 5 times (5 min each) with 150 μ l of 1X Wash Buffer I at room temperature with gentle rocking. Completely remove wash buffer in each wash step. Dilute 20x Wash Buffer I with H₂O.
 - *(Optional for Cell and Tissue Lysates)* Put the glass slide with frame into a box with 1X Wash Buffer I (cover the whole glass slide and frame with Wash Buffer

l), and wash at room temperature with gentle rocking for 20 min.

- Decant the 1x Wash Buffer I from each well, wash 2 times (5 min each) with 150 µl of 1X Wash Buffer II at room temperature with gentle rocking. Completely remove wash buffer in each wash step. Dilute 20X Wash Buffer II with H₂O.

Incomplete removal of the wash buffer in each wash step may cause "dark spots," the background signals higher than the spots.

D. Incubation with Biotinylated Antibody Cocktail & Wash

9. Reconstitute the detection antibody by adding 1.4 ml of Sample Diluent to the tube. Spin briefly.
10. Add 80 µl of the detection antibody cocktail to each well. Incubate at room temperature for 1-2 hour.

Longer incubation time is preferable for higher signals and backgrounds

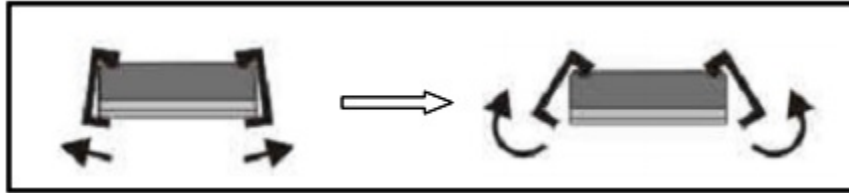
11. Decant the samples from each well, and wash 5 times (5 mins each) with 150 µl of 1X Wash Buffer I and then 2 times with 150 µl of 1x Wash Buffer II at room temperature with gentle rocking. Completely remove wash buffer in each wash step.

E. Incubation with Cy3 Equivalent Dye-Streptavidin & Wash

12. After briefly spinning down, add 1.4 ml of Sample Diluent to Cy3 equivalent dye-conjugated streptavidin tube. Mix gently.
13. Add 80 µl of Cy3 equivalent dye-conjugated streptavidin to each well. Cover the device with aluminum foil to avoid exposure to light or incubate in dark room. Incubate at room temperature for 1 hour.
Decant the samples from each well, and wash 5 times (5 mins each) with 150 µl of 1X Wash Buffer I at room temperature with gentle rocking. Completely remove wash buffer in each wash step.
14. µl of 1X Wash Buffer I at room temperature with gentle rocking. Completely remove wash buffer in each wash step.

F. Fluorescence Detection

15. Disassemble the device by pushing clips outward from the slide side. Carefully remove the slide from the gasket.



Be careful not to touch the surface of the array side.

16. Place the slide in the Slide Washer/Dryer (a 4-slide holder/centrifuge tube), add enough 1x Wash Buffer I (about 30 ml) to cover the whole slide, and then gently shake at room temperature for 15 minutes. Decant Wash Buffer I. Wash with 1x Wash Buffer II (about 30 ml) and gently shake at room temperature for 5 minutes.
17. Remove water droplets completely by gently applying suction with a pipette to remove water droplets. Do not touch the array, only the sides.

You may also dry the glass slide by a compressed N₂ stream.

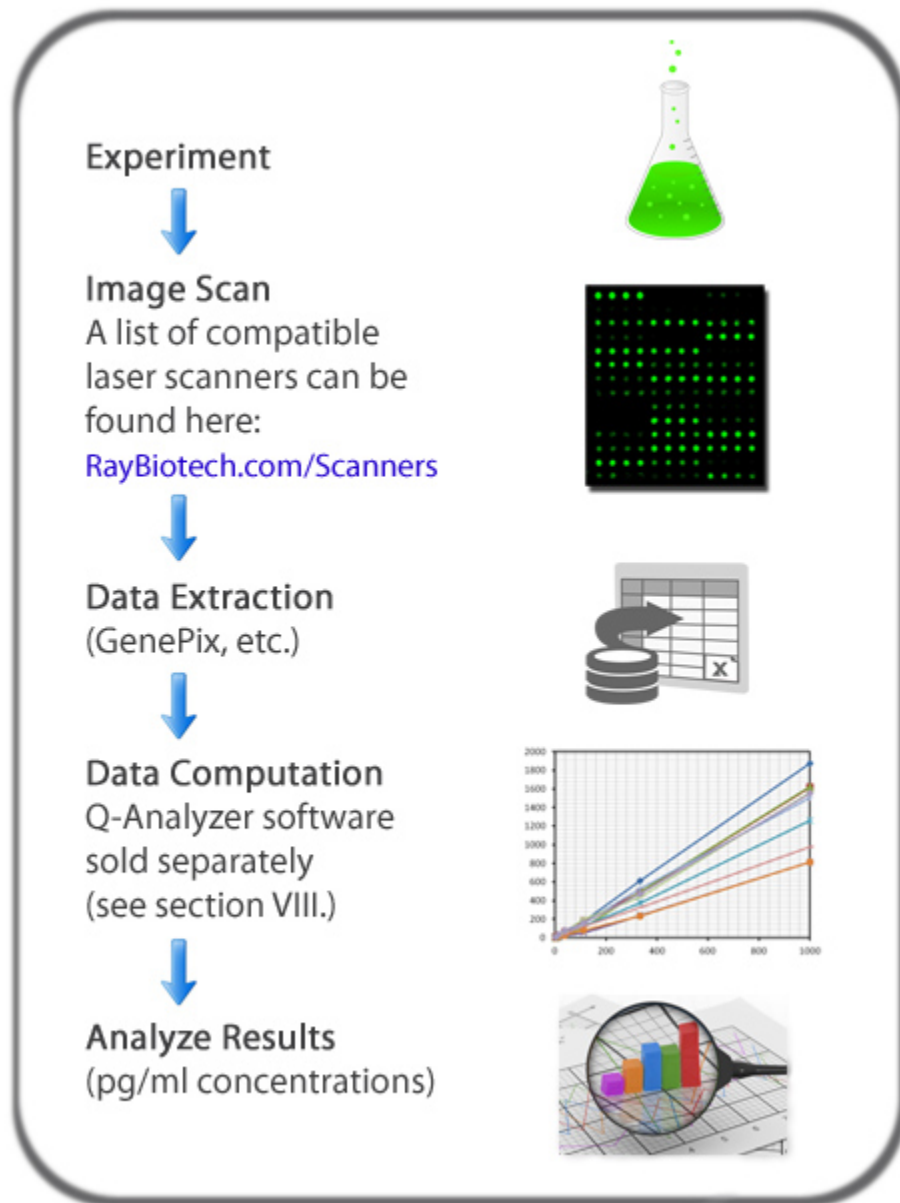
18. Imaging: The signals can be visualized through use of a laser scanner equipped with a Cy3 wavelength (green channel) such as Axon GenePix or Innopsys Innoscan. Make sure that the signal from the well containing the highest standard concentration (Std1) receives the highest possible reading, yet remains unsaturated.

In case the signal intensity for different cytokine varies greatly in the same array, we recommend using multiple scans, with a higher PMT for low signal cytokines, and a low PMT for high signal cytokines.

G. Data Analysis

19. Data extraction can be done using the GAL file that is specific for this array along with the microarray analysis software (GenePix, ScanArray Express, ArrayVision, MicroVigene, etc.). GAL files can be found here: www.RayBiotech.com/Gal-Files.html.

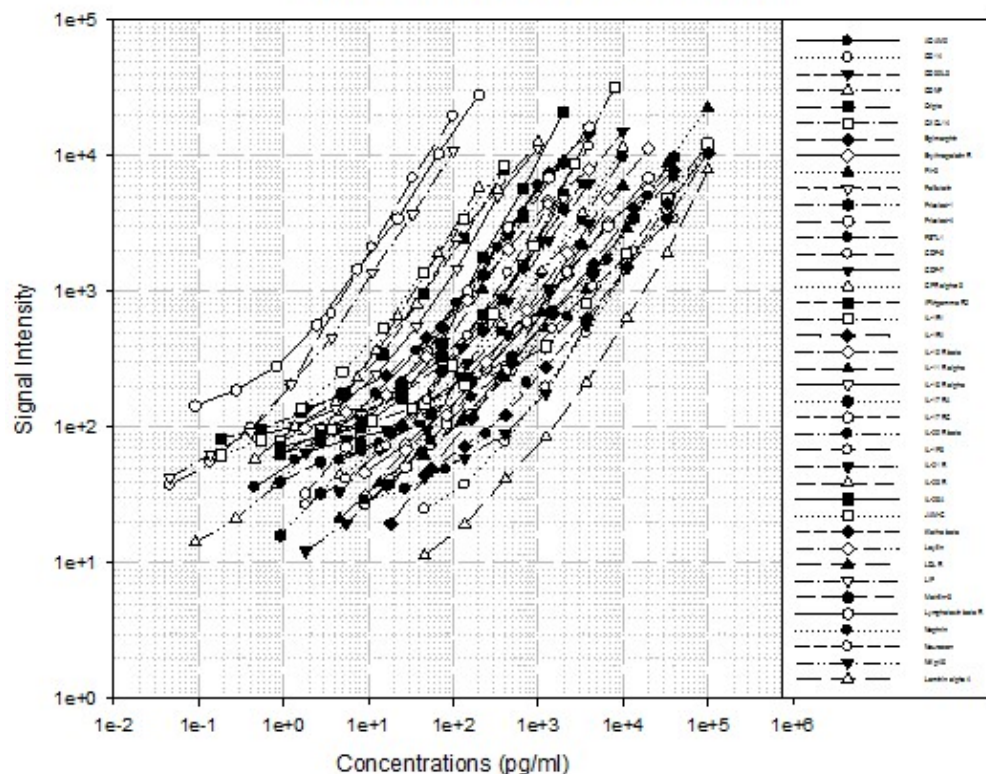
Need help analyzing all that data? Copy and paste your data into the Q-Analyzer Tool specific for this array, catalog number: **QAM-CYT-10-SW**. More information can be found in Section XII.



IX. Array Map & Standard Curves

(mCYT10 Map) Each antibody is printed in quadruplicate horizontally												
	1	2	3	4	1	2	3	4	1	2	3	4
A	POS1				POS2				ADAM9			
B	CD14				CD39L3				CDNF			
C	Cripto				CXCL14				Epimorphin			
D	Erythropoietin R				Flt-3				Follistatin			
E	Frizzled-1				Frizzled-4				FSTL1			
F	GDF-3				GDF-7				GFR alpha-3			
G	IFN-gamma R2				IL-1 RI				IL-1 RII			
H	IL-10 R beta				IL-11 R alpha				IL-15 R alpha			
I	IL-17 RA				IL-17 RC				IL-20 R beta			
J	IL-1F8				IL-21 R				IL-23 R			
K	IL-28A				JAM-C				Klotho beta			
L	Layilin				LDL R				LIF			
M	Matrilin-3				Lymphotoxin beta R				Nephrin			
N	Neurocan				NKp46				Laminin alpha 4			

QAM-CYT-10 Standard Curves



X. Standard Concentrations

After reconstitution, the lyophilized cytokine standard mix contains the following concentrations for each antigen included.

QAM-CYT-10 Serial Standard Concentrations (pg/ml)

(pg/ml)	Cntrl	Std7	Std6	Std5	Std4	Std3	Std2	Std1
ADAM9	0	1	4	12	37	111	333	1,000
CD14	0	137	412	1,235	3,704	11,111	33,333	100,000
CD39L3	0	14	41	123	370	1,111	3,333	10,000
CDNF	0	1.4	4.1	12.3	37.0	111.1	333.3	1,000
Cripto	0	14	41	123	370	1,111	3,333	10,000
CXCL14	0	11	33	99	296	889	2,667	8,000
Epimorphin	0	5	16	49	148	444	1,333	4,000
Erythropoietin R	0	27	82	247	741	2,222	6,667	20,000
Flt-3	0	137	412	1,235	3,704	11,111	33,333	100,000
Follistatin	0	3	8	25	74	222	667	2,000
Frizzled-1	0	55	165	494	1,481	4,444	13,333	40,000
Frizzled-4	0	27	82	247	741	2,222	6,667	20,000
FSTL1	0	14	41	123	370	1,111	3,333	10,000
GDF-3	0	55	165	494	1,481	4,444	13,333	40,000
GDF-7	0	5	16	49	148	444	1,333	4,000
GFR alpha-3	0	14	41	123	370	1,111	3,333	10,000
IFN-gamma R2	0	0.5	1.6	4.9	14.8	44.4	133.3	400
IL-1 RI	0	137	412	1,235	3,704	11,111	33,333	100,000
IL-1 RII	0	55	165	494	1,481	4,444	13,333	40,000
IL-10 R beta	0	27	82	247	741	2,222	6,667	20,000
IL-11 R alpha	0	3	8	25	74	222	667	2,000
IL-15 R alpha	0	1	4	12	37	111	333	1,000
IL-17 RA	0	3	8	25	74	222	667	2,000
IL-17 RC	0	5	16	49	148	444	1,333	4,000
IL-20 R beta	0	55	165	494	1,481	4,444	13,333	40,000
IL-1F8	0	5.5	16.5	49.4	148.1	444.4	1,333.3	4,000
IL-21 R	0	137	412	1,235	3,704	11,111	33,333	100,000
IL-23 R	0	1	4	12	37	111	333	1,000
IL-28A	0	3	8	25	74	222	667	2,000
JAM-C	0	0.5	1.6	4.9	14.8	44.4	133.3	400
Klotho beta	0	137	412	1,235	3,704	11,111	33,333	100,000
Layilin	0	5	16	49	148	444	1,333	4,000
LDL R	0	137	412	1,235	3,704	11,111	33,333	100,000
LIF	0	0.1	0.4	1.2	3.7	11.1	33.3	100
Matrilin-3	0	3	8	25	74	222	667	2,000
Lymphotoxin beta R	0	0.3	0.8	2.5	7.4	22.2	66.7	200
Nephrin	0	27	82	247	741	2,222	6,667	20,000
Neurocan	0	5	16	49	148	444	1,333	4,000
NKp46	0	5	16	49	148	444	1,333	4,000
Laminin alpha 4	1	137	412	1,235	3,704	11,111	33,333	100,000

XI. Spiking & Recovery

The antibody pairs used in the kit have been tested to recognize their specific antigen. The spiking recovery rates of each protein in some common fluids are listed in the following tables.

QAM-CYT-10 media spike-in recovery rate for culture media and serum

(pg/ml)	Spike-in	Serum	Serum+Ag	Serum%	CM	CM+Ag	CM%
ADAM9	500	4	478	95%	1	464	93%
CD14	50,000	76	26,794	53%	0	35,119	70%
CD39L3	5,000	6	3,064	61%	3	3,484	70%
CDNF	100	2	83	81%	1	75	74%
Cripto	1,000	0	659	66%	4	1,583	158%
CXCL14	4,000	47	4,498	111%	49	4,741	117%
Epimorphin	2,000	15	1,814	90%	21	1,663	82%
Erythropoietin R	10,000	12	10,156	101%	34	9,888	99%
Flt-3	50,000	0	27,800	56%	106	27,983	56%
Follistatin	1,000	11	1,249	124%	6	1,072	107%
Frizzled-1	20,000	0	12,008	60%	0	13,253	66%
Frizzled-4	10,000	90	6,670	66%	99	7,924	78%
FSTL1	5,000	91	4,478	88%	57	4,336	86%
GDF-3	20,000	0	13,187	66%	2	19,853	99%
GDF-7	2,000	21	2,014	100%	65	2,106	102%
GFR alpha-3	5,000	14	4,881	97%	17	4,148	83%
IFN-gamma R2	200	5	187	91%	5	189	92%
IL-1 RI	50,000	289	29,430	58%	566	41,747	82%
IL-1 RII	20,000	46	10,292	51%	22	16,193	81%
IL-10 R beta	10,000	29	8,739	87%	35	6,767	67%
IL-11 R alpha	1,000	3	1,055	105%	10	976	97%
IL-15 R alpha	500	3	492	98%	5	548	108%
IL-17 RA	1,000	2	863	86%	1	963	96%
IL-17 RC	2,000	3	1,886	94%	6	1,702	85%
IL-20 R beta	20,000	27	16,710	83%	93	13,964	69%
IL-1F8	50	0	52	104%	0	49	99%
IL-21 R	50,000	130	41,105	82%	148	34,881	69%
IL-23 R	500	2	300	60%	3	501	99%
IL-28A	1,000	9	1,193	118%	20	1,292	127%
JAM-C	200	2	199	99%	3	202	100%
Klotho beta	50,000	0	45,174	90%	30	53,649	107%
Layilin	2,000	25	1,550	76%	20	1,108	54%
LDL R	5,000	23	2,526	50%	24	2,556	51%
LIF	50	0	38	75%	1	56	112%
Matrilin-3	1,000	27	1,210	118%	16	1,598	158%
Lymphotoxin beta R	100	0	96	96%	1	102	101%
Nephrin	10,000	90	8,808	87%	194	9,021	88%
Neurocan	2,000	9	1,885	94%	8	1,782	89%
NKp46	2,000	4	1,834	91%	7	1,526	76%
Laminin alpha 4	50,000	376	46,473	92%	221	65,842	131%

XII. Quantibody[®] Q-Analyzer

The Q-Analyzer is an array specific, Excel-based program. It is much more than a simple calculation macro; it performs sophisticated data analysis (see below for description).

The Q-Analyzer Tool specific for this array is catalog number: **QAM-CYT-10-SW**.

Key features:

- Simplicity: Easy to operate and requires no professional training. With a simple copy and paste process, the cytokine concentration is determined.
- Outlier Marking & Removing: The software can automatically mark and remove the outlier spots for more accurate data analysis
- Normalization: The program allows for intra- and inter-slide normalization for large numbers of samples.
- Two Positive Controls: The program utilizes the two positive controls in each array for normalization.
- Two Analytical Algorithms: Users can choose either linear regression or log-log algorithms to meet their analytical needs.
- Two Data Outputs: standard curves and digital concentration.
- User Intervention: The program allows for user manual handling of outliers and other analytical data.
- Lower and Upper Limits Determination: The program automatically marks out the values below or above the detection range.
- Standard Deviation: The program outputs the standard deviations of the quadruplicate spots for data accuracy.
- Analytical Tips: Q-Analyzer analysis tips are included in the program.

XIII. Troubleshooting Guide

Problem	Cause	Recommendation
Weak Signal	Inadequate detection	Increase laser power and PMT parameters
	Inadequate reagent volumes or improper dilution	Check pipettes and ensure correct preparation
	Short incubation time	Increase incubation time or change sample incubation step to overnight
	Too low protein concentration in sample	Lessen dilution or do not dilute sample. Concentrate sample if necessary.
	Improper storage of kit	Store kit as suggested temperature. Don't freeze/thaw the slide.
Uneven signal	Bubble formed during incubation	Decrease amount of rocking during incubations. check for bubble formation and remove bubbles.
	Arrays are not completely covered by reagent	Completely cover arrays with solution for all required steps.
	Reagent evaporation	Cover the incubation chamber with adhesive film during incubation
Poor standard curve	Cross-contamination from neighboring wells	Avoid overflowing wash buffer and other solutions into neighboring wells.
	Comet tail formation	Air dry the slide for at least 1 hour before usage
	Inadequate standard reconstitution or Improper dilution	Reconstitute the lyophilized standard well at the room temperature before making serial dilutions. Check pipettes and ensure proper serial dilutions.
	Inadequate detection	Increase laser power so the highest standard concentration for each cytokine receives the highest possible reading yet remains unsaturated.
	Use freeze-thawed cytokine standards	Always use new cytokine standard vial for new set of experiment. Discard any leftover.
High background	Overexposure	Lower the PMT or signal gain.
	Dark spots	Completely remove wash buffer in each wash step.
	Insufficient wash	Increase wash time and use more wash buffer
	Dust	Work in clean environment
	Slide is allowed to dry out	Don't dry out slides during experiment.

XIV. Select Quantibody[®] Publications

1. Zeng Q., et al. The functional behavior of a macrophage/fibroblast co-culture model derived from normal and diabetic mice with a marine gelatin-oxidized alginate hydrogel. *Biomaterials*. 2010 Aug;31(22):5772-81. doi: 10.1016/j.biomaterials.2010.04.022.
Species: Mouse
2. Toh H, Wang W, Chia W, Kvistborg P, Sun Li, et al. Clinical Benefit of Allogeneic Melanoma Cell Lysate-Pulsed Autologous Dendritic Cell Vaccine in MAGE-Positive Colorectal Cancer Patients. *Clin Cancer Res*. 2009;15(24):7726-7736
Species: Human
Sample Type: Plasma
3. Du Y, Wei X, He Y, Wei G, Hampel H, et al. P2-380: Identification and characterization of human autoantibodies that may be used for the treatment of prion diseases. *Alzheimer Dementia*. 2008;4(4 Suppl):T484 (Abstract P2-380).
Species: Human
Sample Type: Plasma
4. Jonnalagadda D., et al. Platelet secretion is kinetically heterogeneous in an agonist-responsive manner. December 20, 2012; *Blood*: 120 (26). <http://dx.doi.org/10.1182/blood-2012-07-445080>
Species: Human
Sample Type: Conditioned Media
5. Vargas-Inchaustegui D., Hogg A., Tulliano G., et al. CXCL10 Production by Human Monocytes in Response to *Leishmania braziliensis* Infection. *Infect. Immun*. January 2010 vol. 78 no. 1 301-308
Species: Human
Sample Type: Serum
6. Zhai Y, Zhong Z, Chen C-YA, Xia Z, Song L, Blackburn MR, Shyu A-B. Coordinated Changes in mRNA Turnover, Translation, and RNA Processing Bodies in Bronchial Epithelial Cells following Inflammatory Stimulation. *Mol Cell Biol*. 2008; 28(24):7414-7426.
Species: Human
7. Huggenberger R., et al. Stimulation of lymphangiogenesis via VEGFR-3 inhibits chronic skin inflammation. *J Exp Med*. 2010 Sep 27;207(10):2255-69. doi: 10.1084/jem.20100559.
Species: Mouse
Sample Type: Tissue Lysate
8. Jurk D., Wilson C., Passos J., et al. Chronic inflammation induces telomere dysfunction and accelerates ageing in mice. *Nature Communications* 2, Article number: 4172. doi:10.1038/ncomms5172
Species: Mouse
Sample Type: Conditioned Media
9. Bethunaickan, R., Sahu, R., Liu, Z., Tang, Y. T., Huang, W., Edegebe, O., Tao, H., Ramanujam, M., Madaio, M. P. and Davidson, A. (2012), Anti-tumor necrosis factor alpha treatment of interferon-alpha-induced murine lupus nephritis reduces the renal macrophage response but does not alter glomerular immune complex formation. *Arthritis & Rheumatism*, 64: 3399-3408. doi: 10.1002/art.34553
Species: Mouse
Sample Type: Tissue Lysate
10. Hou T., Li Z., Luo F., Xie Z., Wu X., Xing J., Dong S., Xu J. A composite demineralized bone matrix e Self assembling peptide scaffold for enhancing cell and growth factor activity in bone marrow. *Biomaterials*, Available online 19 April 2014. [Epub ahead of print]
Species: Mouse
Sample Type: Tissue Lysate
11. Feng W., Madajka M., Kerr B., Mahabeleshwar G., White S., Byzova T. A novel role for platelet secretion in angiogenesis: mediating bone marrow-derived cell mobilization and homing. *Blood* April 7, 2011 vol. 117 no. 14 3893-3902
Species: Mouse

XV. Experiment Record Form

Date: _____

File Name: _____

Laser Power: _____

PMT: _____

Well No.	Sample Name	Dilution factor
1	CNTRL	
2	Std7	
3	Std6	
4	Std5	
5	Std4	
6	Std3	
7	Std2	
8	Std1	
9		
10		
11		
12		
13		
14		
15		
16		

1	2
3	4
5	6
7	8
9	10
11	12
13	14
15	16

XVI. How to Choose a Quantibody[®] Array?

Species-based selection:

Human (QAH-)	Mouse (QAM-)	Rat (QAR-)	Bovine (QAB-)	Canine (QAC-)
Equine (QAE-)	Feline (QAF-)	Primates (QAN-)	Porcine (QAP-)	Rabbit (QAL-)

Function-based selection:

Adhesion Molecule Arrays	Angiogenesis Arrays	Bone Metabolism Arrays	Chemokine Arrays
Custom Arrays	Cytokine Arrays	Growth Factor Arrays	IGF Signaling Arrays
IL-1 Family Arrays	Immune Response Arrays	Inflammation Arrays	Interleukin Arrays
Isotyping Arrays	MMP Arrays	Obesity Arrays	Ophthalmic Arrays
Periodontal Disease Arrays	Receptor Arrays	Th1/Th2/Th17 Arrays	

Cytokine Number-based selection:

Arrays are available in the Quantibody[®] platform to detect 1000 human, 200 mouse, or 67 rat proteins. GLP-Compliant testing services are also available.

To learn more about the Quantibody[®] Antibody Array, visit
www.RayBiotech.com/Quantibody-Multiplex-Elisa-Array.html

Quantibody[®] is the trademark of RayBiotech, Inc.
This product is for research use only.



©2019 RayBiotech, Inc