

Quantibody[®] Mouse Cytokine Array 9

Quantitative measurement of 40 Mouse cytokines

Catalog #: QAM-CYT-9

User Manual

Last revised July 18, 2019

Caution:
Extraordinarily useful information enclosed



ISO 13485 Certified

3607 Parkway Lane, Suite 100
Norcross, GA 30092

Tel: 1-888-494-8555 (Toll Free) or 770-729-2992, Fax: 770-206-2393

Web: www.RayBiotech.com, Email: info@raybiotech.com

Table of Contents

Section	Page #
I. Overview	3
II. Introduction	3
III. How It Works	5
IV. Materials Provided	6
V. Storage	6
VI. Additional Materials Required	6
VII. General Considerations	7
A. Sample Preparation	7
B. Handling Glass Slides	7
C. Incubation	7
VIII. Protocol	8
A. Completely Air Dry The Glass Slide	8
B. Prepare Cytokine Standard Dilutions	8
C. Blocking & Incubation	9
D. Incubation with Biotinylated Antibody Cocktail & Wash	10
E. Incubation with Cy3 Equivalent Dye-Streptavidin & Wash	10
F. Fluorescence Detection	11
G. Data Analysis	12
IX. Array Map & Standard Curves	13
X. Standard Concentrations	14
XI. Spiking & Recovery	15
XII. Q-Analyzer: Data Analysis Software	16
XIII. Troubleshooting Guide	17
XIV. Select Publications	18
XV. Experiment Record Form	19
XVI. How To Choose A Quantibody®	20

Please read the entire manual carefully before starting your experiment

I. Overview

Cytokines Detected (40)	2B4, 4-1BB Ligand, Activin RIB, Ameloblastin, ANGPTL7, B7-2, B7-H2, B7-H3, B7-H4, BAFF, C1q R1, Cathepsin H, CD117, CD157, CD200, CD229, CD28, CD300b, CD39, CD44, CD45, CD69, CD99-L2, CHL-1, CHRDL2, COCO, CRACC, CXADR, DcTRAIL R1, Dectin-2, DNAM-1, DNER, Endoglycan, EphA8, EphB2, EphB4, EphB6, Ephrin-A2, Ephrin-A4, FGF-21 <i>See Section IX for Array Map</i>
Format	One standard glass slide is spotted with 16 wells of identical cytokine antibody arrays. Each antibody is arrayed in quadruplicate.
Detection Method	Fluorescence. Go to www.RayBiotech.com/Scanners for a list of compatible laser scanners.
Sample Volume	50 - 100 µl per array
Reproducibility	CV <20%
Assay Duration	6 hours

II. Introduction

Cytokines play an important role in innate immunity, apoptosis, angiogenesis, cell growth and differentiation. They are involved in interactions between different cell types, cellular responses to environmental conditions, and maintenance of homeostasis. In addition, cytokines are also involved in most disease processes, including cancer and cardiac diseases.

The traditional method for cytokine detection and quantification is through the use of an enzyme-linked immunosorbent assay (ELISA). In this method, target protein is immobilized to a solid support. The immobilized protein is then complexed with an antibody that is linked to an enzyme. Detection of the enzyme complex can then be visualized through the use of a substrate that produces a detectable signal. While this traditional method works well for a single protein, the overall procedure is time consuming and requires a relatively high volume of sample. Thus, conservation of precious small sample quantities becomes a challenging task. Innovations in microarray technology over the last decade have addressed this problem. A long-standing leader in the field, Raybiotech, has pioneered the development of cytokine antibody arrays, which have now been widely applied in the research community with hundreds of peer

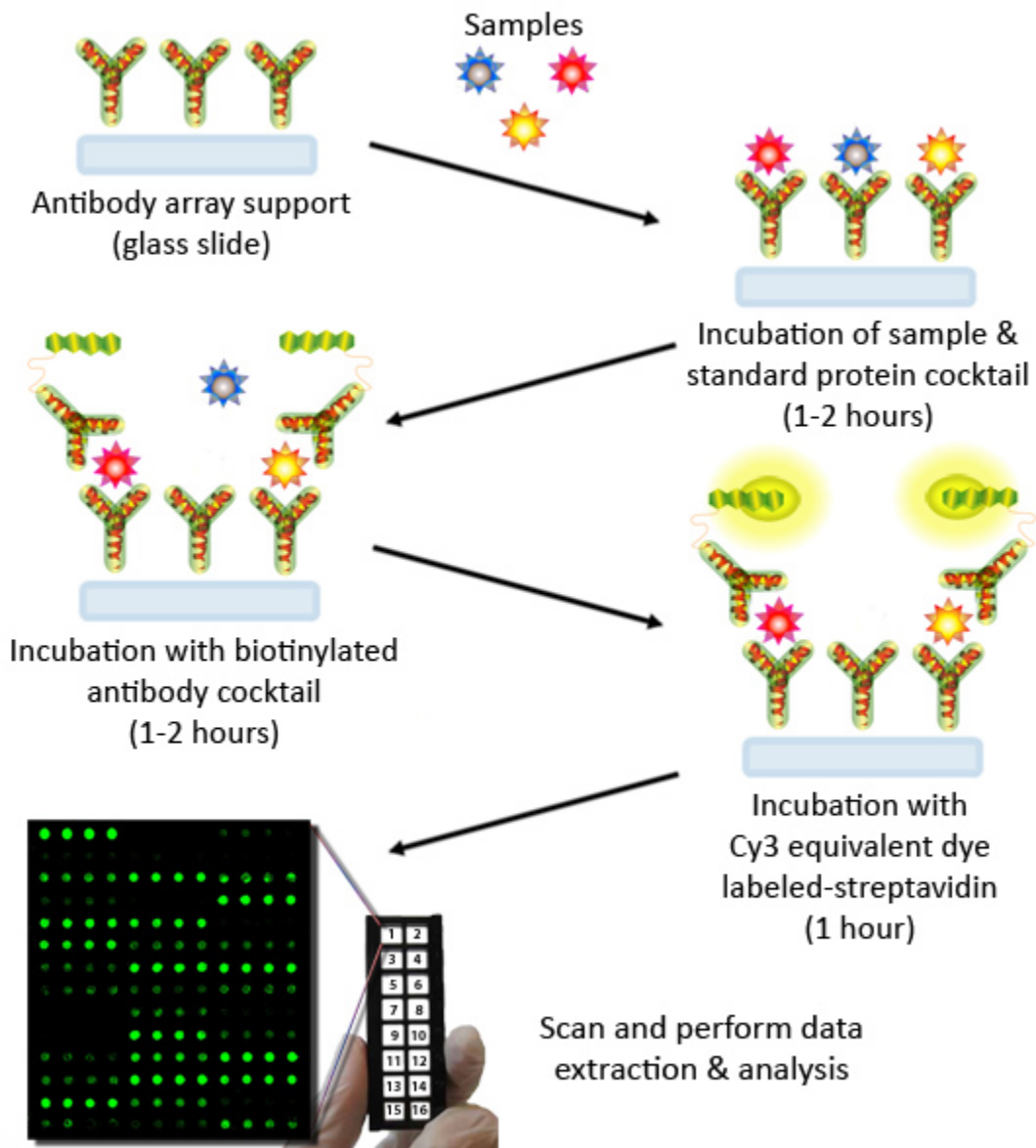
reviewed publications, including top-tier journals such as *Cell* and *Nature*.

The Quantibody[®] array, our multiplexed sandwich ELISA-based quantitative array platform, enables researchers to accurately determine the concentration of multiple cytokines simultaneously. It combines the advantages of the high detection sensitivity & specificity of ELISA and the high throughput of arrays. Like a traditional sandwich-based ELISA, it uses a pair of cytokine specific antibodies for detection. A capture antibody is first bound to the glass surface. After incubation with the sample, the target cytokine is trapped on the solid surface. A second biotin-labeled detection antibody is then added, which can recognize a different epitope of the target cytokine. The cytokine-antibody-biotin complex can then be visualized through the addition of the streptavidin-conjugated Cy3 equivalent dye, using a laser scanner. Unlike the traditional ELISA, Quantibody products use an array format. By arraying multiple cytokine specific capture antibodies onto a glass support, quantitative, multiplex detection of cytokines in one experiment is made possible.

In detail, one standard glass slide is divided into 16 wells of identical cytokine antibody arrays. Each antibody, together with the positive controls is arrayed in quadruplicate. The slide comes with a 16-well removable gasket which allows for the process of 16 samples on one slide. Four slides can be nested into a tray, which matches a standard microplate footprint and allows for automated robotic high throughput process of 64 arrays simultaneously. For cytokine quantification, the array specific cytokine standards, whose concentration has been predetermined, are provided to generate a standard curve for each cytokine. In a real experiment, standard cytokines and samples will be assayed in each array simultaneously through a sandwich ELISA procedure. By comparing signals from unknown samples to the standard curve, the cytokine concentration in the samples will be determined.

Quantibody[®] array kits have been confirmed to have similar detection sensitivity as traditional ELISA. Our current high density Quantibody kits allow scientists to quantitatively determine the concentration of 1000 human, 200 mouse, and 67 rat cytokines in a single experiment. This is not only one of the most efficient products on the market for cytokine quantification, but makes it more affordable for quantification of large number of proteins. Simultaneous detection of multiple cytokines undoubtedly provides a powerful tool for drug and biomarker discovery.

III. How It Works



IV. Materials Provided

	Catalog #	Component Name	1 Slide Box	2 Slide Box*
1	QAM-CYT-9 S	Mouse Cytokine Array 9 Glass Slide	1	2
2	QA-SDB	Quantibody® Sample Diluent	15 ml	
3	AA-WB1-30ML	20X Wash Buffer I	2 x 30 ml	3 x 30 ml
4	AA-WB2-30ML	20X Wash Buffer II	30 ml	
5	QAM-CYT-9 -STD	Mouse Cytokine Array 9 Lyophilized Standard Mix**	1 Vial	
6	QAM-CYT-9 B	Mouse Cytokine Array 9 Biotinylated Antibody Cocktail	1-25 µl	2 x 1-25 µl
7	QA-CY3E	Cy3 equivalent dye-conjugated Streptavidin	5 µl	2 x 5 µl
8	QA-SWD	Slide Washer/Dryer	1 x 30 ml Tube	
9	QA-ADH	Adhesive Film	1	2

* 4 slide kits are comprised of 2 separate 2 slide kits.

** See Section X for detailed cytokine concentrations after reconstitution.

V. Storage

Upon receipt, all components should be stored at -20°C. The kit will retain activity for up to 6 months. Once thawed, the glass slide, standard mix, antibody cocktail and dye-conjugated Streptavidin should be kept at -20°C. All other components may be stored at 4°C. The entire kit should be used within 6 months of purchase.

VI. Additional Materials Required

- Benchtop rocker or orbital rocker
- Laser scanner for fluorescence detection
- Aluminum foil
- Distilled water
- 1.5 ml Polypropylene microcentrifuge tubes

VII. General Considerations

A. Preparation of Samples

- Use serum-free conditioned media if possible.
- If serum-containing conditioned media is required, it is highly recommended that complete medium be used as a control since many types of sera contains cytokines.
- Each array needs 100 µl of total sample volume. To avoid matrix effects, we recommend using a minimum of 2-fold sample dilution of culture media, body fluids, or 0.5-1mg/ml total protein for lysates, after a 5-fold to 10-fold dilution to minimize the effects of any detergent(s). Please be aware, more sample volume is required for combination arrays. For example, the minimum sample volume for a 10-array kit is 500 µl, or 500 µg lysate.
- The suggested serum/plasma dilution for this array is: 2x

B. Handling Glass Slides

- Do not touch the surface of the slides, as the microarray slides are very sensitive. Hold the slides by the edges only.
- Handle all buffers and slides with powder free gloves.
- Handle glass slide/s in clean environment.
- Permanent marker ink can significantly interfere with fluorescent signal detection. To help distinguish one slide from another, you may make a small marking (such as a number or a star) along the top or bottom edge, using a green or blue ultra-fine point Sharpie® brand marker. This can also serve to orient the slide. For best results during scanning, please **DO NOT**:
 - Write anywhere on the front (arrayed) side of the slide
 - Write on the slide while it is wet
 - Use red or black colored ink anywhere on the slide
 - Write over the arrayed well areas of the slide, as this interferes with scanning.

C. Incubation

- Completely cover array area with sample or buffer during incubation.
- Avoid foaming during incubation steps.
- Perform all incubation and wash steps under gentle rocking or rotation.
- Cover the incubation chamber with adhesive film during incubation, particularly when incubation is more than 2 hours or <70 µl of sample or reagent is used.

- Several incubation steps such as step 6 (blocking), step 7 (sample incubation), step 10 (detection antibody incubation), or step 13 (Cy3 equivalent dye-streptavidin incubation) may be done overnight at 4°C. Please make sure to cover the incubation chamber tightly to prevent evaporation.

VIII. Protocol

A. Completely Air Dry The Glass Slide

1. Take out the glass slide from the box, and let it equilibrate to room temperature inside the sealed plastic bag for 20-30 minutes. Remove slide from the plastic bag, peel off the cover film, and let it air dry for another 1-2 hours.

Incomplete drying of slides before use may cause the formation of "comet tails," thin directional smearing of antibody spots.

B. Prepare Cytokine Standard Dilutions

There is only one vial of standard provided in the two-slide kit, which is enough for making two standard curves. Reconstitute the lyophilized standard within one hour of usage. If you must use the standard for two different days, store only the Std1 dilution at -80°C.



2. Reconstitute the Cytokine Standard Mix (lyophilized) by adding 500 µl Sample Diluent to the tube. For best recovery, always quick-spin vial prior to opening. Dissolve the powder thoroughly by a gentle mix. Labeled the tube as Std1.

3. Label 6 clean microcentrifuge tubes as Std2 to Std7. Add 200 µl Sample Diluent to each of the tubes.
4. Pipette 100 µl Std1 into tube Std2 and mix gently. Perform 5 more serial dilutions by adding 100 µl Std2 to tube Std3 and so on.
5. Add 100 µl Sample Diluent to another tube labeled as CNTRL. Do not add standard cytokines or samples to the CNTRL tube, which will be used as negative control. For best results, include a set of standards in each slide.

Since the starting concentration of each cytokine is different, the serial concentrations from Std1 to Std7 for each cytokine are varied which can be found in Section X.

C. Blocking & Incubation

6. Add 100 µl Sample Diluent into each well and incubate at room temperature for 30 minutes to block slides.
7. Decant buffer from each well. Add 100 µl standard cytokines or samples to each well. Incubate arrays at room temperature for 1-2 hour.

Longer incubation time is preferable for higher signals. This step may be done overnight at 4°C.

We recommend using 50 to 100 µl of original or diluted serum, plasma, conditioned media, or other body fluid, or 250 µg/ml-1 mg/ml of protein for cell and tissue lysates. Cover the incubation chamber with adhesive film during incubation, especially if less than 70 ul of sample or reagent is used.

8. Wash:

- Decant the samples from each well, and wash 5 times (5 min each) with 150 µl of 1X Wash Buffer I at room temperature with gentle rocking. Completely remove wash buffer in each wash step. Dilute 20x Wash Buffer I with H₂O.
- *(Optional for Cell and Tissue Lysates)* Put the glass slide with frame into a box with 1X Wash Buffer I (cover the whole glass slide and frame with Wash Buffer

l), and wash at room temperature with gentle rocking for 20 min.

- Decant the 1x Wash Buffer I from each well, wash 2 times (5 min each) with 150 µl of 1X Wash Buffer II at room temperature with gentle rocking. Completely remove wash buffer in each wash step. Dilute 20X Wash Buffer II with H₂O.

Incomplete removal of the wash buffer in each wash step may cause "dark spots," the background signals higher than the spots.

D. Incubation with Biotinylated Antibody Cocktail & Wash

9. Reconstitute the detection antibody by adding 1.4 ml of Sample Diluent to the tube. Spin briefly.
10. Add 80 µl of the detection antibody cocktail to each well. Incubate at room temperature for 1-2 hour.

Longer incubation time is preferable for higher signals and backgrounds

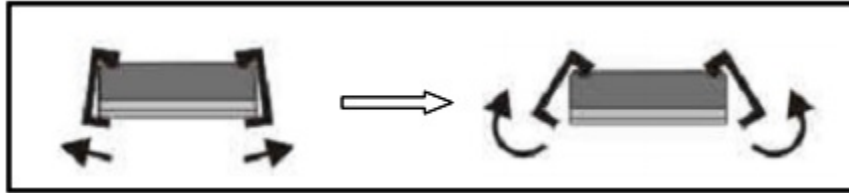
11. Decant the samples from each well, and wash 5 times (5 mins each) with 150 µl of 1X Wash Buffer I and then 2 times with 150 µl of 1x Wash Buffer II at room temperature with gentle rocking. Completely remove wash buffer in each wash step.

E. Incubation with Cy3 Equivalent Dye-Streptavidin & Wash

12. After briefly spinning down, add 1.4 ml of Sample Diluent to Cy3 equivalent dye-conjugated streptavidin tube. Mix gently.
13. Add 80 µl of Cy3 equivalent dye-conjugated streptavidin to each well. Cover the device with aluminum foil to avoid exposure to light or incubate in dark room. Incubate at room temperature for 1 hour.
Decant the samples from each well, and wash 5 times (5 mins each) with 150 µl of 1X Wash Buffer I at room temperature with gentle rocking. Completely remove wash buffer in each wash step.
14. µl of 1X Wash Buffer I at room temperature with gentle rocking. Completely remove wash buffer in each wash step.

F. Fluorescence Detection

15. Disassemble the device by pushing clips outward from the slide side. Carefully remove the slide from the gasket.



Be careful not to touch the surface of the array side.

16. Place the slide in the Slide Washer/Dryer (a 4-slide holder/centrifuge tube), add enough 1x Wash Buffer I (about 30 ml) to cover the whole slide, and then gently shake at room temperature for 15 minutes. Decant Wash Buffer I. Wash with 1x Wash Buffer II (about 30 ml) and gently shake at room temperature for 5 minutes.
17. Remove water droplets completely by gently applying suction with a pipette to remove water droplets. Do not touch the array, only the sides.

You may also dry the glass slide by a compressed N₂ stream.

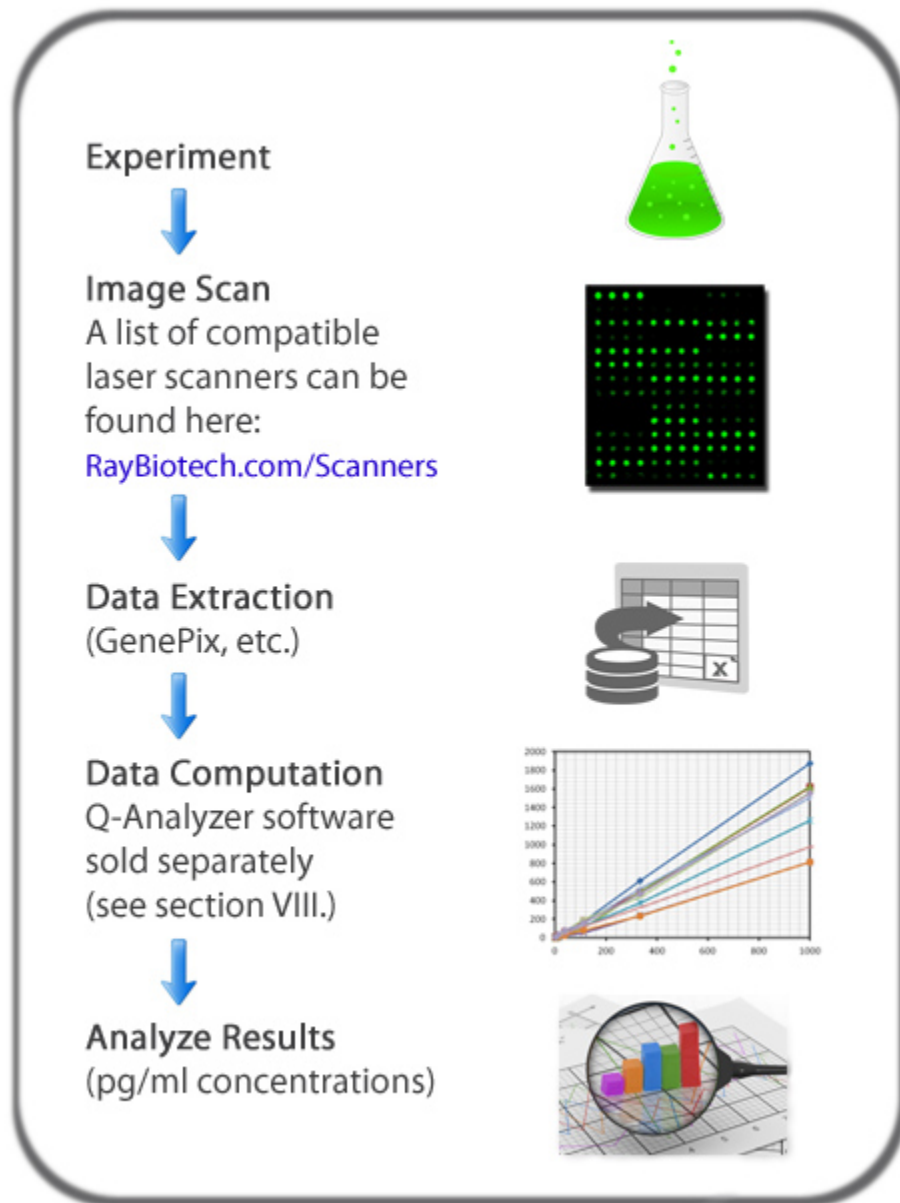
18. Imaging: The signals can be visualized through use of a laser scanner equipped with a Cy3 wavelength (green channel) such as Axon GenePix or Innopsys Innoscan. Make sure that the signal from the well containing the highest standard concentration (Std1) receives the highest possible reading, yet remains unsaturated.

In case the signal intensity for different cytokine varies greatly in the same array, we recommend using multiple scans, with a higher PMT for low signal cytokines, and a low PMT for high signal cytokines.

G. Data Analysis

19. Data extraction can be done using the GAL file that is specific for this array along with the microarray analysis software (GenePix, ScanArray Express, ArrayVision, MicroVigene, etc.). GAL files can be found here: www.RayBiotech.com/Gal-Files.html.

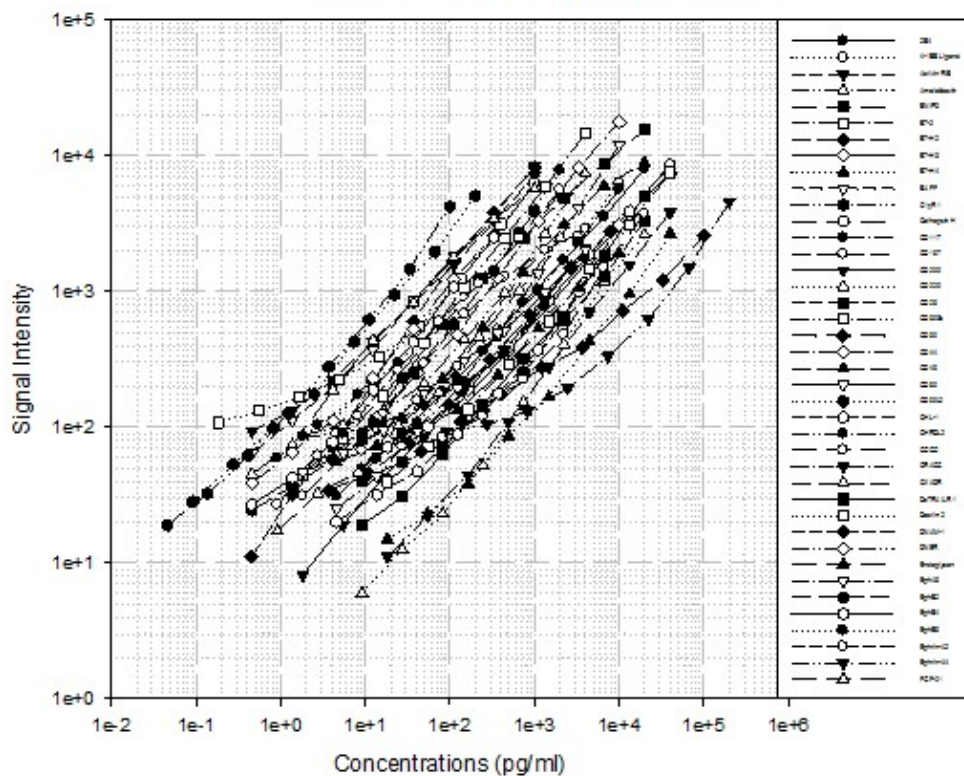
Need help analyzing all that data? Copy and paste your data into the Q-Analyzer Tool specific for this array, catalog number: **QAM-CYT-9-SW**. More information can be found in Section XII.



IX. Array Map & Standard Curves

(mCYT9 Map) Each antibody is printed in quadruplicate horizontally												
	1	2	3	4	1	2	3	4	1	2	3	4
A	POS1				POS2				2B4			
B	4-1BB Ligand				Activin RIB				Ameloblastin			
C	ANGPTL7				B7-2				B7-H2			
D	B7-H3				B7-H4				BAFF			
E	C1q R1				Cathepsin H				CD117			
F	CD157				CD200				CD229			
G	CD28				CD300b				CD39			
H	CD44				CD45				CD69			
I	CD99-L2				CHL-1				CHRD12			
J	COCO				CRACC				CXADR			
K	DcTRAIL R1				Dectin-2				DNAM-1			
L	DNER				Endoglycan				EphA8			
M	EphB2				EphB4				EphB6			
N	Ephrin-A2				Ephrin-A4				FGF-21			

QAM-CYT-9 Standard Curves



X. Standard Concentrations

After reconstitution, the lyophilized cytokine standard mix contains the following concentrations for each antigen included.

QAM-CYT-9 Serial Standard Concentrations (pg/ml)

(pg/ml)	Cntrl	Std7	Std6	Std5	Std4	Std3	Std2	Std1
2B4	0	27	82	247	741	2,222	6,667	20,000
4-1BB Ligand	0	14	41	123	370	1,111	3,333	10,000
Activin RIB	0	1	4	12	37	111	333	1,000
Ameloblastin	0	5	16	49	148	444	1,333	4,000
ANGPTL7	0	27	82	247	741	2,222	6,667	20,000
B7-2	0	5	16	49	148	444	1,333	4,000
B7-H2	0	11	33	99	296	889	2,667	8,000
B7-H3	0	55	165	494	1,481	4,444	13,333	40,000
B7-H4	0	55	165	494	1,481	4,444	13,333	40,000
BAFF	0	1	4	12	37	111	333	1,000
C1q R1	0	0.1	0.4	1.2	3.7	11.1	33	100
Cathepsin H	0	55	165	494	1,481	4,444	13,333	40,000
CD117	0	5	16	49	148	444	1,333	4,000
CD157	0	5	16	49	148	444	1,333	4,000
CD200	0	5	16	49	148	444	1,333	4,000
CD229	0	27	82	247	741	2,222	6,667	20,000
CD28	0	27	82	247	741	2,222	6,667	20,000
CD300b	0	55	165	494	1,481	4,444	13,333	40,000
CD39	0	137	412	1,235	3,704	11,111	33,333	100,000
CD44	0	14	41	123	370	1,111	3,333	10,000
CD45	0	27	82	247	741	2,222	6,667	20,000
CD69	0	5	16	49	148	444	1,333	4,000
CD99-L2	0	0.3	0.8	2.5	7.4	22.2	67	200
CHL-1	0	14	41	123	370	1,111	3,333	10,000
CHRD2	0	14	41	123	370	1,111	3,333	10,000
COCO	0	27	82	247	741	2,222	6,667	20,000
CRACC	0	55	165	494	1,481	4,444	13,333	40,000
CXADR	0	3	8	25	74	222	667	2,000
DcTRAIL R1	0	27	82	247	741	2,222	6,667	20,000
Dectin-2	0	0.5	1.6	4.9	14.8	44.4	133	400
DNAM-1	0	1	4	12	37	111	333	1,000
DNER	0	1	4	12	37	111	333	1,000
Endoglycan	0	14	41	123	370	1,111	3,333	10,000
EphA8	0	14	41	123	370	1,111	3,333	10,000
EphB2	0	14	41	123	370	1,111	3,333	10,000
EphB4	0	1	4	12	37	111	333	1,000
EphB6	0	3	8	25	74	222	667	2,000
Ephrin-A2	0	3	8	25	74	222	667	2,000
Ephrin-A4	0	274	823	2,469	7,407	22,222	66,667	200,000
FGF-21	1	1	4	12	37	111	333	1,000

XI. Spiking & Recovery

The antibody pairs used in the kit have been tested to recognize their specific antigen. The spiking recovery rates of each protein in some common fluids are listed in the following tables.

QAM-CYT-9 media spike-in recovery rate for culture media and serum

(pg/ml)	Spike-in	Serum	Serum+Ag	Serum%	CM	CM+Ag	CM%
2B4	10,000	3	8,157	82%	0	8,822	88%
4-1BB Ligand	5,000	199	3,300	62%	16	3,694	74%
Activin RIB	500	1	398	79%	0	443	89%
Ameloblastin	2,000	16	1,806	90%	0	2,065	103%
ANGPTL7	10,000	6	8,092	81%	0	9,517	95%
B7-2	2,000	0	1,597	80%	0	1,765	88%
B7-H2	4,000	59	3,569	88%	15	4,960	124%
B7-H3	20,000	0	13,866	69%	0	14,630	73%
B7-H4	20,000	563	10,599	50%	58	10,209	51%
BAFF	500	13	415	80%	0	466	93%
C1q R1	50	6	41	70%	0	52	103%
Cathepsin H	20,000	70	16,067	80%	0	14,501	73%
CD117	2,000	35	1,376	67%	54	1,822	88%
CD157	2,000	0	1,296	65%	0	1,445	72%
CD200	2,000	4	1,511	75%	0	2,004	100%
CD229	10,000	65	9,067	90%	53	6,301	62%
CD28	10,000	73	7,393	73%	83	7,860	78%
CD300b	20,000	55	19,021	95%	29	20,328	101%
CD39	50,000	35	44,743	89%	283	49,088	98%
CD44	5,000	21	6,257	125%	0	5,628	113%
CD45	10,000	24	8,389	84%	9	8,451	84%
CD69	2,000	26	2,262	112%	22	2,680	133%
CD99-L2	100	1	68	67%	0	103	102%
CHL-1	5,000	40	3,883	77%	16	2,626	52%
CHRD2	5,000	31	3,613	72%	20	3,633	72%
COCO	10,000	423	8,579	82%	461	10,866	104%
CRACC	20,000	41	12,317	61%	56	12,529	62%
CXADR	1,000	9	938	93%	0	1,135	114%
DcTRAIL R1	10,000	41	7,818	78%	43	13,939	139%
Dectin-2	200	6	256	125%	1	265	132%
DNAM-1	500	1	435	87%	0	359	72%
DNER	500	2	373	74%	1	566	113%
Endoglycan	5,000	17	5,778	115%	36	6,128	122%
EphA8	5,000	15	4,031	80%	15	3,219	64%
EphB2	500	4	577	115%	4	476	94%
EphB4	500	7	467	92%	3	257	51%
EphB6	1,000	8	969	96%	2	594	59%
Ephrin-A2	1,000	1	795	79%	1	681	68%
Ephrin-A4	100,000	3,719	109,635	106%	1,004	73,422	72%
FGF-21	500	2	397	79%	1	360	72%

XII. Quantibody[®] Q-Analyzer

The Q-Analyzer is an array specific, Excel-based program. It is much more than a simple calculation macro; it performs sophisticated data analysis (see below for description).

The Q-Analyzer Tool specific for this array is catalog number: **QAM-CYT-9-SW**.

Key features:

- Simplicity: Easy to operate and requires no professional training. With a simple copy and paste process, the cytokine concentration is determined.
- Outlier Marking & Removing: The software can automatically mark and remove the outlier spots for more accurate data analysis
- Normalization: The program allows for intra- and inter-slide normalization for large numbers of samples.
- Two Positive Controls: The program utilizes the two positive controls in each array for normalization.
- Two Analytical Algorithms: Users can choose either linear regression or log-log algorithms to meet their analytical needs.
- Two Data Outputs: standard curves and digital concentration.
- User Intervention: The program allows for user manual handling of outliers and other analytical data.
- Lower and Upper Limits Determination: The program automatically marks out the values below or above the detection range.
- Standard Deviation: The program outputs the standard deviations of the quadruplicate spots for data accuracy.
- Analytical Tips: Q-Analyzer analysis tips are included in the program.

XIII. Troubleshooting Guide

Problem	Cause	Recommendation
Weak Signal	Inadequate detection	Increase laser power and PMT parameters
	Inadequate reagent volumes or improper dilution	Check pipettes and ensure correct preparation
	Short incubation time	Increase incubation time or change sample incubation step to overnight
	Too low protein concentration in sample	Lessen dilution or do not dilute sample. Concentrate sample if necessary.
	Improper storage of kit	Store kit as suggested temperature. Don't freeze/thaw the slide.
Uneven signal	Bubble formed during incubation	Decrease amount of rocking during incubations. check for bubble formation and remove bubbles.
	Arrays are not completely covered by reagent	Completely cover arrays with solution for all required steps.
	Reagent evaporation	Cover the incubation chamber with adhesive film during incubation
Poor standard curve	Cross-contamination from neighboring wells	Avoid overflowing wash buffer and other solutions into neighboring wells.
	Comet tail formation	Air dry the slide for at least 1 hour before usage
	Inadequate standard reconstitution or Improper dilution	Reconstitute the lyophilized standard well at the room temperature before making serial dilutions. Check pipettes and ensure proper serial dilutions.
	Inadequate detection	Increase laser power so the highest standard concentration for each cytokine receives the highest possible reading yet remains unsaturated.
	Use freeze-thawed cytokine standards	Always use new cytokine standard vial for new set of experiment. Discard any leftover.
High background	Overexposure	Lower the PMT or signal gain.
	Dark spots	Completely remove wash buffer in each wash step.
	Insufficient wash	Increase wash time and use more wash buffer
	Dust	Work in clean environment
	Slide is allowed to dry out	Don't dry out slides during experiment.

XIV. Select Quantibody[®] Publications

1. Zeng Q., et al. The functional behavior of a macrophage/fibroblast co-culture model derived from normal and diabetic mice with a marine gelatin-oxidized alginate hydrogel. *Biomaterials*. 2010 Aug;31(22):5772-81. doi: 10.1016/j.biomaterials.2010.04.022.
Species: Mouse
2. Toh H, Wang W, Chia W, Kvistborg P, Sun Li, et al. Clinical Benefit of Allogeneic Melanoma Cell Lysate-Pulsed Autologous Dendritic Cell Vaccine in MAGE-Positive Colorectal Cancer Patients. *Clin Cancer Res*. 2009;15(24):7726-7736
Species: Human
Sample Type: Plasma
3. Du Y, Wei X, He Y, Wei G, Hampel H, et al. P2-380: Identification and characterization of human autoantibodies that may be used for the treatment of prion diseases. *Alzheimer Dementia*. 2008;4(4 Suppl):T484 (Abstract P2-380).
Species: Human
Sample Type: Plasma
4. Jonnalagadda D., et al. Platelet secretion is kinetically heterogeneous in an agonist-responsive manner. December 20, 2012; *Blood*: 120 (26). <http://dx.doi.org/10.1182/blood-2012-07-445080>
Species: Human
Sample Type: Conditioned Media
5. Vargas-Inchaustegui D., Hogg A., Tulliano G., et al. CXCL10 Production by Human Monocytes in Response to *Leishmania braziliensis* Infection. *Infect. Immun*. January 2010 vol. 78 no. 1 301-308
Species: Human
Sample Type: Serum
6. Zhai Y, Zhong Z, Chen C-YA, Xia Z, Song L, Blackburn MR, Shyu A-B. Coordinated Changes in mRNA Turnover, Translation, and RNA Processing Bodies in Bronchial Epithelial Cells following Inflammatory Stimulation. *Mol Cell Biol*. 2008; 28(24):7414-7426.
Species: Human
7. Huggenberger R., et al. Stimulation of lymphangiogenesis via VEGFR-3 inhibits chronic skin inflammation. *J Exp Med*. 2010 Sep 27;207(10):2255-69. doi: 10.1084/jem.20100559.
Species: Mouse
Sample Type: Tissue Lysate
8. Jurk D., Wilson C., Passos J., et al. Chronic inflammation induces telomere dysfunction and accelerates ageing in mice. *Nature Communications* 2, Article number: 4172. doi:10.1038/ncomms5172
Species: Mouse
Sample Type: Conditioned Media
9. Bethunaickan, R., Sahu, R., Liu, Z., Tang, Y. T., Huang, W., Edegebe, O., Tao, H., Ramanujam, M., Madaio, M. P. and Davidson, A. (2012), Anti-tumor necrosis factor alpha treatment of interferon-alpha-induced murine lupus nephritis reduces the renal macrophage response but does not alter glomerular immune complex formation. *Arthritis & Rheumatism*, 64: 3399-3408. doi: 10.1002/art.34553
Species: Mouse
Sample Type: Tissue Lysate
10. Hou T., Li Z., Luo F., Xie Z., Wu X., Xing J., Dong S., Xu J. A composite demineralized bone matrix e Self assembling peptide scaffold for enhancing cell and growth factor activity in bone marrow. *Biomaterials*, Available online 19 April 2014. [Epub ahead of print]
Species: Mouse
Sample Type: Tissue Lysate
11. Feng W., Madajka M., Kerr B., Mahabeleshwar G., White S., Byzova T. A novel role for platelet secretion in angiogenesis: mediating bone marrow-derived cell mobilization and homing. *Blood* April 7, 2011 vol. 117 no. 14 3893-3902
Species: Mouse

XV. Experiment Record Form

Date:_____

File Name:_____

Laser Power:_____

PMT:_____

Well No.	Sample Name	Dilution factor
1	CNTRL	
2	Std7	
3	Std6	
4	Std5	
5	Std4	
6	Std3	
7	Std2	
8	Std1	
9		
10		
11		
12		
13		
14		
15		
16		

1	2
3	4
5	6
7	8
9	10
11	12
13	14
15	16

XVI. How to Choose a Quantibody[®] Array?

Species-based selection:

Human (QAH-)	Mouse (QAM-)	Rat (QAR-)	Bovine (QAB-)	Canine (QAC-)
Equine (QAE-)	Feline (QAF-)	Primates (QAN-)	Porcine (QAP-)	Rabbit (QAL-)

Function-based selection:

Adhesion Molecule Arrays	Angiogenesis Arrays	Bone Metabolism Arrays	Chemokine Arrays
Custom Arrays	Cytokine Arrays	Growth Factor Arrays	IGF Signaling Arrays
IL-1 Family Arrays	Immune Response Arrays	Inflammation Arrays	Interleukin Arrays
Isotyping Arrays	MMP Arrays	Obesity Arrays	Ophthalmic Arrays
Periodontal Disease Arrays	Receptor Arrays	Th1/Th2/Th17 Arrays	

Cytokine Number-based selection:

Arrays are available in the Quantibody[®] platform to detect 1000 human, 200 mouse, or 67 rat proteins. GLP-Compliant testing services are also available.

To learn more about the Quantibody[®] Antibody Array, visit
www.RayBiotech.com/Quantibody-Multiplex-Elisa-Array.html

Quantibody[®] is the trademark of RayBiotech, Inc.
This product is for research use only.



©2019 RayBiotech, Inc