
Recombinant Citrus Sinensis (Sweet Orange) Cit s 2 Protein

Catalog Number: 230-00059

Data Sheet / Certificate of Analysis (CoA)

Last Revised: 11/25/2024

Source

Species	Citrus sinensis (Sweet orange)
Accession Number	P84177
Gene Symbols	Cit s 2
Synonyms	Cit s 2, Profilin.
Expressed Region	Ser2-Leu130

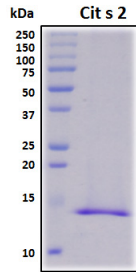
Preparation

Expression System	E. coli
Tag	N-terminal histidine tag
Purity	>95%
Molecular Weight	14 kDa

Specifications

Format	Lyophilized powder
Formulation	Lyophilized from a 0.45 ?m filtered solution in 1x PBS (pH 7.4).
Concentration	Determined by Pierce BCA protein assay kit
Reconstitution	Briefly spin the vial and bring the contents to the bottom prior to opening. It is recommended to reconstitute at 0.5 - 1.0 mg/mL with sterile deionized water.

SDS-PAGE Image



Shipping

The product is shipped with ice packs. Upon arrival, immediately store it at the temperature recommended below.

Storage/Stability

- Use a manual defrost freezer and avoid repeated freeze-thaw cycles.
- Upon arrival, the lyophilized protein may be stored for 2 weeks at 4°C.
- For long term storage, it is recommended to store desiccated below -20°C in a manual defrost freezer.
- Generally, the shelf life is up to 12 months from date of receipt at -20°C or -80°C under sterile conditions.
- Following reconstitution, the protein may be stored for 2 weeks under sterile conditions at -20°C. For long term storage, it is recommended to make appropriate aliquots at -20°C or -80°C.