

## Recombinant Human GNB2L1 (HLC-7) Protein

**Catalog Number:** 230-00861

### Data Sheet / Certificate of Analysis (CoA)

Last Revised: 11/26/2024

### Source

<b>Species</b>	Human
<b>Accession Number</b>	P63244
<b>Gene Symbols</b>	GNB2L1
<b>Synonyms</b>	GNB2L1, Receptor of activated protein kinase C 1, Guanine Nucleotide Binding Protein (G Protein), Beta Polypeptide 2-Like 1, RACK1, Guanine Nucleotide-Binding Protein Subunit Beta-Like Protein 12.3, Cell Proliferation-Inducing Gene 21 Protein, Receptor Of Activated Protein Kinase C 1, Human Lung Cancer Oncogene 7 Protein, Receptor For Activated C Kinase 1, HLC-7, Protein Homologous To Chicken B Complex Protein, Guanine Nucleotide Binding, Guanine Nucleotide Binding Protein Beta Polypeptide 2-Like 1, Guanine Nucleotide-Binding Protein Subunit Beta-2-Like 1, Receptor For Activated C Kinase, Proliferation-Inducing Gene 21, Lung Cancer Oncogene 7, Gnb2-Rs1, H12.3, PIG21
<b>Expressed Region</b>	Thr2-Arg317

### Preparation

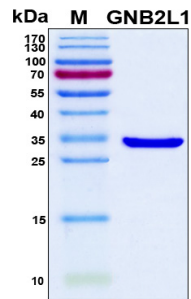
<b>Expression System</b>	E. coli
<b>Tag</b>	N-terminal 6x histidine tag
<b>Purity</b>	>90%
<b>Molecular Weight</b>	35 kDa

### Specifications

<b>Format</b>	Lyophilized powder
<b>Formulation</b>	Lyophilized from a 0.45 ?m filtered solution in 1x PBS (pH 7.4).
<b>Concentration</b>	Determined by Bio-Rad protein assay dye reagent concentrate.
<b>Reconstitution</b>	Briefly spin the vial and bring the contents to the bottom prior to opening. It is recommended to reconstitute at 0.5~1.0 mg/mL with sterile deionized water.



### SDS-PAGE Image



### Shipping

The product is shipped with ice packs. Upon arrival, immediately store it at the temperature recommended below.

### Storage/Stability

- Use a manual defrost freezer and avoid repeated freeze-thaw cycles.
- Upon arrival, the lyophilized protein may be stored for 2 weeks at 4°C.
- For long term storage, it is recommended to store desiccated below -20°C in a manual defrost freezer.
- Generally, the shelf life is up to 12 months from date of receipt at -20°C or -80°C under sterile conditions.
- Following reconstitution, the protein may be stored for 2 weeks under sterile conditions at -20°C. For long term storage, it is recommended to make appropriate aliquots at -20°C or -80°C.