

**Recombinant Human GRB2 SH2 domain with 3 mutants (A91V, S96A, K109L)****Source**

<b>Species</b>	Human
<b>Accession Number</b>	P62993
<b>Gene Symbol</b>	GRB2
<b>Expressed Region</b>	Trp60-Glu152 (3 mutants: A91V, S96A, K109L)
<b>Synonyms</b>	GRB2, Growth Factor Receptor Bound Protein 2, SH2/SH3 Adapter GRB2, Protein Ash, ASH, Epidermal Growth Factor Receptor-Binding Protein GRB2, Growth Factor Receptor-Bound Protein 3, Abundant SRC Homology, Adapter Protein GRB2, EGFRBP-GRB2, MSTP084, Grb3-3, MST084, NCKAP2, HT027.

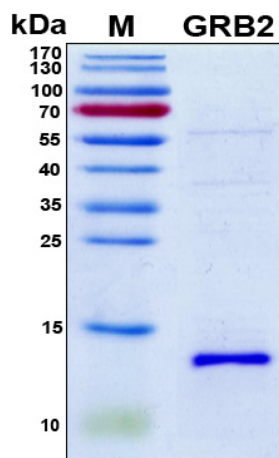
**Preparation**

<b>Expression System</b>	E.Coli
<b>Tag</b>	N-terminal 6x histidine tag
<b>Purification</b>	His-tag affinity purification by immobilized metal ion affinity chromatography (IMAC)
<b>Purity</b>	>90%
<b>Purity Determined By</b>	SDS-PAGE under reducing conditions and visualized by Coomassie blue staining
<b>Molecular Weight</b>	13

**Protein Specifications**

<b>Format</b>	Liquid
<b>Formulation</b>	Supplied as a 0.45 µm filtered solution in 1x PBS (pH 7.4).
<b>Concentration</b>	Lot specific (see the label on the vial), determined by Bio-Rad protein assay dye reagent concentrate.
<b>Preservative</b>	None
<b>Recommended Applications</b>	Protein-protein Interaction, Post-translational Modifications, ELISA, EIA, Western Blotting, Dot Blotting, Immunoprecipitation, Protein Array, etc.

SDS-PAGE Image



## Shipping

Ice packs

## Storage/Stability

Upon arrival, the protein may be stored for 2 weeks at 4 °C. For long term storage, it is recommended to store at -20 °C or -80 °C in appropriate aliquots. Avoid repeated freeze-thaw cycles.

This product is furnished for LABORATORY RESEARCH USE ONLY.

Not for diagnostic or therapeutic use.