
Recombinant Human Hu R Protein**Source**

Species	Human
Accession Number	Q15717
Gene Symbol	ELAVL1
Expressed Region	Ser2-Lys326
Synonyms	Hu R Protein, ELAV Like RNA Binding Protein 1, ELAV (Embryonic Lethal, Abnormal Vision, Drosophila)-Like 1 (Hu Antigen R), Embryonic Lethal, Abnormal Vision, Drosophila, Homolog-Like 1, Hu Antigen R, Hu-Antigen R, HUR, ELAV-Like Protein 1, ELAV1, MeIG, Hua.

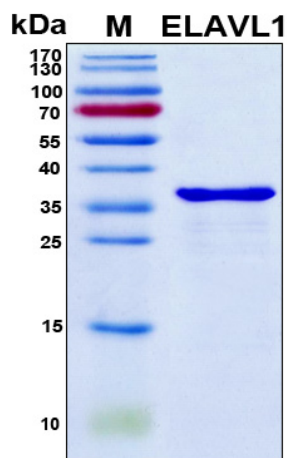
Preparation

Expression System	E.Coli
Tag	N-terminal 6x histidine tag
Purification	His-tag affinity purification by immobilized metal ion affinity chromatography (IMAC)
Purity	>90%
Purity Determined By	SDS-PAGE under reducing conditions and visualized by Coomassie blue staining
Molecular Weight	31

Protein Specifications

Format	Liquid
Formulation	Supplied as a 0.45 µm filtered solution in 20 mM NaH ₂ PO ₄ (pH 7.4), 0.5 M NaCl, 200 mM imidazole.
Concentration	Lot specific (see the label on the vial), determined by Bio-Rad protein assay dye reagent concentrate.
Preservative	None
Recommended Applications	Protein-protein Interaction, Post-translational Modifications, ELISA, EIA, Western Blotting, Dot Blotting, Immunoprecipitation, Protein Array, etc.

SDS-PAGE Image



Shipping

Ice packs

Storage/Stability

Upon arrival, the protein may be stored for 2 weeks at 4 °C. For long term storage, it is recommended to store at -20 °C or -80 °C in appropriate aliquots. Avoid repeated freeze-thaw cycles.

This product is furnished for **LABORATORY RESEARCH USE ONLY**.

Not for diagnostic or therapeutic use.