

---

**Recombinant Human Hu B Protein****Source**

<b>Species</b>	Human
<b>Accession Number</b>	Q12926-2
<b>Gene Symbol</b>	ELAVL2
<b>Expressed Region</b>	Glu2-Ala346
<b>Synonyms</b>	Hu B Protein, ELAV Like RNA Binding Protein 2, ELAV Like Neuron-Specific RNA Binding Protein 2, ELAV (Embryonic Lethal, Abnormal Vision, Drosophila)-Like 2 (Hu Antigen B), Nervous System-Specific RNA-Binding Protein Hel-N1, Hu-Antigen B, HUB, ELAV (Embryonic Lethal, Abnormal Vision, Drosophila)-Like 2, ELAV-Like Neuronal Protein 1 Isoform Hel-N2, ELAV-Like Neuronal Protein 1, ELAV-Like Protein 2, Hu Antigen B, HEL-N1, HELN1.

**Preparation**

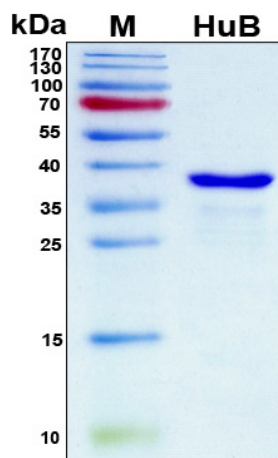
<b>Expression System</b>	E.Coli
<b>Tag</b>	N-terminal 6x histidine tag
<b>Purification</b>	His-tag affinity purification by immobilized metal ion affinity chromatography (IMAC)
<b>Purity</b>	>90%
<b>Purity Determined By</b>	SDS-PAGE under reducing conditions and visualized by Coomassie blue staining
<b>Molecular Weight</b>	38

**Protein Specifications**

<b>Format</b>	Liquid
<b>Formulation</b>	Supplied as a 0.45 µm filtered solution in 20 mM NaH <sub>2</sub> PO <sub>4</sub> (pH 7.4), 0.5 M NaCl, 800 mM imidazole.
<b>Concentration</b>	Lot specific (see the label on the vial), determined by Bio-Rad protein assay dye reagent concentrate.
<b>Preservative</b>	None
<b>Recommended Applications</b>	Protein-protein Interaction, Post-translational Modifications, ELISA, EIA, Western Blotting, Dot Blotting, Immunoprecipitation, Protein Array, etc.



SDS-PAGE Image



## Shipping

Ice packs

## Storage/Stability

Upon arrival, the protein may be stored for 2 weeks at 4 °C. For long term storage, it is recommended to store at -20 °C or -80 °C in appropriate aliquots. Avoid repeated freeze-thaw cycles.

This product is furnished for **LABORATORY RESEARCH USE ONLY**.

Not for diagnostic or therapeutic use.