
Recombinant Human SNAP25**Source**

Species	Human
Accession Number	P60880
Gene Symbol	SNAP25
Expressed Region	Ala2-Gly206
Synonyms	SNAP25, Synaptosomal-Associated Protein, 25kDa, Resistance To Inhibitors Of Cholinesterase 4 Homolog, Synaptosomal-Associated Protein, 25kD, Super Protein, SNAP-25, SNAP, SUP, Synaptosomal-Associated 25 KDa Protein, Synaptosomal-Associated Protein 25, DJ1068F16.2, BA416N4.2, RIC-4, RIC4, SEC9

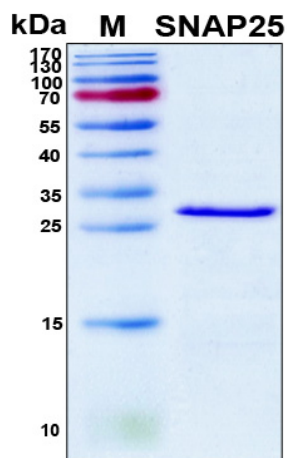
Preparation

Expression System	E.Coli
Tag	N-terminal 6x histidine tag
Purification	His-tag affinity purification by immobilized metal ion affinity chromatography (IMAC)
Purity	>90%
Purity Determined By	SDS-PAGE under reducing conditions and visualized by Coomassie blue staining
Molecular Weight	26

Protein Specifications

Format	Liquid
Formulation	Supplied as a 0.45 µm filtered solution in 20 mM NaH ₂ PO ₄ (pH 7.4), 0.5 M NaCl, 800 mM imidazole.
Concentration	Lot specific (see the label on the vial), determined by Bio-Rad protein assay dye reagent concentrate.
Preservative	None
Recommended Applications	Protein-protein Interaction, Post-translational Modifications, ELISA, EIA, Western Blotting, Dot Blotting, Immunoprecipitation, Protein Array, etc.

SDS-PAGE Image



Shipping

Ice packs

Storage/Stability

Upon arrival, the protein may be stored for 2 weeks at 4 °C. For long term storage, it is recommended to store at -20 °C or -80 °C in appropriate aliquots. Avoid repeated freeze-thaw cycles.

This product is furnished for LABORATORY RESEARCH USE ONLY.

Not for diagnostic or therapeutic use.