
Recombinant Human CRMP-5**Source**

Species	Human
Accession Number	Q9BPU6
Gene Symbol	DPYSL5
Expressed Region	Leu2-Trp564
Synonyms	CRMP-5, Dihydropyrimidinase Like 5, Collapsin Response Mediator Protein 5, UNC33-Like Phosphoprotein 6, CRMP3-Associated Molecule, CRMP-5, ULIP-6, Ulip6, CRMP5, DRP-5, CRAM, Collapsin Response Mediator Protein-5, Dihydropyrimidinase-Related Protein 5, Dihydropyrimidinase-Like 5.

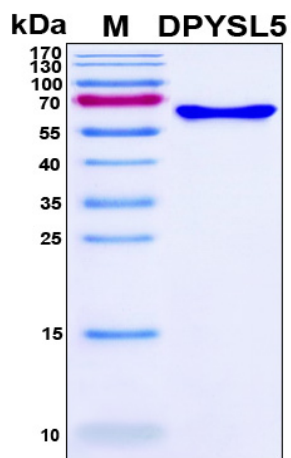
Preparation

Expression System	E.Coli
Tag	N-terminal 6x histidine tag
Purification	His-tag affinity purification by immobilized metal ion affinity chromatography (IMAC)
Purity	>95%
Purity Determined By	SDS-PAGE under reducing conditions and visualized by Coomassie blue staining
Molecular Weight	61

Protein Specifications

Format	Liquid
Formulation	Supplied as a 0.45 µm filtered solution in 20 mM NaH ₂ PO ₄ (pH 7.4), 0.5 M NaCl, 800 mM imidazole.
Concentration	Lot specific (see the label on the vial), determined by Bio-Rad protein assay dye reagent concentrate.
Preservative	None
Recommended Applications	Protein-protein Interaction, Post-translational Modifications, ELISA, EIA, Western Blotting, Dot Blotting, Immunoprecipitation, Protein Array, etc.

SDS-PAGE Image



Shipping

Ice packs

Storage/Stability

Upon arrival, the protein may be stored for 2 weeks at 4 °C. For long term storage, it is recommended to store at -20 °C or -80 °C in appropriate aliquots. Avoid repeated freeze-thaw cycles.

This product is furnished for LABORATORY RESEARCH USE ONLY.

Not for diagnostic or therapeutic use.