

## Recombinant Human Sorbitol Dehydrogenase

### Source

Species	Human
Accession Number	Q00796-1
Gene Symbol	SORD
Expressed Region	Ala2-Pro357
Synonyms	Sorbitol Dehydrogenase, Sorbitol Dehydrogenase, L-Iditol 2-Dehydrogenase, EC 1.1.1.14, Epididymis Secretory Sperm Binding Protein Li 95n, HEL-S-95n, EC 1.1.1, SORD1.

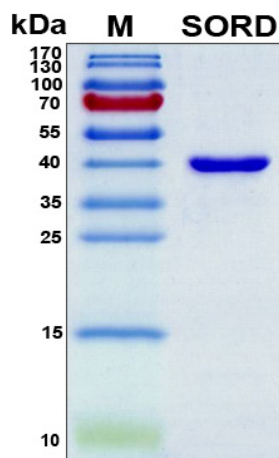
### Preparation

Expression System	E.Coli
Tag	N-terminal 6x histidine tag
Purification	His-tag affinity purification by immobilized metal ion affinity chromatography (IMAC)
Purity	>95%
Purity Determined By	SDS-PAGE under reducing conditions and visualized by Coomassie blue staining
Molecular Weight	40

### Protein Specifications

Format	Liquid
Formulation	Supplied as a 0.45 µm filtered solution in 1x PBS (pH 7.4), 20% glycerol.
Concentration	Lot specific (see the label on the vial), determined by Bio-Rad protein assay dye reagent concentrate.
Preservative	None
Recommended Applications	Protein-protein Interaction, Post-translational Modifications, ELISA, EIA, Western Blotting, Dot Blotting, Immunoprecipitation, Protein Array, etc.

SDS-PAGE Image



## Shipping

Ice packs

## Storage/Stability

Upon arrival, the protein may be stored for 2 weeks at 4 °C. For long term storage, it is recommended to store at -20 °C or -80 °C in appropriate aliquots. Avoid repeated freeze-thaw cycles.

This product is furnished for **LABORATORY RESEARCH USE ONLY**.

Not for diagnostic or therapeutic use.