
Recombinant Human interleukin-16**Source**

Species	Human
Accession Number	Q14005-2
Gene Symbol	IL16
Expressed Region	Pro1204-Ser1331
Synonyms	interleukin-16, Lymphocyte Chemoattractant Factor, Prointerleukin 16, Interleukin 16 (Lymphocyte Chemoattractant Factor), Neuronal Interleukin 16, Pro-Interleukin-16, PrIL-16, PRIL16, NIL16, LCF.

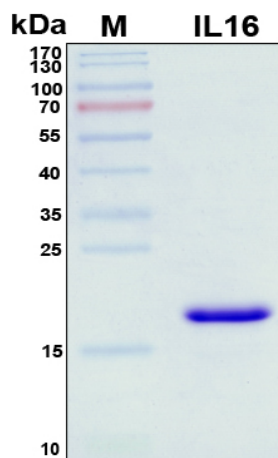
Preparation

Expression System	E.Coli
Tag	N-terminal histidine tag
Purification	His-tag affinity purification by immobilized metal ion affinity chromatography (IMAC)
Purity	>95%
Purity Determined By	SDS-PAGE under reducing conditions and visualized by Coomassie blue staining
Molecular Weight	17

Protein Specifications

Format	Liquid
Formulation	Supplied as a 0.45 µm filtered solution in 1x PBS (pH 7.4).
Concentration	Lot specific (see the label on the vial), determined by Bio-Rad protein assay dye reagent concentrate.
Recommended Applications	Protein-protein Interaction, Post-translational Modifications, ELISA, EIA, Western Blotting, Dot Blotting, Immunoprecipitation, Protein Array, etc.

SDS-PAGE Image



Shipping

Ice packs

Storage/Stability

Upon arrival, the protein may be stored for 2 weeks at 4 °C. For long term storage, it is recommended to store at -20 °C or -80 °C in appropriate aliquots. Avoid repeated freeze-thaw cycles.

This product is furnished for **LABORATORY RESEARCH USE ONLY**.

Not for diagnostic or therapeutic use.