

Recombinant Human Leptin

Source

| | |
|------------------|---------------------------------------------------------------------------------------------------------------------------------------------------|
| Species | Human |
| Accession Number | P41159 |
| Gene Symbol | LEP |
| Expressed Region | Val22-Cys167 |
| Synonyms | Leptin, Leptin (Murine Obesity Homolog), Leptin (Obesity Homolog, Mouse), Obesity Factor, Obese Protein, OBS, OB, Obese, Mouse, Homolog Of, LEPD. |

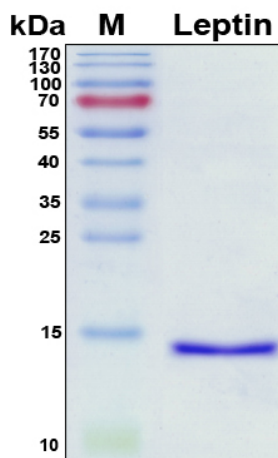
Preparation

| | |
|----------------------|---------------------------------------------------------------------------------------|
| Expression System | E.Coli |
| Tag | N-terminal histidine tag |
| Purification | His-tag affinity purification by immobilized metal ion affinity chromatography (IMAC) |
| Purity | >95% |
| Purity Determined By | SDS-PAGE under reducing conditions and visualized by Coomassie blue staining |
| Molecular Weight | 14 |

Protein Specifications

| | |
|---------------|-------------------------------------------------------------------------------------------------------------------------------------|
| Format | Liquid |
| Formulation | Supplied as a 0.45 µm filtered solution in 50 mM Na ₂ HPO ₄ (pH 7.4), 0.5 M NaCl, 300 mM imidazole, 6 M urea. |
| Concentration | Lot specific (see the label on the vial), determined by Bio-Rad protein assay dye reagent concentrate. |

SDS-PAGE Image



Shipping

Ice packs

Storage/Stability

Upon arrival, the protein may be stored for 2 weeks at 4 °C. For long term storage, it is recommended to store at -20 °C or -80 °C in appropriate aliquots. Avoid repeated freeze-thaw cycles.

This product is furnished for LABORATORY RESEARCH USE ONLY.

Not for diagnostic or therapeutic use.