

---

## Recombinant Almond Pru du 4 Protein

**Catalog Number:** 230-00892

**Data Sheet / Certificate of Analysis (CoA)**

Last Revised: 11/26/2024

### Source

---

<b>Species</b>	Prunus dulcis (Almond)
<b>Accession Number</b>	Q8GSL5
<b>Gene Symbols</b>	Pru du 4
<b>Synonyms</b>	Pru du 4, Profilin.
<b>Expressed Region</b>	Ser2-Leu131

### Preparation

---

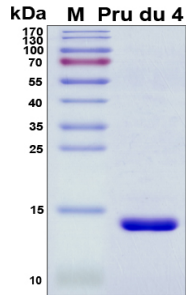
<b>Expression System</b>	E. coli
<b>Tag</b>	N-terminal histidine tag
<b>Purity</b>	>95%
<b>Molecular Weight</b>	14 kDa

### Specifications

---

<b>Format</b>	Lyophilized powder
<b>Formulation</b>	Lyophilized from a 0.45 µm filtered solution in 1x PBS (pH 7.4).
<b>Concentration</b>	Determined by Bio-Rad protein assay dye reagent concentrate.
<b>Reconstitution</b>	Briefly spin the vial and bring the contents to the bottom prior to opening. It is recommended to reconstitute at 0.5~1.0 mg/mL with sterile deionized water.

## SDS-PAGE Image



## Shipping

The product is shipped with ice packs. Upon arrival, immediately store it at the temperature recommended below.

## Storage/Stability

- Use a manual defrost freezer and avoid repeated freeze-thaw cycles.
- Upon arrival, the lyophilized protein may be stored for 2 weeks at 4°C.
- For long term storage, it is recommended to store desiccated below -20°C in a manual defrost freezer.
- Generally, the shelf life is up to 12 months from date of receipt at -20°C or -80°C under sterile conditions.
- Following reconstitution, the protein may be stored for 2 weeks under sterile conditions at -20°C. For long term storage, it is recommended to make appropriate aliquots at -20°C or -80°C.