
Recombinant Human Alpha-synuclein**Source**

Species	Human
Accession Number	P37840-1
Gene Symbol	SNCA
Expressed Region	Asp2-Ala140
Synonyms	Synuclein Alpha, Synuclein, Alpha (Non A4 Component Of Amyloid Precursor), PARK1, NACP, Parkinson Disease (Autosomal Dominant, Lewy Body) 4, Non A4 Component Of Amyloid Precursor, Non-A4 Component Of Amyloid Precursor, Non A-Beta Component Of AD Amyloid, Non-A Beta Component Of AD Amyloid, Synuclein Alpha-140, -Synuclein, PARK4, PD1.

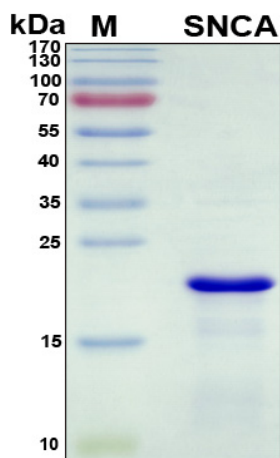
Preparation

Expression System	Escherichia coli (E.coli)
Tag	N-terminal histidine tag
Purification	His-tag affinity purification by immobilized metal ion affinity chromatography (IMAC)
Purity	>90 %
Purity Determined By	SDS-PAGE under reducing conditions and visualized by Coomassie blue staining
Molecular Weight	The band size (~20 kDa) presented in SDS-PAGE was slightly larger than the expected size (16 kDa)

Protein Specifications

Format	Lyophilized powder
Formulation	Lyophilized from a 0.2 um filtered solution in PBS (pH 7.4)
Concentration	Determined by BCA protein assay
Reconstitution	Briefly spin the vial and bring the contents to the bottom prior to opening. It is recommended to reconstitute at 0.1-1 mg/mL with sterile deionized water.

SDS-PAGE Image



Shipping

Ice packs

Storage/Stability

Upon arrival, the lyophilized protein may be stored for 2 weeks at 4°C. For long term storage, it is recommended to store desiccated below -20 °C in a manual defrost freezer. Following reconstitution, the protein may be stored for 2 weeks under sterile conditions at -20 °C. For long term storage, it is recommended to make appropriate aliquots and store at -80 °C. Avoid repeated freeze-thaw cycles.

This product is furnished for LABORATORY RESEARCH USE ONLY.

Not for diagnostic or therapeutic use.