

Recombinant *Sus scrofa* (pig) Leptin**Source**

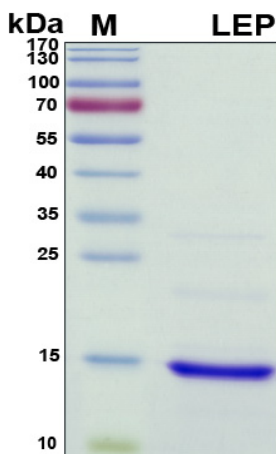
| | |
|-------------------------|---|
| Species | Sus scrofa (pig) |
| Accession Number | Q29406 |
| Gene Symbol | LEP |
| Expressed Region | Val22-Cys167 |
| Synonyms | Leptin, Leptin (Murine Obesity Homolog), Leptin (Obesity Homolog, Mouse), Obesity Factor, Obese Protein, OBS, OB, Obese, Mouse, Homolog Of, LEPD. |

Preparation

| | |
|-----------------------------|---|
| Expression System | Escherichia coli (E.coli) |
| Tag | N-terminal histidine tag |
| Purification | His-tag affinity purification by immobilized metal ion affinity chromatography (IMAC) |
| Purity | >90 % |
| Purity Determined By | SDS-PAGE under reducing conditions and visualized by Coomassie blue staining |
| Molecular Weight | 16 |

Protein Specifications

| | |
|----------------------|--|
| Format | Liquid |
| Formulation | Filtered solution in 50 mM Na ₂ HPO ₄ (pH 7.4), 0.5 M NaCl, 80 mM imidazole, 6 M urea. |
| Concentration | Lot specific (see the label on the vial), determined by Bradford protein assay. |

SDS-PAGE Image**Shipping**

Ice packs

Storage/Stability

Upon arrival, the protein may be stored for 2 weeks at 4 °C. For long term storage, it is recommended to store at -20 °C or -80 °C in appropriate aliquots. Avoid repeated freeze-thaw cycles.

This product is furnished for LABORATORY RESEARCH USE ONLY.

Not for diagnostic or therapeutic use.