

**Recombinant Sus scrofa (pig) IL-1b****Source**

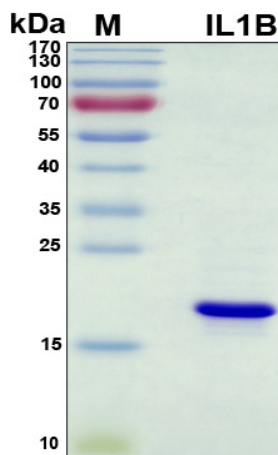
<b>Species</b>	Sus scrofa (pig)
<b>Accession Number</b>	P26889
<b>Gene Symbol</b>	IL1B
<b>Expressed Region</b>	Ala155-Pro267
<b>Synonyms</b>	Interleukin-1 beta, Interleukin 1 Beta, IL-1 Beta, Catabolin, IL1F2, Pro-Interleukin-1-Beta, Preinterleukin 1 Beta, IL1-BETA, IL-1.

**Preparation**

<b>Expression System</b>	Escherichia coli (E.coli)
<b>Tag</b>	N-terminal histidine tag
<b>Purification</b>	His-tag affinity purification by immobilized metal ion affinity chromatography (IMAC)
<b>Purity</b>	>95 %
<b>Purity Determined By</b>	SDS-PAGE under reducing conditions and visualized by Coomassie blue staining
<b>Molecular Weight</b>	18

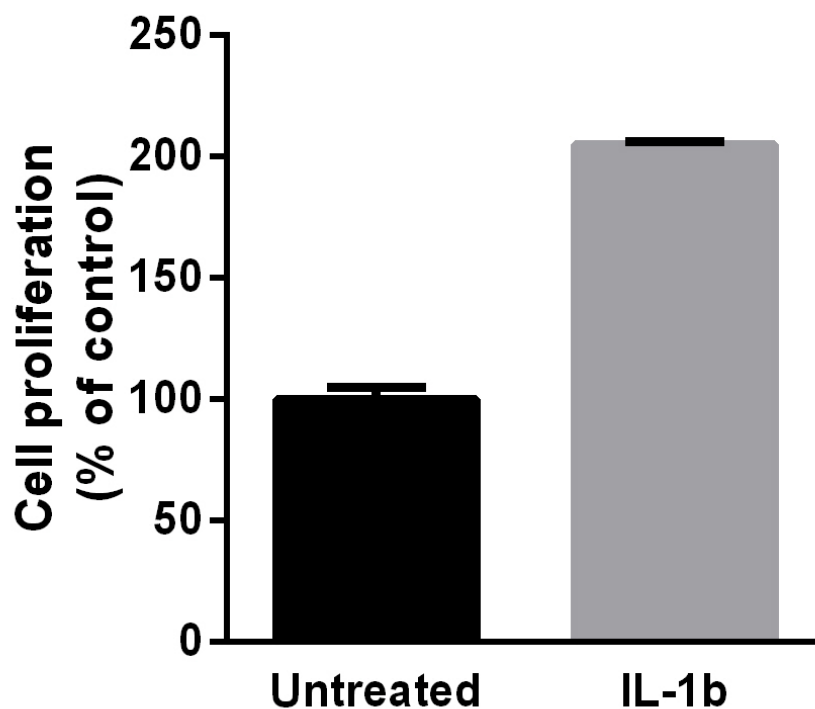
**Protein Specifications**

<b>Format</b>	Lyophilized powder
<b>Formulation</b>	Lyophilized from a 0.2 um filtered solution in PBS (pH 7.4)
<b>Concentration</b>	Determined by BCA protein assay
<b>Reconstitution</b>	Briefly spin the vial and bring the contents to the bottom prior to opening. It is recommended to reconstitute at 0.1-1 mg/mL with sterile deionized water.

**SDS-PAGE Image**

## Activity

Stimulating cell growth significantly. Measured in a cell proliferation assay using TF-1 human erythroleukemic cells.



## Shipping

Ice packs

## Storage/Stability

Upon arrival, the lyophilized protein may be stored for 2 weeks at 4°C. For long term storage, it is recommended to store desiccated below -20 °C in a manual defrost freezer. Following reconstitution, the protein may be stored for 2 weeks under sterile conditions at -20 °C. For long term storage, it is recommended to make appropriate aliquots and store at -80 °C. Avoid repeated freeze-thaw cycles.

This product is furnished for **LABORATORY RESEARCH USE ONLY**.

Not for diagnostic or therapeutic use.