

Recombinant Olea europea Ole e 1**Source**

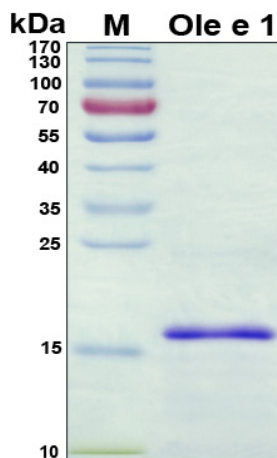
Species	Olea europea
Accession Number	P19963
Gene Symbol	Ole e 1
Expressed Region	Glu1-Met145
Synonyms	Major pollen allergen Ole e 1

Preparation

Expression System	Escherichia coli (E.coli)
Tag	N-terminal histidine tag
Purification	His-tag affinity purification by immobilized metal ion affinity chromatography (IMAC)
Purity	>95 %
Purity Determined By	SDS-PAGE under reducing conditions and visualized by Coomassie blue staining
Molecular Weight	16

Protein Specifications

Format	Liquid
Formulation	Filtered solution in 50 mM Na ₂ HPO ₄ (pH 7.4), 0.5 M NaCl, 30 mM imidazole, 6 M urea.
Concentration	Lot specific (see the label on the vial), determined by Bradford protein assay.

SDS-PAGE Image**Shipping**

Ice packs

Storage/Stability

Upon arrival, the protein may be stored for 2 weeks at 4 °C. For long term storage, it is recommended to store at -20 °C or -80 °C in appropriate aliquots. Avoid repeated freeze-thaw cycles.

This product is furnished for LABORATORY RESEARCH USE ONLY.

Not for diagnostic or therapeutic use.