

**Recombinant Sus scrofa (pig) IL-6****Source**

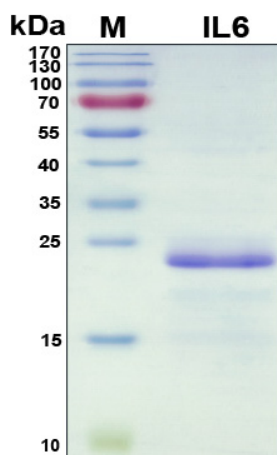
<b>Species</b>	Sus scrofa (pig)
<b>Accession Number</b>	P26893
<b>Gene Symbol</b>	IL6
<b>Expressed Region</b>	Glu30-Met212
<b>Synonyms</b>	Interleukin-6, Interleukin 6, B-Cell Stimulatory Factor 2, CTL Differentiation Factor, Hybridoma Growth Factor, Interferon Beta-2, IFN-Beta-2, IFNB2, BSF-2, IL-6, CDF, Interleukin 6 (Interferon, Beta 2), B-Cell Differentiation Factor, Interferon, Beta 2, Interleukin BSF-2, BSF2, HGF, HSF.

**Preparation**

<b>Expression System</b>	Escherichia coli (E.coli)
<b>Tag</b>	N-terminal histidine tag
<b>Purification</b>	His-tag affinity purification by immobilized metal ion affinity chromatography (IMAC)
<b>Purity</b>	>90 %
<b>Purity Determined By</b>	SDS-PAGE under reducing conditions and visualized by Coomassie blue staining
<b>Molecular Weight</b>	21

**Protein Specifications**

<b>Format</b>	Liquid
<b>Formulation</b>	Filtered solution in 50 mM Na <sub>2</sub> HPO <sub>4</sub> (pH 7.4), 0.5 M NaCl, 800 mM imidazole, 6 M urea.
<b>Concentration</b>	Lot specific (see the label on the vial), determined by Bradford protein assay.

**SDS-PAGE Image****Shipping**

Ice packs

### Storage/Stability

Upon arrival, the protein may be stored for 2 weeks at 4 °C. For long term storage, it is recommended to store at -20 °C or -80 °C in appropriate aliquots. Avoid repeated freeze-thaw cycles.

This product is furnished for LABORATORY RESEARCH USE ONLY.

Not for diagnostic or therapeutic use.