

## Recombinant Mouse Atg4a Protein

**Catalog Number:** 230-01044

### Data Sheet / Certificate of Analysis (CoA)

Last Revised: 11/26/2024

### Source

<b>Species</b>	Mouse
<b>Accession Number</b>	Q8C9S8
<b>Gene Symbols</b>	Atg4a
<b>Synonyms</b>	Autophagy Related 4A Cysteine Peptidase, Autophagy-Related Cysteine Endopeptidase 2, Autophagy-Related Protein 4 Homolog A, HAPG4A, APG4A, AUTL2, AUT-Like 2, Cysteine Endopeptidase (S. Cerevisiae), ATG4 Autophagy Related 4 Homolog A (S. Cerevisiae), APG4 Autophagy 4 Homolog A (S. Cerevisiae), Autophagy Related 4A, Cysteine Peptidase, ATG4 Autophagy Related 4 Homolog A, AUT-Like 2, Cysteine Endopeptidase, AUT-Like 2 Cysteine Endopeptidase, APG4 Autophagy 4 Homolog A, Autophagin 2, Autophagin-2, EC 3.4.22.-, EC 3.4.22.
<b>Expressed Region</b>	Glu2-Gly396

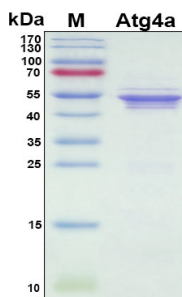
### Preparation

<b>Expression System</b>	E. coli
<b>Tag</b>	N-terminal His-tag
<b>Purity</b>	>90%
<b>Molecular Weight</b>	50 kDa

### Specifications

<b>Format</b>	Lyophilized powder
<b>Formulation</b>	Lyophilized from a 0.2 µm filtered solution in PBS (pH 7.4)
<b>Reconstitution</b>	Briefly spin the vial and bring the contents to the bottom prior to opening. It is recommended to reconstitute at 0.5 - 1.0 mg/mL with sterile deionized water.

## SDS-PAGE Image



## Shipping

The product is shipped with ice packs. Upon arrival, immediately store it at the temperature recommended below.

## Storage/Stability

- Use a manual defrost freezer and avoid repeated freeze-thaw cycles.
- Upon arrival, the lyophilized protein may be stored for 2 weeks at 4°C.
- For long term storage, it is recommended to store desiccated below -20°C in a manual defrost freezer.
- Generally, the shelf life is up to 12 months from date of receipt at -20°C or -80°C under sterile conditions.
- Following reconstitution, the protein may be stored for 2 weeks under sterile conditions at -20°C. For long term storage, it is recommended to make appropriate aliquots at -20°C or -80°C.