

**Recombinant Human CXCL1 Protein****Source**

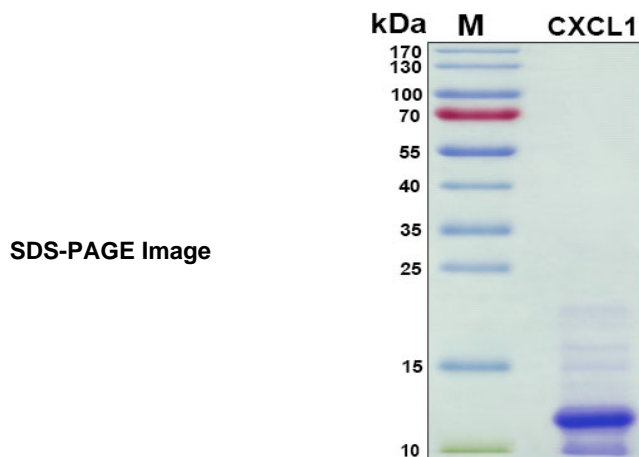
<b>Species</b>	Human
<b>Accession Number</b>	P09341
<b>Gene Symbol</b>	CXCL1
<b>Expressed Region</b>	Ala35-Asn107
<b>Synonyms</b>	Growth-regulated alpha protein, C-X-C motif chemokine 1, GRO-alpha(1-73), Melanoma growth stimulatory activity, MGSA, Neutrophil-activating protein 3, NAP-3.

**Preparation**

<b>Expression System</b>	Escherichia coli (E.coli)
<b>Tag</b>	N-terminal His-tag
<b>Purification</b>	His-tag affinity purification by immobilized metal ion affinity chromatography (IMAC)
<b>Purity</b>	>85%
<b>Purity Determined By</b>	SDS-PAGE under reducing conditions and visualized by Coomassie blue staining
<b>Molecular Weight</b>	11

**Protein Specifications**

<b>Format</b>	Liquid
<b>Formulation</b>	Supplied as a 0.2 um filtered solution in 0.1 M NaHCO <sub>3</sub> , 0.5 M NaCl (pH 8.0).
<b>Concentration</b>	Lot specific (see the label on the vial), determined by Bradford protein assay.
<b>Recommended Applications</b>	Functional Assay, Protein-protein Interaction, Post-translational Modifications, ELISA, EIA, Western Blotting, Dot Blotting, Immunoprecipitation, Protein Array, etc.



## Shipping

Ice packs

## Storage/Stability

Upon arrival, the protein may be stored for 2 weeks at 4 °C. For long term storage, it is recommended to store at -20 °C or -80 °C in appropriate aliquots. Avoid repeated freeze-thaw cycles.

This product is furnished for LABORATORY RESEARCH USE ONLY.

Not for diagnostic or therapeutic use.