

**Recombinant Human Furin Protein****Source**

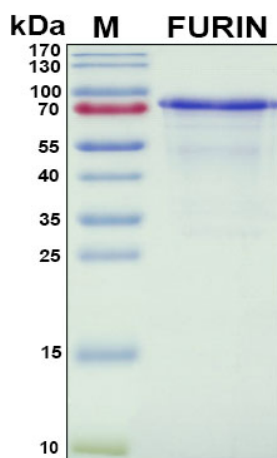
<b>Species</b>	Human
<b>Accession Number</b>	P09958
<b>Gene Symbol</b>	FURIN
<b>Expressed Region</b>	Asp108-Glu715
<b>Synonyms</b>	Furin (Paired Basic Amino Acid Cleaving Enzyme), PCSK3, PACE, FUR, Paired Basic Amino Acid Residue-Cleaving Enzyme, EC 3.4.21.75, Paired Basic Amino Acid Cleaving Enzyme (Furin, Membrane Associated Receptor Protein)

**Preparation**

<b>Expression System</b>	Escherichia coli (E.coli)
<b>Tag</b>	N-terminal His-tag
<b>Purification</b>	His-tag affinity purification by immobilized metal ion affinity chromatography (IMAC)
<b>Purity</b>	>90%
<b>Purity Determined By</b>	SDS-PAGE under reducing conditions and visualized by Coomassie blue staining
<b>Molecular Weight</b>	70

**Protein Specifications**

<b>Format</b>	Liquid
<b>Formulation</b>	Filtered solution in 15 mM Na <sub>2</sub> HPO <sub>4</sub> (pH 7.5), 5 mM NaH <sub>2</sub> PO <sub>4</sub> , 0.5 M NaCl, 40 mM imidazole, 6 M urea.
<b>Concentration</b>	Lot specific (see the label on the vial), determined by Bradford protein assay.

**SDS-PAGE Image**

## Shipping

Ice packs

## Storage/Stability

Upon arrival, the protein may be stored for 2 weeks at 4 °C. For long term storage, it is recommended to store at -20 °C or -80 °C in appropriate aliquots. Avoid repeated freeze-thaw cycles.

This product is furnished for LABORATORY RESEARCH USE ONLY.

Not for diagnostic or therapeutic use.