

---

## Recombinant Human Prolactin Protein, Biotinylated

**Catalog Number:** 230-30003B

**Data Sheet / Certificate of Analysis (CoA)**

Last Revised: 11/26/2024

### Source

---

<b>Species</b>	Human
<b>Accession Number</b>	P01236
<b>Gene Symbols</b>	PRL
<b>Synonyms</b>	Prolactin, PRL
<b>Expressed Region</b>	Leu29-Cys227

### Preparation

---

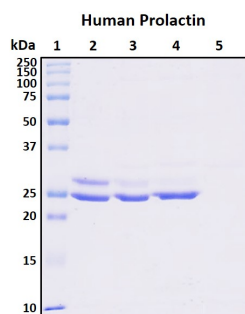
<b>Expression System</b>	HEK293 cells
<b>Tag</b>	N-terminal 8x histidine tag. The primary amino groups (-NH <sub>2</sub> ) at the N-terminus and the side chains of lysine (K) residues were biotin-conjugated using the standard chemical labeling method.
<b>Purity</b>	>95%
<b>Molecular Weight</b>	The predicted size of prolactin is 25 kDa. The affinity purified recombinant human prolactin showed two bands: the major band is about 25 kDa, and the minor band is about 27 kDa. Both bands were confirmed by Western blotting using anti-prolactin antibody. The 27-kDa band may represent N-glycosylated and phosphorylated form.
<b>Endotoxin Level</b>	Not determined

### Specifications

---

<b>Format</b>	Lyophilized powder
<b>Formulation</b>	Lyophilized from a 0.2 µm filtered solution in PBS.
<b>Concentration</b>	Determined by BCA protein assay kit (Thermo Scientific)
<b>Reconstitution</b>	Briefly spin the vial and bring the contents to the bottom prior to opening. It is recommended to reconstitute at 0.5 - 1.0 mg/mL with sterile deionized water or 1x PBS.

## SDS-PAGE Image



## Shipping

The product is shipped with ice packs. Upon arrival, immediately store it at the temperature recommended below.

## Storage/Stability

- Use a manual defrost freezer and avoid repeated freeze-thaw cycles.
- Upon arrival, the lyophilized protein may be stored for 2 weeks at 4°C.
- For long term storage, it is recommended to store desiccated below -20°C in a manual defrost freezer.
- Generally, the shelf life is up to 12 months from date of receipt at -20°C or -80°C under sterile conditions.
- Following reconstitution, the protein may be stored for 2 weeks under sterile conditions at -20°C. For long term storage, it is recommended to make appropriate aliquots at -20°C or -80°C.