

Product Identification

Product Name Recombinant Human CTLA4 Protein, Biotinylated

Catalog Number 230-30054B

Source

Species Human

Accession Number P16410-1

Gene Symbols CD152|CTLA4

Protein Name / Synonyms Cytotoxic T-lymphocyte protein 4 (Cytotoxic T-lymphocyte-associated antigen 4) (CTLA-4) (CD antigen CD152)

Expressed Region Lys36-Asp161

Preparation

Expression System Human Embryonic Kidney 293 Cells

Tag N-terminal histidine tag. The primary amino groups (-NH₂) at the N-terminus and the side chains of lysine (K) residues were biotin-conjugated using the standard chemical labeling method.

Purity >95%

Molecular Weight Recombinant protein has a calculated molecular weight of about 14 kDa. Due to the abundant glycosylation, it migrates as approximately 18-22 kDa protein bands in SDS-PAGE under DTT, beta-mercaptoethanol reducing conditions.

Endotoxin Level Not determined

Specifications

Format Lyophilized powder

Formulation Lyophilized from a 0.2 µm filtered solution in PBS

Concentration (lot specific) Determined by Pierce BCA protein assay kit

Reconstitution Briefly spin the vial and bring the contents to the bottom prior to opening. It is recommended to reconstitute at 0.5 - 1 mg/mL with sterile deionized water.

SDS-PAGE Image

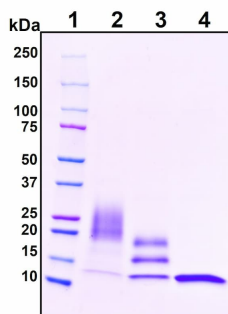


Figure 1. Deglycosylation of purified recombinant proteins. Purified proteins were untreated (**Lane 2**) or treated with protein deglycosylation enzymes under native (**Lane 3**) or reducing (**Lane 4**) conditions. Deglycosylation treatment resulted in a mobility shift of the protein to produce one major band at the expected size, thus indicating that the untreated recombinant protein (**Lane 2**) was glycosylated.

Lane 1: Protein standard ladder (kDa).

Lane 2: Untreated protein under reducing conditions.

Lane 3: Treated protein with deglycosylation enzymes under native conditions.

Lane 4: Treated protein with deglycosylation enzymes under reducing conditions.

Shipping

The product is shipped with ice packs. Upon arrival, immediately store it at the temperature recommended below.

Storage/Stability

- Use a manual defrost freezer and avoid repeated freeze-thaw cycles.
- Upon arrival, the lyophilized protein may be stored for 2 weeks at 4°C.
- For long term storage, it is recommended to store desiccated below -20°C in a manual defrost freezer.
- Generally, the shelf life is up to 12 months from date of receipt at -20°C or -80°C under sterile conditions.
- Following reconstitution, the protein may be stored for 2 weeks under sterile conditions at -20°C. For long term storage, it is recommended to make appropriate aliquots at -20°C or -80°C.

This product is for research use only.

ISO 13485:2016 Certified

3607 Parkway Lane, Suite 100

Peachtree Corners, GA 30092

770-729-2992 | 1-888-494-8555

www.RayBiotech.com | info@raybiotech.com

©2024 RayBiotech Life, Inc.

