

## Recombinant Human Amphiphysin

### Source

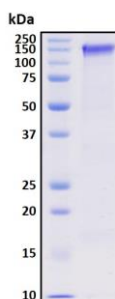
- **Species** Human
- **Gene Symbols** AMPH
- **Accession Number** P49418-1
- **Expressed Region** Ala2-Asp695
- **Synonyms** Amphiphysin, Amphiphysin, Amphiphysin (Stiff-Mann Syndrome with Breast Cancer 128kD Autoantigen), AMPH1, Amphiphysin (Stiff-Man Syndrome with Breast Cancer 128 kDa Autoantigen) phiphysin I.

### Preparation

- **Expression System** Human embryonic kidney 293 (HEK293) cells
- **Tag** N-terminal histidine tag
- **Purification** His-tag affinity purification by immobilized metal ion affinity chromatography (IMAC)
- **Purity** >95%
- **Endotoxin Level** <0.5 EU per µg of the protein as determined by the LAL method
- **Purity determined** By SDS-PAGE under reducing conditions and visualized by Coomassie blue staining
- **Molecular Weight** Recombinant Human Amphiphysin has a calculated molecular mass of 76 kDa. Due to the abundant glycosylation, it migrates as approximately 150 kDa protein bands in SDS-PAGE under DTT, beta-mercaptoethanol reducing conditions.

### Protein Specifications

- **Format** Lyophilized powder
- **Formulation** Lyophilized from a 0.2 µm filtered solution in PBS (pH 7.4)
- **Concentration** Determined by Pierce BCA protein assay
- **SDS-PAGE Image**



### Shipping

The product is shipped with ice packs

### Storage/Stability

Upon arrival, the lyophilized protein may be stored for 2 weeks at 4°C. For long term storage, it is recommended to store desiccated below -20°C in a manual defrost freezer. Following reconstitution, the protein may be stored for 2 weeks under sterile conditions at -20°C. For long term storage, it is recommended to make appropriate aliquots and store at -80°C. Avoid repeated freeze-thaw cycles.

This product is furnished for **LABORATORY RESEARCH USE ONLY**.  
Not for diagnostic or therapeutic use.