

Recombinant Human YWHAB

Source

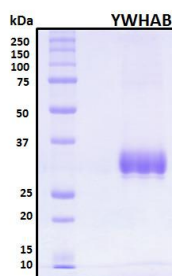
- **Species** Human
- **Gene Symbols** YWHAB
- **Accession Number** P31946-1
- **Expressed Region** Thr2-Asn246
- **Synonyms** YWHAB, 14-3-3 protein beta/alpha, Protein 1054, Protein kinase C inhibitor protein 1, KCIP-1, 14-3-3 Beta1, YWHAA, 14-3-3 Protein Beta/Alpha2, Tyrosine 3-Monooxygenase/Tryptophan 5-Monooxygenase Activation Protein, Alpha Polypeptide, GW1282, Tyrosine 3-Monooxygenase/Tryptophan 5-Monooxygenase Activation Protein, Beta Polypeptide, HEL-S, 14-3-3 Alpha, HS12.

Preparation

- **Expression System** Human embryonic kidney 293 (HEK293) cells
- **Tag** N-terminal histidine tag
- **Purification** His-tag affinity purification by immobilized metal ion affinity chromatography (IMAC)
- **Purity** >95%
- **Endotoxin Level** <0.5 EU per µg of the protein as determined by the LAL method
- **Purity determined** By SDS-PAGE under reducing conditions and visualized by Coomassie blue staining
- **Molecular Weight** 27 kDa

Protein Specifications

- **Format** Lyophilized powder
- **Formulation** Lyophilized from a 0.2 µm filtered solution in PBS (pH 7.4)
- **Concentration** Determined by Pierce BCA protein assay
- **SDS-PAGE Image**



Shipping

The product is shipped with ice packs

Storage/Stability

Upon arrival, the lyophilized protein may be stored for 2 weeks at 4°C. For long term storage, it is recommended to store desiccated below -20°C in a manual defrost freezer. Following reconstitution, the protein may be stored for 2 weeks under sterile conditions at -20°C. For long term storage, it is recommended to make appropriate aliquots and store at -80°C. Avoid repeated freeze-thaw cycles.

This product is furnished for **LABORATORY RESEARCH USE ONLY**.
Not for diagnostic or therapeutic use.