

Recombinant Sus Scrofa IL-6

Source

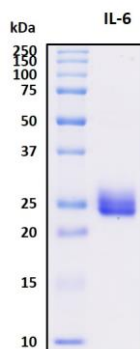
- **Species** Sus scrofa (Pig)
- **Gene Symbols** IL6
- **Accession Number** P26893
- **Expressed Region** Glu30-Met212
- **Synonyms** Interleukin-6, Interleukin 6, B-Cell Stimulatory Factor 2, CTL Differentiation Factor, Hybridoma Growth Factor, Interferon Beta-2, IFN-Beta-2, IFNB2, BSF-2, IL-6, CDF, Interleukin 6 (Interferon, Beta 2), B-Cell Differentiation Factor, Interferon, Beta 2, Interleukin BSF-2, BSF2, HGF, HSF.

Preparation

- **Expression System** Human embryonic kidney 293 (HEK293) cells
- **Tag** N-terminal his-tag
- **Purification** His-tag affinity purification by immobilized metal ion affinity chromatography (IMAC)
- **Purity** >95%
- **Endotoxin Level** <0.5 EU per µg of the protein as determined by the LAL method
- **Purity determined** By SDS-PAGE under reducing conditions and visualized by Coomassie blue staining
- **Molecular Weight** Recombinant protein product has a calculated molecular mass of 20 kDa. Due to the abundant glycosylation, it migrates as approximately 22-30 kDa protein band in SDS-PAGE under DTT, beta-mercaptoethanol reducing conditions.

Protein Specifications

- **Format** Liquid
- **Formulation** Filtered solution in 1x PBS (pH 7.4) with 25% glycerol
- **Concentration** Lot specific (see the label on the vial), determined by BCA protein assay
- **SDS-PAGE Image**



Shipping

The product is shipped with ice packs

Storage/Stability

Upon arrival, the liquid protein may be stored for 2 weeks at 4°C. For long term storage, it is recommended to store at -20°C or -80°C in appropriate aliquots. Avoid repeated freeze-thaw cycles.

This product is furnished for **LABORATORY RESEARCH USE ONLY.**

Not for diagnostic or therapeutic use.