

Synonym

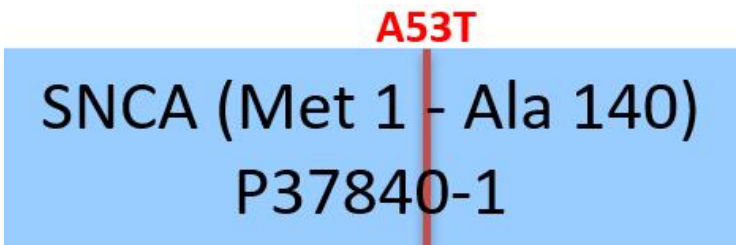
SNCA,NACP,PARK1,alpha-Synuclein

Source

Human Alpha-Synuclein (A53T), Tag Free(ALN-H5116) is expressed from E. coli cells. It contains AA Met 1 - Ala 140 (Accession # [P37840-1](#) (A53T)).

Predicted N-terminus: Met 1

Molecular Characterization



This protein carries no "tag".

The protein has a calculated MW of 14.5 kDa. The protein migrates as 15 kDa when calibrated against [Star Ribbon Pre-stained Protein Marker](#) under reducing (R) condition (SDS-PAGE).

Endotoxin

Less than 0.01 EU per µg by the LAL method / rFC method.

Purity

>95% as determined by SDS-PAGE.

>90% as determined by SEC-MALS.

Formulation

Supplied as 0.2 µm filtered solution in 50 mM HEPES, 100 mM NaCl, pH7.5 with trehalose as protectant.

Contact us for customized product form or formulation.

Shipping

*This product is supplied and shipped with dry ice, please inquire the shipping cost.*

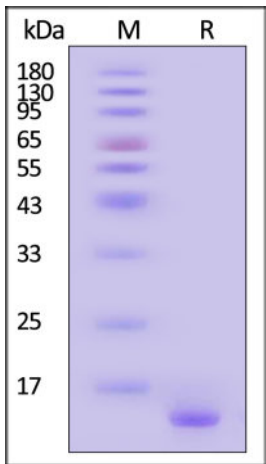
Storage

*Please avoid repeated freeze-thaw cycles.*

This product is stable after storage at:

- The product MUST be stored at -70°C or lower upon receipt;
- -70°C for 3 months under sterile conditions.

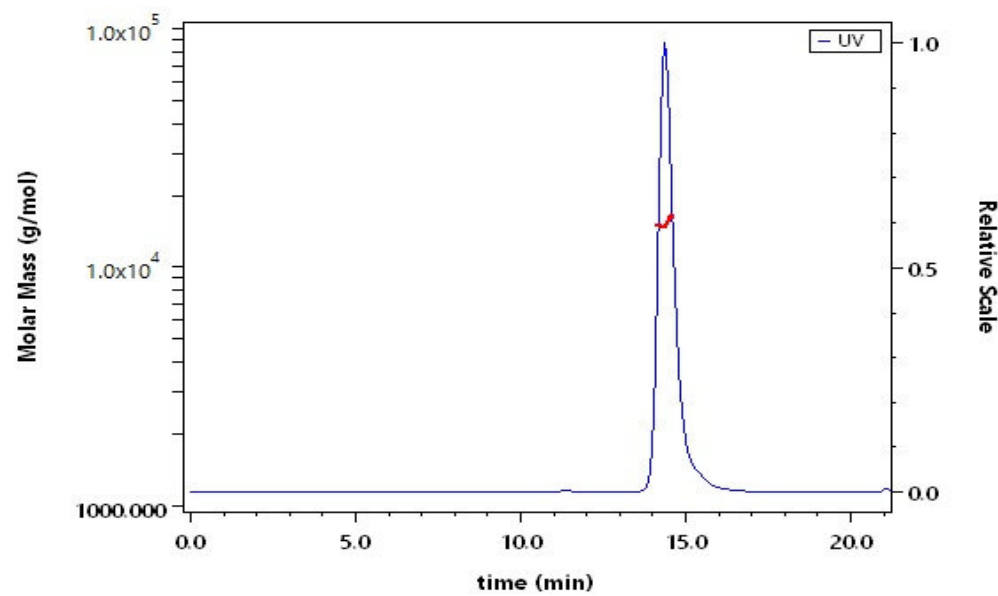
SDS-PAGE



Human Alpha-Synuclein (A53T), Tag Free on SDS-PAGE under reducing (R) condition. The gel was stained with Coomassie Blue. The purity of the protein is greater than 95% (With [Star Ribbon Pre-stained Protein Marker](#)).

Bioactivity-ELISA

SEC-MALS

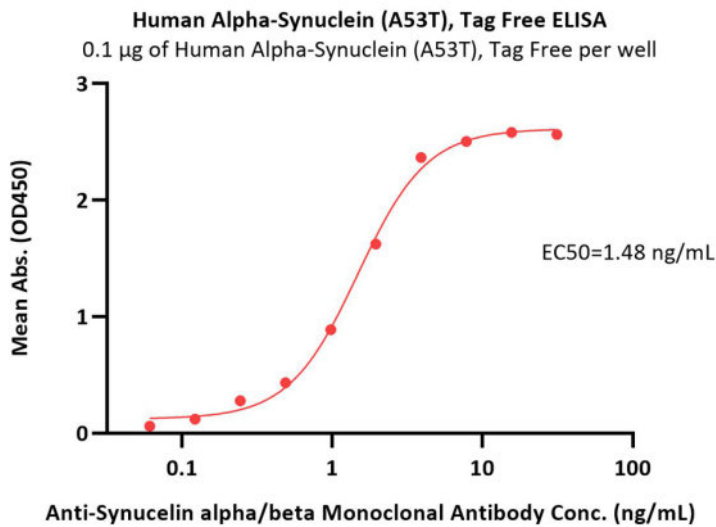


The purity of Human Alpha-Synuclein (A53T), Tag Free (Cat. No. ALN-H5116) is more than 90% and the molecular weight of this protein is around 12-18 kDa verified by SEC-MALS.

[Report](#)

Discounts, Gifts,  
and more!





Immobilized Human Alpha-Synuclein (A53T), Tag Free (Cat. No. ALN-H5116) at 1 µg/mL (100 µL/well) can bind Anti-Synuclein alpha/beta Monoclonal Antibody with a linear range of 0.1-4 ng/mL (QC tested).

Background

Alpha-synuclein is a neuronal protein that plays several roles in synaptic activity such as regulation of synaptic vesicle trafficking and subsequent neurotransmitter release. It acts also as a molecular chaperone in its multimeric membrane-bound state, assisting in the folding of synaptic fusion components called SNAREs (Soluble NSF Attachment Protein REceptors) at presynaptic plasma membrane in conjunction with cysteine string protein-alpha/DNAJC5. Abnormalities in alpha-synuclein are implicated in the pathogenesis of Parkinson's disease (PD). Alpha-synuclein is present in Lewy-bodies, the neuropathological hallmark of PD, and the protein and its aggregation have been widely linked to neurotoxic pathways that ultimately lead to neurodegeneration.

