

Mouse Alpha-Synuclein Protein, His Tag, low endotoxin (MALS verified)

Catalog # ALN-M52H6



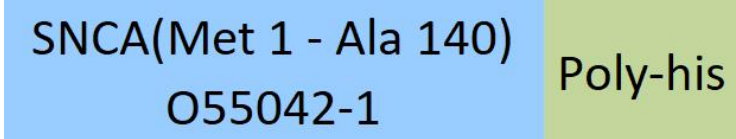
Synonym

SNCA,NACP,PARK1,alpha-Synuclein

Source

Mouse Alpha-Synuclein, His Tag(ALN-M52H6) is expressed from E. coli cells. It contains AA Met 1 - Ala 140 (Accession # [O55042-1](#)). Predicted N-terminus: Met 1

Molecular Characterization



This protein carries a polyhistidine tag at the C-terminus. The protein has a calculated MW of 16.4 kDa. The protein migrates as 19-21 kDa when calibrated against [Star Ribbon Pre-stained Protein Marker](#) under reducing (R) condition (SDS-PAGE).

Endotoxin

Less than 0.01 EU per µg by the LAL method / rFC method.

Purity

>95% as determined by SDS-PAGE.
>90% as determined by SEC-MALS.

Formulation

Supplied as 0.2 µm filtered solution in 100 mM NaAC, pH6.0 with trehalose as protectant.
Contact us for customized product form or formulation.

Shipping

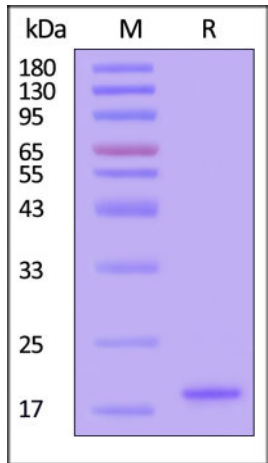
This product is supplied and shipped with dry ice, please inquire the shipping cost.

Storage

Please avoid repeated freeze-thaw cycles.
This product is stable after storage at:

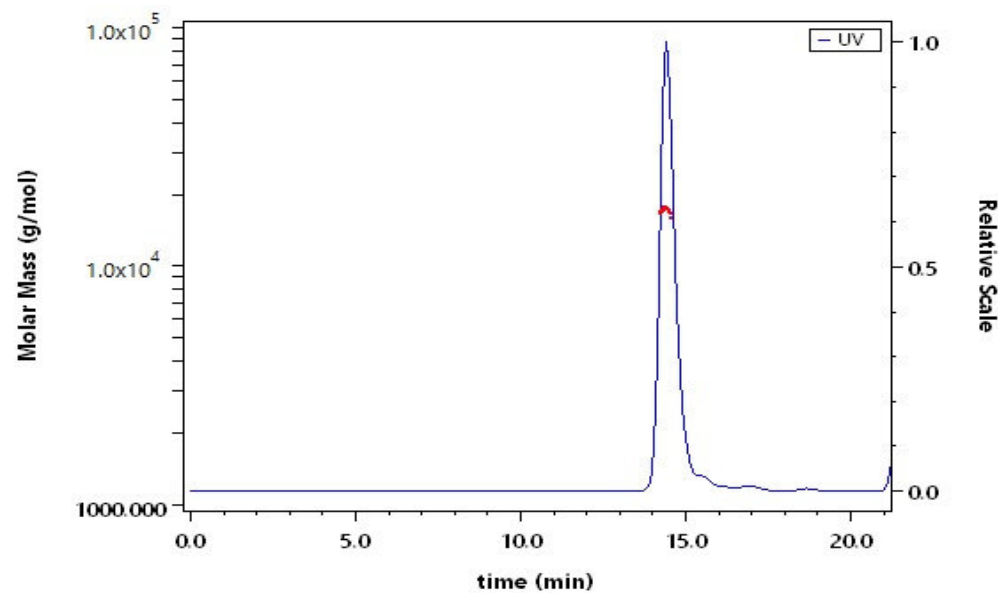
- The product MUST be stored at -70°C or lower upon receipt;
- -70°C for 3 months under sterile conditions.

SDS-PAGE



Mouse Alpha-Synuclein, His Tag on SDS-PAGE under reducing (R) condition. The gel was stained with Coomassie Blue. The purity of the protein is greater than 95% (With [Star Ribbon Pre-stained Protein Marker](#)).

SEC-MALS

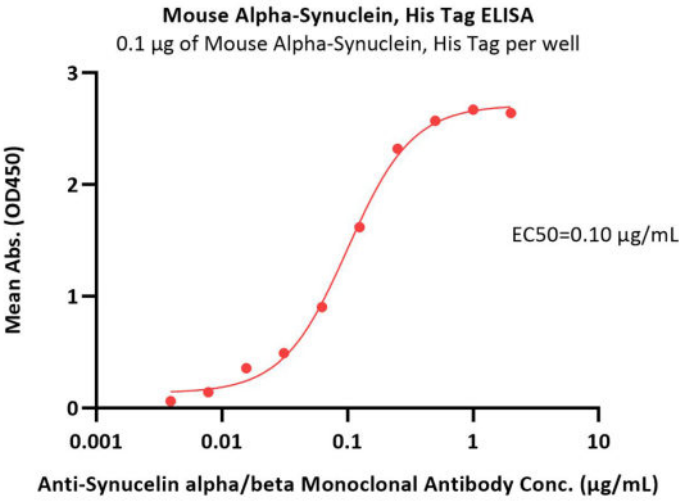


The purity of Mouse Alpha-Synuclein, His Tag (Cat. No. ALN-M52H6) is more than 90% and the molecular weight of this protein is around 15-23 kDa verified by SEC-MALS.

[Report](#)

Bioactivity-ELISA





Immobilized Mouse Alpha-Synuclein, His Tag (Cat. No. ALN-M52H6) at 1 µg/mL (100 µL/well) can bind Anti-Synuclein alpha/beta Monoclonal Antibody with a linear range of 0.004-0.25 µg/mL (QC tested).

Background

Alpha-synuclein is a neuronal protein that plays several roles in synaptic activity such as regulation of synaptic vesicle trafficking and subsequent neurotransmitter release. It acts also as a molecular chaperone in its multimeric membrane-bound state, assisting in the folding of synaptic fusion components called SNAREs (Soluble NSF Attachment Protein REceptors) at presynaptic plasma membrane in conjunction with cysteine string protein-alpha/DNAJC5. Abnormalities in alpha-synuclein are implicated in the pathogenesis of Parkinson's disease (PD). Alpha-synuclein is present in Lewy-bodies, the neuropathological hallmark of PD, and the protein and its aggregation have been widely linked to neurotoxic pathways that ultimately lead to neurodegeneration.

