

Synonym

PLAP

Source

Human ALPP Protein, His Tag(ALP-H52H3) is expressed from human 293 cells (HEK293). It contains AA Ile 23 - Asp 506 (Accession # [P05187-1](#)).
Predicted N-terminus: Ile 23

Molecular Characterization

ALPP(Ile 23 - Asp 506)
P05187-1

Poly-his

This protein carries a polyhistidine tag at the C-terminus.

The protein has a calculated MW of 54.7 kDa. The protein migrates as 64-66 kDa when calibrated against [Star Ribbon Pre-stained Protein Marker](#) under reducing (R) condition (SDS-PAGE) due to glycosylation.

The protein is designed as a dimer.

Endotoxin

Less than 1.0 EU per µg by the LAL method / rFC method.

Purity

>90% as determined by SDS-PAGE.

Formulation

Lyophilized from 0.22 µm filtered solution in 20 mM Tris, 150 mM NaCl, pH7.5 with trehalose as protectant.

Contact us for customized product form or formulation.

Reconstitution

Please see Certificate of Analysis for specific instructions.

For best performance, we strongly recommend you to follow the reconstitution protocol provided in the CoA.

Storage

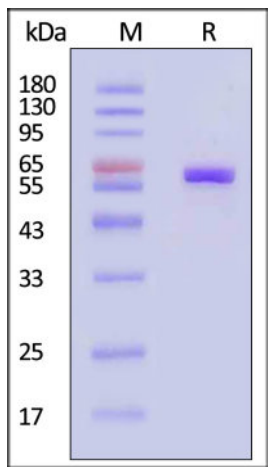
For long term storage, the product should be stored at lyophilized state at -20°C or lower.

Please avoid repeated freeze-thaw cycles.

This product is stable after storage at:

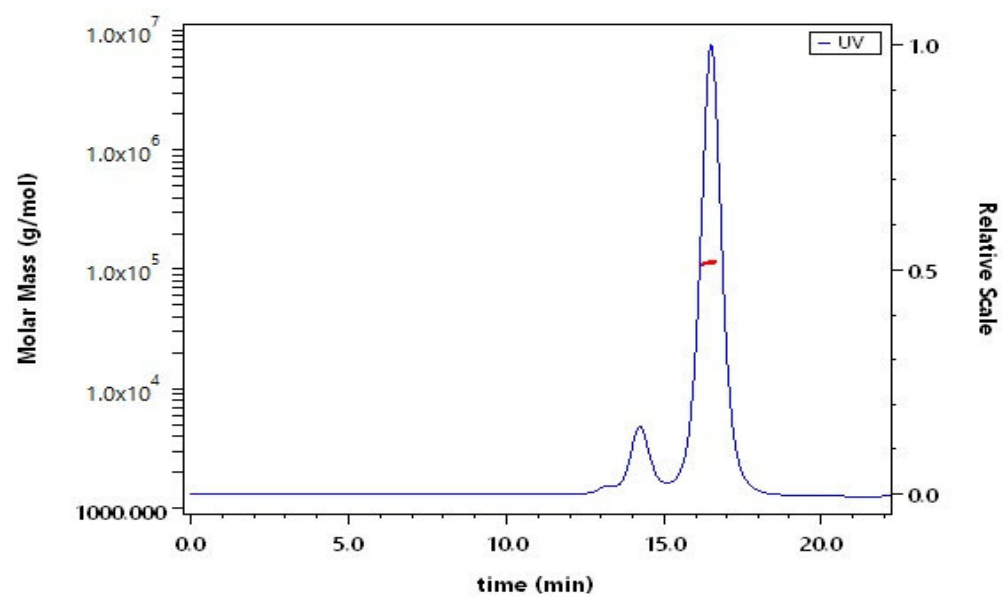
- 20°C to -70°C for 12 months in lyophilized state;
- 70°C for 3 months under sterile conditions after reconstitution.

SDS-PAGE



Human ALPP Protein, His Tag on SDS-PAGE under reducing (R) condition. The gel was stained with Coomassie Blue. The purity of the protein is greater than 90% (With [Star Ribbon Pre-stained Protein Marker](#)).

SEC-MALS



The purity of Human ALPP Protein, His Tag (Cat. No. ALP-H52H3) is more than 85% and the molecular weight of this protein is around 105-135 kDa verified by SEC-MALS.

[Report](#)

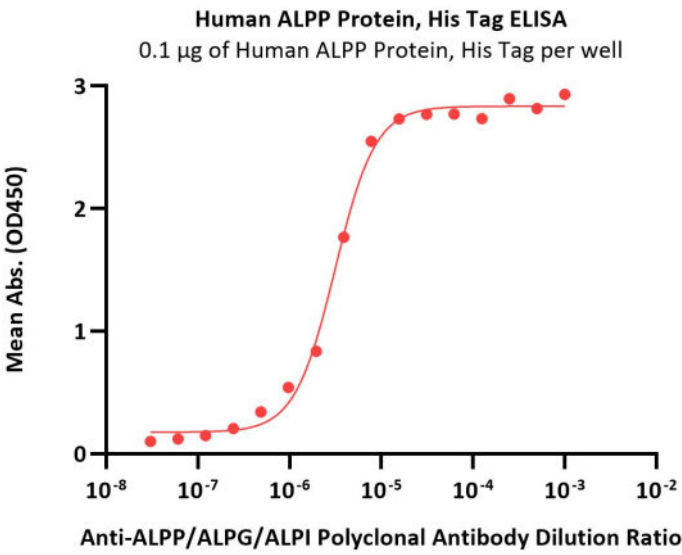
Bioactivity-ELISA

Discounts, Gifts,
and more!



Human ALPP Protein, His Tag (active enzyme, MALS verified)

Catalog # ALP-H52H3



Immobilized Human ALPP Protein, His Tag (Cat. No. ALP-H52H3) at 1 µg/mL (100 µL/well) can bind various dilution ratio of Anti-ALPP/ALPG/ALPI Polyclonal Antibody (QC tested).

Bioactivity

Measured by its ability to cleave a fluorogenic substrate, 4-Methylumbelliferyl phosphate (4-MUP). The specific activity is >7000 pmol/min/µg (QC tested).

Background

ALPP is highly expressed in a variety of solid tumors, including ovarian, endometrial, germ cell, non-small cell lung, bladder and gastric cancers. In normal tissues, it is expressed in the placenta and low in lung and reproductive tissues. ALPP is a membrane protein and exists as a homodimer.

